

CCDC15 Antibody (C-term)
Affinity Purified Rabbit Polyclonal Antibody (Pab)
Catalog # AP11473b**Specification**

CCDC15 Antibody (C-term) - Product Information

Application	WB,E
Primary Accession	Q0P6D6
Other Accession	NP_079280.2
Reactivity	Human
Host	Rabbit
Clonality	Polyclonal
Isotype	Rabbit IgG
Calculated MW	110484
Antigen Region	688-716

CCDC15 Antibody (C-term) - Additional Information**Gene ID** 80071**Other Names**

Coiled-coil domain-containing protein 15, CCDC15

Target/Specificity

This CCDC15 antibody is generated from rabbits immunized with a KLH conjugated synthetic peptide between 688-716 amino acids from the C-terminal region of human CCDC15.

Dilution

WB~~1:1000

E~~Use at an assay dependent concentration.

Format

Purified polyclonal antibody supplied in PBS with 0.09% (W/V) sodium azide. This antibody is purified through a protein A column, followed by peptide affinity purification.

Storage

Maintain refrigerated at 2-8°C for up to 2 weeks. For long term storage store at -20°C in small aliquots to prevent freeze-thaw cycles.

Precautions

CCDC15 Antibody (C-term) is for research use only and not for use in diagnostic or therapeutic procedures.

CCDC15 Antibody (C-term) - Protein Information**Name** CCDC15**Function** Plays an important role in primary cilium assembly, maintenance, and length regulation.

Interacts with centriole inner scaffold proteins to promote proper centriole size and integrity and assembly of functional cilia. Required for the recruitment of both the inner scaffold protein POC1B and the distal SFI1/CETN2 complex to centrioles.

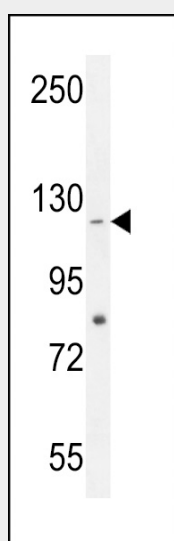
Cellular Location

Cytoplasm, cytoskeleton, microtubule organizing center, centrosome. Cytoplasm, cytoskeleton, microtubule organizing center, centrosome, centriole. Cytoplasm, cytoskeleton, microtubule organizing center, centrosome, centriolar satellite. Note=Localizes to the inner scaffold in the central region of centrioles.

CCDC15 Antibody (C-term) - Protocols

Provided below are standard protocols that you may find useful for product applications.

- [Western Blot](#)
- [Blocking Peptides](#)
- [Dot Blot](#)
- [Immunohistochemistry](#)
- [Immunofluorescence](#)
- [Immunoprecipitation](#)
- [Flow Cytometry](#)
- [Cell Culture](#)

CCDC15 Antibody (C-term) - Images

CCDC15 Antibody (C-term) (Cat. #AP11473b) western blot analysis in HepG2 cell line lysates (35ug/lane). This demonstrates the CCDC15 antibody detected the CCDC15 protein (arrow).

CCDC15 Antibody (C-term) - References

Rose, J.E., et al. Mol. Med. 16 (7-8), 247-253 (2010) :