

HSD11B1L Antibody (C-term)
Affinity Purified Rabbit Polyclonal Antibody (Pab)
Catalog # AP11478B**Specification**

HSD11B1L Antibody (C-term) - Product Information

Application	IF, WB, IHC-P,E
Primary Accession	O7Z5J1
Other Accession	NP_941997.1
Reactivity	Human
Host	Rabbit
Clonality	Polyclonal
Isotype	Rabbit IgG
Calculated MW	34288
Antigen Region	256-283

HSD11B1L Antibody (C-term) - Additional Information**Gene ID** 374875**Other Names**

Hydroxysteroid 11-beta-dehydrogenase 1-like protein, 111-, 11-beta-hydroxysteroid dehydrogenase type 3, 11-DH3, 11-beta-HSD3, Short-chain dehydrogenase/reductase 10, HSD11B1L, HSD3, SCDR10

Target/Specificity

This HSD11B1L antibody is generated from rabbits immunized with a KLH conjugated synthetic peptide between 256-283 amino acids from the C-terminal region of human HSD11B1L.

Dilution

IF~~1:10~50
WB~~1:1000
IHC-P~~1:10~50

Format

Purified polyclonal antibody supplied in PBS with 0.09% (W/V) sodium azide. This antibody is purified through a protein A column, followed by peptide affinity purification.

Storage

Maintain refrigerated at 2-8°C for up to 2 weeks. For long term storage store at -20°C in small aliquots to prevent freeze-thaw cycles.

Precautions

HSD11B1L Antibody (C-term) is for research use only and not for use in diagnostic or therapeutic procedures.

HSD11B1L Antibody (C-term) - Protein Information

Name HSD11B1L

Synonyms HSD3, SCDR10, SDR26C2

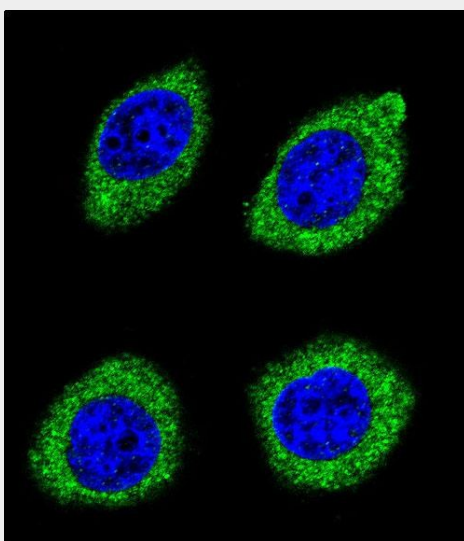
Cellular Location
Secreted.

HSD11B1L Antibody (C-term) - Protocols

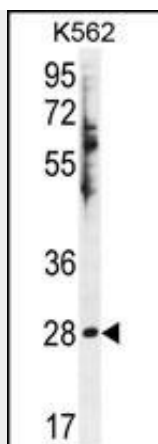
Provided below are standard protocols that you may find useful for product applications.

- [Western Blot](#)
- [Blocking Peptides](#)
- [Dot Blot](#)
- [Immunohistochemistry](#)
- [Immunofluorescence](#)
- [Immunoprecipitation](#)
- [Flow Cytometry](#)
- [Cell Culture](#)

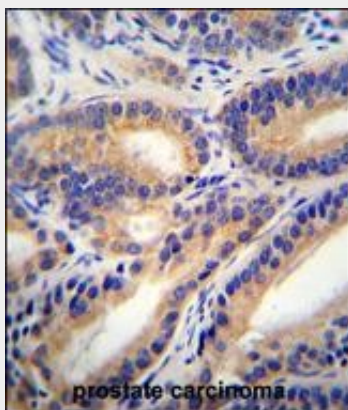
HSD11B1L Antibody (C-term) - Images



Confocal immunofluorescent analysis of HSD11B1L Antibody (C-term)(Cat#AP11478b) with U-251MG cell followed by Alexa Fluor 488-conjugated goat anti-rabbit IgG (green). DAPI was used to stain the cell nuclear (blue).



HSD11B1L Antibody (C-term) (Cat. #AP11478b) western blot analysis in K562 cell line lysates (35ug/lane). This demonstrates the HSD11B1L antibody detected the HSD11B1L protein (arrow).



HSD11B1L Antibody (C-term) (Cat. #AP11478b) immunohistochemistry analysis in formalin fixed and paraffin embedded human prostate carcinoma followed by peroxidase conjugation of the secondary antibody and DAB staining. This data demonstrates the use of HSD11B1L Antibody (C-term) for immunohistochemistry. Clinical relevance has not been evaluated.

HSD11B1L Antibody (C-term) - References

Huang, C., et al. Acta Biochim. Pol. 56(2):279-289(2009)
Kissinger, C.R., et al. J. Mol. Biol. 342(3):943-952(2004)