

SMTNL1 Antibody (Center)
Affinity Purified Rabbit Polyclonal Antibody (Pab)
Catalog # AP11480c

Specification

SMTNL1 Antibody (Center) - Product Information

Application	WB, FC,E
Primary Accession	A8MU46
Reactivity	Human
Host	Rabbit
Clonality	Polyclonal
Isotype	Rabbit IgG
Calculated MW	52987
Antigen Region	130-159

SMTNL1 Antibody (Center) - Additional Information

Gene ID 219537

Other Names

Smoothelin-like protein 1, SMTNL1

Target/Specificity

This SMTNL1 antibody is generated from rabbits immunized with a KLH conjugated synthetic peptide between 130-159 amino acids from the Central region of human SMTNL1.

Dilution

WB~~1:2000

FC~~1:10~50

E~~Use at an assay dependent concentration.

Format

Purified polyclonal antibody supplied in PBS with 0.09% (W/V) sodium azide. This antibody is purified through a protein A column, followed by peptide affinity purification.

Storage

Maintain refrigerated at 2-8°C for up to 2 weeks. For long term storage store at -20°C in small aliquots to prevent freeze-thaw cycles.

Precautions

SMTNL1 Antibody (Center) is for research use only and not for use in diagnostic or therapeutic procedures.

SMTNL1 Antibody (Center) - Protein Information

Name SMTNL1

Function Plays a role in the regulation of contractile properties of both striated and smooth

muscles. When unphosphorylated, may inhibit myosin dephosphorylation. Phosphorylation at Ser-299 reduces this inhibitory activity (By similarity).

Cellular Location

Cytoplasm, myofibril. Cytoplasm, myofibril, sarcomere, I band. Cytoplasm, myofibril, sarcomere, M line Nucleus. Note=Colocalizes with MYH2. In its unphosphorylated state, localizes to the cytoplasm (By similarity) Phosphorylation at Ser-301 promotes translocation to the nucleus (By similarity).

Tissue Location

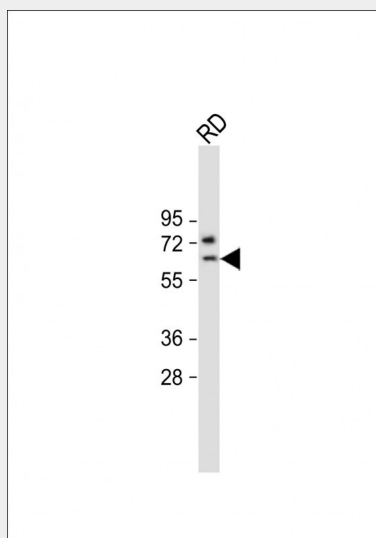
Expressed in striated muscles, specifically in type 2a fibers (at protein level).

SMTNL1 Antibody (Center) - Protocols

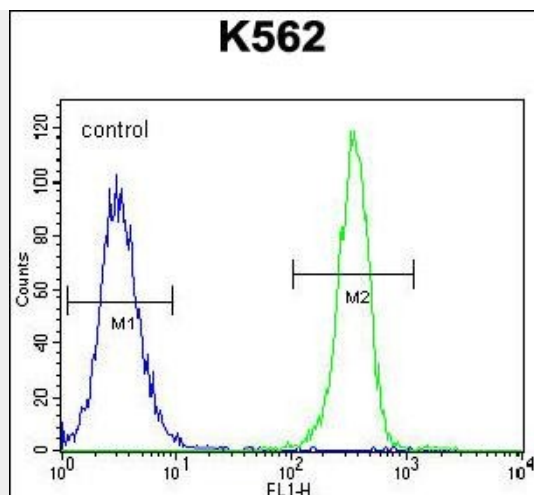
Provided below are standard protocols that you may find useful for product applications.

- [Western Blot](#)
- [Blocking Peptides](#)
- [Dot Blot](#)
- [Immunohistochemistry](#)
- [Immunofluorescence](#)
- [Immunoprecipitation](#)
- [Flow Cytometry](#)
- [Cell Culture](#)

SMTNL1 Antibody (Center) - Images



Anti-SMTNL1 Antibody (Center) at 1:2000 dilution + RD whole cell lysate Lysates/proteins at 20 µg per lane. Secondary Goat Anti-Rabbit IgG, (H+L), Peroxidase conjugated at 1/10000 dilution. Predicted band size :43 kDa Blocking/Dilution buffer: 5% NFDM/TBST.



SMTNL1 Antibody (Center) (Cat. #AP11480c) flow cytometric analysis of K562 cells (right histogram) compared to a negative control cell (left histogram). FITC-conjugated goat-anti-rabbit secondary antibodies were used for the analysis.