

ESSPL Antibody (Center)
Affinity Purified Rabbit Polyclonal Antibody (Pab)
Catalog # AP11489c**Specification**

ESSPL Antibody (Center) - Product Information

Application	WB, FC,E
Primary Accession	Q7RTY5
Other Accession	NP_899231.2
Reactivity	Human
Host	Rabbit
Clonality	Polyclonal
Isotype	Rabbit IgG
Calculated MW	35970
Antigen Region	85-114

ESSPL Antibody (Center) - Additional Information**Gene ID** 345062**Other Names**

Serine protease 48, 3421-, Epidermis-specific serine protease-like protein, PRSS48, ESSPL

Target/Specificity

This ESSPL antibody is generated from rabbits immunized with a KLH conjugated synthetic peptide between 85-114 amino acids from the Central region of human ESSPL.

Dilution

WB~~1:1000

FC~~1:10~50

Format

Purified polyclonal antibody supplied in PBS with 0.09% (W/V) sodium azide. This antibody is purified through a protein A column, followed by peptide affinity purification.

Storage

Maintain refrigerated at 2-8°C for up to 2 weeks. For long term storage store at -20°C in small aliquots to prevent freeze-thaw cycles.

Precautions

ESSPL Antibody (Center) is for research use only and not for use in diagnostic or therapeutic procedures.

ESSPL Antibody (Center) - Protein Information**Name** PRSS48**Synonyms** ESSPL

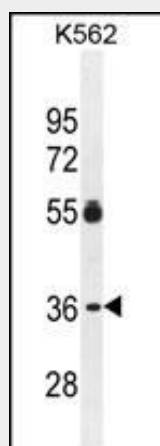
Cellular Location Secreted.

ESSPL Antibody (Center) - Protocols

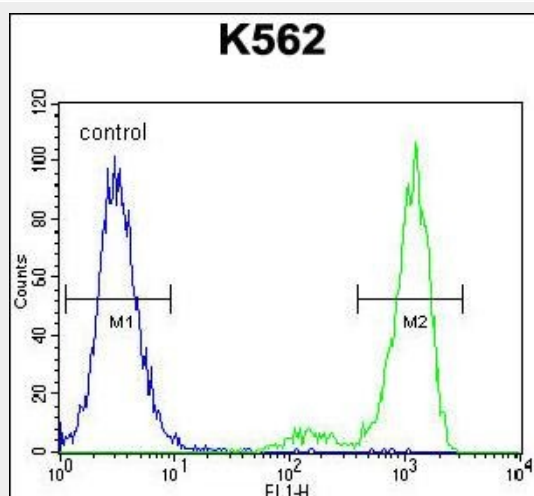
Provided below are standard protocols that you may find useful for product applications.

- [Western Blot](#)
- [Blocking Peptides](#)
- [Dot Blot](#)
- [Immunohistochemistry](#)
- [Immunofluorescence](#)
- [Immunoprecipitation](#)
- [Flow Cytometry](#)
- [Cell Culture](#)

ESSPL Antibody (Center) - Images



ESSPL Antibody (Center) (Cat. #AP11489c) western blot analysis in K562 cell line lysates (35ug/lane). This demonstrates the ESSPL antibody detected the ESSPL protein (arrow).



ESSPL Antibody (Center) (Cat. #AP11489c) flow cytometric analysis of K562 cells (right histogram) compared to a negative control cell (left histogram). FITC-conjugated goat-anti-rabbit secondary antibodies were used for the analysis.

ESSPL Antibody (Center) - Background

ESSPL belongs to the peptidase S1 family, however, the specific function is not yet known. There are three different isoforms.

ESSPL Antibody (Center) - References

Puente, X.S., et al. Nat. Rev. Genet. 4(7):544-558(2003)