

**FOXI3 Antibody (Center)**  
**Affinity Purified Rabbit Polyclonal Antibody (Pab)**  
**Catalog # AP11492c****Specification**

---

**FOXI3 Antibody (Center) - Product Information**

Application	WB, FC,E
Primary Accession	<a href="#">A8MTJ6</a>
Other Accession	<a href="#">NP_001129121.1</a>
Reactivity	Human
Host	Rabbit
Clonality	Polyclonal
Isotype	Rabbit IgG
Calculated MW	43326
Antigen Region	157-186

**FOXI3 Antibody (Center) - Additional Information****Gene ID** 344167**Other Names**

Forkhead box protein I3, FOXI3

**Target/Specificity**

This FOXI3 antibody is generated from rabbits immunized with a KLH conjugated synthetic peptide between 157-186 amino acids from the Central region of human FOXI3.

**Dilution**

WB~~1:1000

FC~~1:10~50

E~~Use at an assay dependent concentration.

**Format**

Purified polyclonal antibody supplied in PBS with 0.09% (W/V) sodium azide. This antibody is purified through a protein A column, followed by peptide affinity purification.

**Storage**

Maintain refrigerated at 2-8°C for up to 2 weeks. For long term storage store at -20°C in small aliquots to prevent freeze-thaw cycles.

**Precautions**

FOXI3 Antibody (Center) is for research use only and not for use in diagnostic or therapeutic procedures.

**FOXI3 Antibody (Center) - Protein Information****Name** FOXI3 {ECO:0000303|PubMed:36260083, ECO:0000312|HGNC:HGNC:35123}

**Function** Transcription factor required for pharyngeal arch development, which is involved in hair, ear, jaw and dental development (PubMed:[37041148](#)). May act as a pioneer transcription factor during pharyngeal arch development (By similarity). Required for epithelial cell differentiation within the epidermis (By similarity). Acts at multiple stages of otic placode induction: necessary for preplacodal ectoderm to execute an inner ear program (By similarity). Required for hair follicle stem cell specification (By similarity). Acts downstream of TBX1 for the formation of the thymus and parathyroid glands from the third pharyngeal pouch (By similarity).

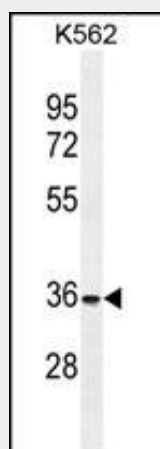
**Cellular Location**

Nucleus.

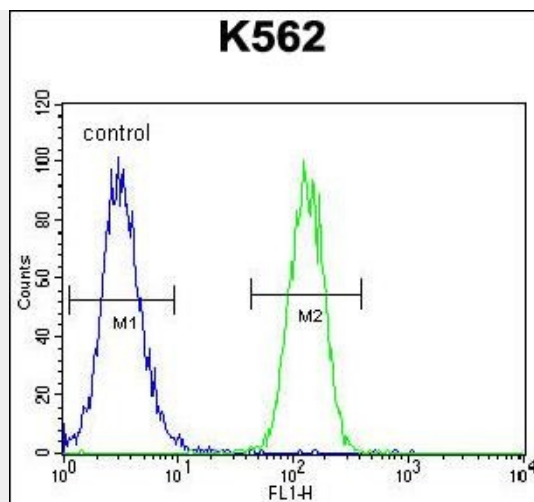
**FOXI3 Antibody (Center) - Protocols**

Provided below are standard protocols that you may find useful for product applications.

- [Western Blot](#)
- [Blocking Peptides](#)
- [Dot Blot](#)
- [Immunohistochemistry](#)
- [Immunofluorescence](#)
- [Immunoprecipitation](#)
- [Flow Cytometry](#)
- [Cell Culture](#)

**FOXI3 Antibody (Center) - Images**

FOXI3 Antibody (Center) (Cat. #AP11492c) western blot analysis in K562 cell line lysates (35ug/lane). This demonstrates the FOXI3 antibody detected the FOXI3 protein (arrow).



FOXI3 Antibody (Center) (Cat. #AP11492c) flow cytometric analysis of K562 cells (right histogram) compared to a negative control cell (left histogram).FITC-conjugated goat-anti-rabbit secondary antibodies were used for the analysis.

#### **FOXI3 Antibody (Center) - Background**

Possible transcriptional factor (By similarity).

#### **FOXI3 Antibody (Center) - References**

Drogemuller, C., et al. Science 321 (5895), 1462 (2008) :  
Hillier, L.W., et al. Nature 434(7034):724-731(2005)