

PRR16 Antibody (C-term)
Affinity Purified Rabbit Polyclonal Antibody (Pab)
Catalog # AP11498b

Specification

PRR16 Antibody (C-term) - Product Information

Application	WB, IHC-P,E
Primary Accession	Q569H4
Other Accession	A3KMN5 , NP_057728.1
Reactivity	Human
Predicted	Mouse
Host	Rabbit
Clonality	Polyclonal
Isotype	Rabbit IgG
Calculated MW	32812
Antigen Region	182-210

PRR16 Antibody (C-term) - Additional Information

Gene ID 51334

Other Names

Protein Largin, Mesenchymal stem cell protein DSC54, Proline-rich protein 16, PRR16

Target/Specificity

This PRR16 antibody is generated from rabbits immunized with a KLH conjugated synthetic peptide between 182-210 amino acids from the C-terminal region of human PRR16.

Dilution

WB~~1:1000

IHC-P~~1:10~50

E~~Use at an assay dependent concentration.

Format

Purified polyclonal antibody supplied in PBS with 0.09% (W/V) sodium azide. This antibody is purified through a protein A column, followed by peptide affinity purification.

Storage

Maintain refrigerated at 2-8°C for up to 2 weeks. For long term storage store at -20°C in small aliquots to prevent freeze-thaw cycles.

Precautions

PRR16 Antibody (C-term) is for research use only and not for use in diagnostic or therapeutic procedures.

PRR16 Antibody (C-term) - Protein Information

Name PRR16

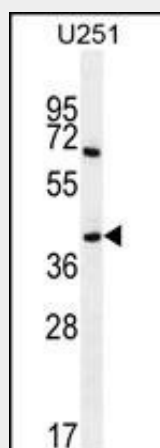
Function Regulator of cell size that promotes cell size increase independently of mTOR and Hippo signaling pathways. Acts by stimulating the translation of specific mRNAs, including those encoding proteins affecting mitochondrial functions. Increases mitochondrial mass and respiration.

PRR16 Antibody (C-term) - Protocols

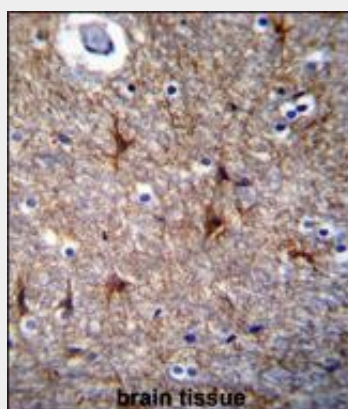
Provided below are standard protocols that you may find useful for product applications.

- [Western Blot](#)
- [Blocking Peptides](#)
- [Dot Blot](#)
- [Immunohistochemistry](#)
- [Immunofluorescence](#)
- [Immunoprecipitation](#)
- [Flow Cytometry](#)
- [Cell Culture](#)

PRR16 Antibody (C-term) - Images



PRR16 Antibody (C-term) (Cat. #AP11498b) western blot analysis in U251 cell line lysates (35ug/lane). This demonstrates the PRR16 antibody detected the PRR16 protein (arrow).



PRR16 Antibody (C-term) (Cat. #AP11498b) immunohistochemistry analysis in formalin fixed and paraffin embedded human brain tissue followed by peroxidase conjugation of the secondary antibody and DAB staining. This data demonstrates the use of PRR16 Antibody (C-term) for immunohistochemistry. Clinical relevance has not been evaluated.

PRR16 Antibody (C-term) - References

Rose, J.E., et al. Mol. Med. 16 (7-8), 247-253 (2010) :
Barberi, T., et al. PLoS Med. 2 (6), E161 (2005) :