

SIGLEC15 Antibody (C-term)
Affinity Purified Rabbit Polyclonal Antibody (Pab)
Catalog # AP11503b

Specification

SIGLEC15 Antibody (C-term) - Product Information

Application	WB, IHC-P,E
Primary Accession	O6ZMC9
Other Accession	NP_998767.1
Reactivity	Human
Host	Rabbit
Clonality	Polyclonal
Isotype	Rabbit IgG
Antigen Region	274-302

SIGLEC15 Antibody (C-term) - Additional Information

Gene ID 284266

Other Names

Sialic acid-binding Ig-like lectin 15, Siglec-15, CD33 antigen-like 3, SIGLEC15, CD33L3

Target/Specificity

This SIGLEC15 antibody is generated from rabbits immunized with a KLH conjugated synthetic peptide between 274-302 amino acids from the C-terminal region of human SIGLEC15.

Dilution

WB~~1:1000
IHC-P~~1:10~50
E~~Use at an assay dependent concentration.

Format

Purified polyclonal antibody supplied in PBS with 0.09% (W/V) sodium azide. This antibody is purified through a protein A column, followed by peptide affinity purification.

Storage

Maintain refrigerated at 2-8°C for up to 2 weeks. For long term storage store at -20°C in small aliquots to prevent freeze-thaw cycles.

Precautions

SIGLEC15 Antibody (C-term) is for research use only and not for use in diagnostic or therapeutic procedures.

SIGLEC15 Antibody (C-term) - Protein Information

Name SIGLEC15

Synonyms CD33L3

Function Binds sialylated glycoproteins.

Cellular Location

Membrane; Single-pass type I membrane protein.

Tissue Location

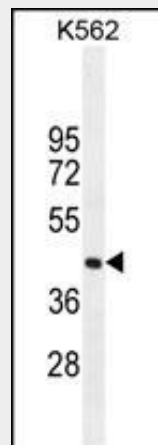
Expressed in macrophage and/or dendritic cells of spleen and lymph nodes

SIGLEC15 Antibody (C-term) - Protocols

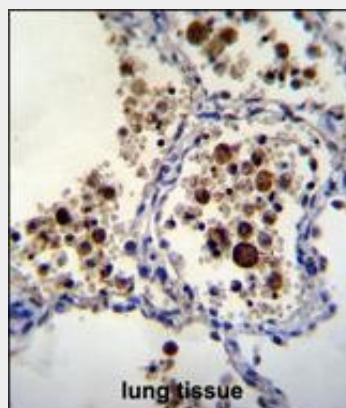
Provided below are standard protocols that you may find useful for product applications.

- [Western Blot](#)
- [Blocking Peptides](#)
- [Dot Blot](#)
- [Immunohistochemistry](#)
- [Immunofluorescence](#)
- [Immunoprecipitation](#)
- [Flow Cytometry](#)
- [Cell Culture](#)

SIGLEC15 Antibody (C-term) - Images



SIGLEC15 Antibody (C-term) (Cat. #AP11503b) western blot analysis in K562 cell line lysates (35ug/lane). This demonstrates the SIGLEC15 antibody detected the SIGLEC15 protein (arrow).



SIGLEC15 Antibody (C-term) (Cat. #AP11503b) immunohistochemistry analysis in formalin fixed

and paraffin embedded human lung tissue followed by peroxidase conjugation of the secondary antibody and DAB staining. This data demonstrates the use of SIGLEC15 Antibody (C-term) for immunohistochemistry. Clinical relevance has not been evaluated.

SIGLEC15 Antibody (C-term) - Background

Binds sialylated glycoproteins.

SIGLEC15 Antibody (C-term) - References

Angata, T., et al. Glycobiology 17(8):838-846(2007)

SIGLEC15 Antibody (C-term) - Citations

- [Siglec-15-induced autophagy promotes invasion and metastasis of human osteosarcoma cells by activating the epithelial-mesenchymal transition and Beclin-1/ATG14 pathway](#)