

**CNIH2 Antibody (N-term)**  
**Affinity Purified Rabbit Polyclonal Antibody (Pab)**  
**Catalog # AP11529A****Specification**

---

**CNIH2 Antibody (N-term) - Product Information**

Application	WB, IHC-P, FC, IF, E
Primary Accession	<a href="#">Q6PI25</a>
Other Accession	<a href="#">Q5BJU5</a> , <a href="#">Q35089</a> , <a href="#">Q401C0</a> , <a href="#">NP_872359.1</a>
Reactivity	Human
Predicted	Chicken, Mouse, Rat
Host	Rabbit
Clonality	Polyclonal
Isotype	Rabbit IgG
Antigen Region	31-59

**CNIH2 Antibody (N-term) - Additional Information****Gene ID** 254263**Other Names**

Protein cornichon homolog 2, CNIH-2, Cornichon family AMPA receptor auxiliary protein 2, Cornichon-like protein, CNIH2, CNIL

**Target/Specificity**

This CNIH2 antibody is generated from rabbits immunized with a KLH conjugated synthetic peptide between 31-59 amino acids from the N-terminal region of human CNIH2.

**Dilution**

WB~~1:1000  
IHC-P~~1:10~50  
FC~~1:10~50  
IF~~1:10~50  
E~~Use at an assay dependent concentration.

**Format**

Purified polyclonal antibody supplied in PBS with 0.09% (W/V) sodium azide. This antibody is purified through a protein A column, followed by peptide affinity purification.

**Storage**

Maintain refrigerated at 2-8°C for up to 2 weeks. For long term storage store at -20°C in small aliquots to prevent freeze-thaw cycles.

**Precautions**

CNIH2 Antibody (N-term) is for research use only and not for use in diagnostic or therapeutic procedures.

**CNIH2 Antibody (N-term) - Protein Information**

**Name** CNIH2 ([HGNC:28744](#))

**Synonyms** CNIL

**Function** Regulates the trafficking and gating properties of AMPA- selective glutamate receptors (AMPA-Rs). Promotes their targeting to the cell membrane and synapses and modulates their gating properties by regulating their rates of activation, deactivation and desensitization. Blocks CACNG8-mediated resensitization of AMPA receptors.

**Cellular Location**

Endoplasmic reticulum membrane; Multi-pass membrane protein. Postsynaptic cell membrane; Multi-pass membrane protein. Cell projection, dendrite. Cell projection, dendritic spine. Postsynaptic density. Note=Also localizes to the cell membrane of extrasynaptic sites (dendritic shafts, spines of pyramidal cells).

**Tissue Location**

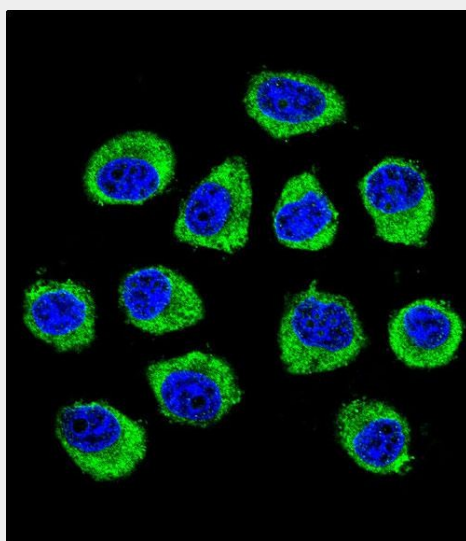
Expression is up-regulated in dorsolateral prefrontal cortex of patients with schizophrenia (postmortem brain study).

**CNIH2 Antibody (N-term) - Protocols**

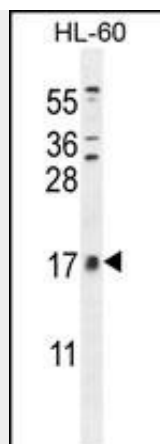
Provided below are standard protocols that you may find useful for product applications.

- [Western Blot](#)
- [Blocking Peptides](#)
- [Dot Blot](#)
- [Immunohistochemistry](#)
- [Immunofluorescence](#)
- [Immunoprecipitation](#)
- [Flow Cytometry](#)
- [Cell Culture](#)

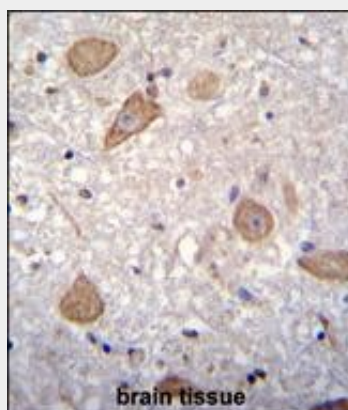
**CNIH2 Antibody (N-term) - Images**



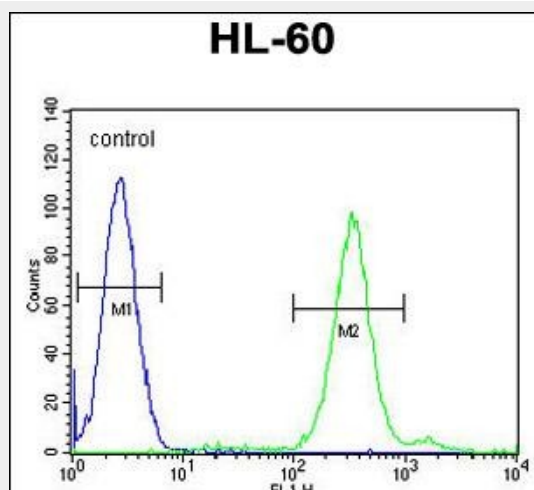
Confocal immunofluorescent analysis of CNIH2 Antibody (N-term)(Cat#AP11529a) with U-251MG cell followed by Alexa Fluor 488-conjugated goat anti-rabbit IgG (green). DAPI was used to stain the cell nuclear (blue).



CNIH2 Antibody (N-term) (Cat. #AP11529a) western blot analysis in HL-60 cell line lysates (35ug/lane). This demonstrates the CNIH2 antibody detected the CNIH2 protein (arrow).



CNIH2 Antibody (N-term) (Cat. #AP11529a) immunohistochemistry analysis in formalin fixed and paraffin embedded human brain tissue followed by peroxidase conjugation of the secondary antibody and DAB staining. This data demonstrates the use of CNIH2 Antibody (N-term) for immunohistochemistry. Clinical relevance has not been evaluated.



CNIH2 Antibody (N-term) (Cat. #AP11529a) flow cytometric analysis of HL-60 cells (right histogram) compared to a negative control cell (left histogram). FITC-conjugated goat-anti-rabbit secondary antibodies were used for the analysis.

#### CNIH2 Antibody (N-term) - Background

Involved in the transport and maturation of proteins (By similarity).

#### **CNIH2 Antibody (N-term) - References**

Hoshino, H., et al. Mol. Biol. Cell 18(4):1143-1152(2007)

Lamesch, P., et al. Genomics 89(3):307-315(2007)