

**RSBN1 Antibody (N-term)**  
**Affinity Purified Rabbit Polyclonal Antibody (Pab)**  
**Catalog # AP11537a****Specification**

---

**RSBN1 Antibody (N-term) - Product Information**

Application	WB, IHC-P, FC,E
Primary Accession	<a href="#">Q5VWQ0</a>
Other Accession	<a href="#">NP_060834.2</a>
Reactivity	Human
Host	Rabbit
Clonality	Polyclonal
Isotype	Rabbit IgG
Calculated MW	90072
Antigen Region	51-78

**RSBN1 Antibody (N-term) - Additional Information****Gene ID** 54665**Other Names**

Round spermatid basic protein 1, RSBN1

**Target/Specificity**

This RSBN1 antibody is generated from rabbits immunized with a KLH conjugated synthetic peptide between 51-78 amino acids from the N-terminal region of human RSBN1.

**Dilution**

WB~~1:2000

IHC-P~~1:25

FC~~1:10~50

E~~Use at an assay dependent concentration.

**Format**

Purified polyclonal antibody supplied in PBS with 0.09% (W/V) sodium azide. This antibody is purified through a protein A column, followed by peptide affinity purification.

**Storage**

Maintain refrigerated at 2-8°C for up to 2 weeks. For long term storage store at -20°C in small aliquots to prevent freeze-thaw cycles.

**Precautions**

RSBN1 Antibody (N-term) is for research use only and not for use in diagnostic or therapeutic procedures.

**RSBN1 Antibody (N-term) - Protein Information****Name** RSBN1

**Function** Histone demethylase that specifically demethylates dimethylated 'Lys-20' of histone H4 (H4K20me2), thereby modulating chromosome architecture.

**Cellular Location**

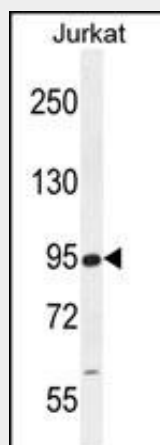
Nucleus.

**RSBN1 Antibody (N-term) - Protocols**

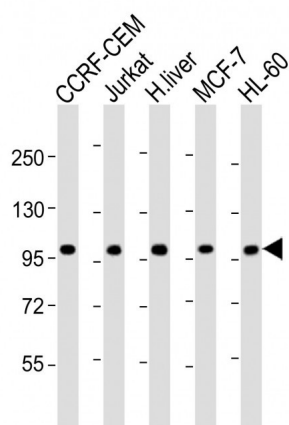
Provided below are standard protocols that you may find useful for product applications.

- [Western Blot](#)
- [Blocking Peptides](#)
- [Dot Blot](#)
- [Immunohistochemistry](#)
- [Immunofluorescence](#)
- [Immunoprecipitation](#)
- [Flow Cytometry](#)
- [Cell Culture](#)

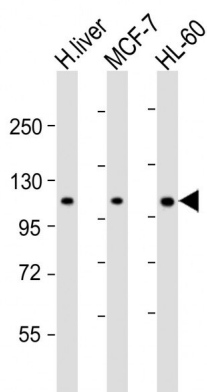
**RSBN1 Antibody (N-term) - Images**



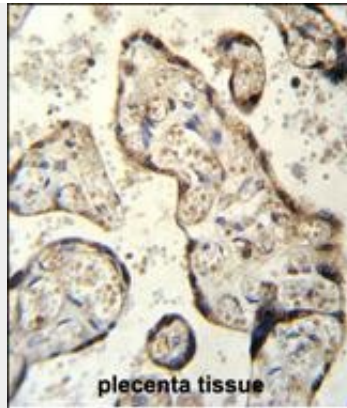
RSBN1 Antibody (N-term) (Cat. #AP11537a) western blot analysis in Jurkat cell line lysates (35ug/lane). This demonstrates the RSN1 antibody detected the RSN1 protein (arrow).



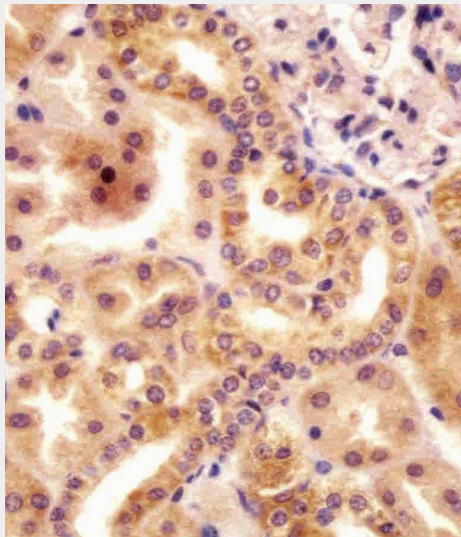
All lanes : Anti-RSBN1 Antibody (N-term) at 1:2000 dilution Lane 1: CCRF-CEM whole cell lysate Lane 2: Jurkat whole cell lysate Lane 3: human liver lysate Lane 4: MCF-7 whole cell lysate Lane 5: HL-60 whole cell lysate Lysates/proteins at 20 µg per lane. Secondary Goat Anti-Rabbit IgG, (H+L), Peroxidase conjugated at 1/10000 dilution. Predicted band size : 90 kDa Blocking/Dilution buffer: 5% NFDM/TBST.



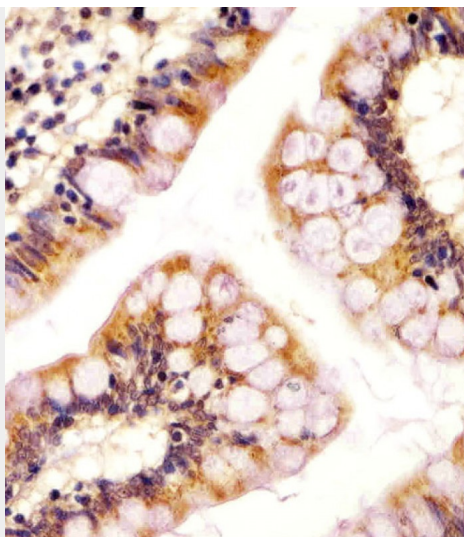
All lanes : Anti-RSBN1 Antibody (N-term) at 1:2000 dilution Lane 1: human liver lysate Lane 2: MCF-7 whole cell lysate Lane 3: HL-60 whole cell lysate Lysates/proteins at 20 µg per lane. Secondary Goat Anti-Rabbit IgG, (H+L), Peroxidase conjugated at 1/10000 dilution. Predicted band size : 90 kDa Blocking/Dilution buffer: 5% NFDM/TBST.



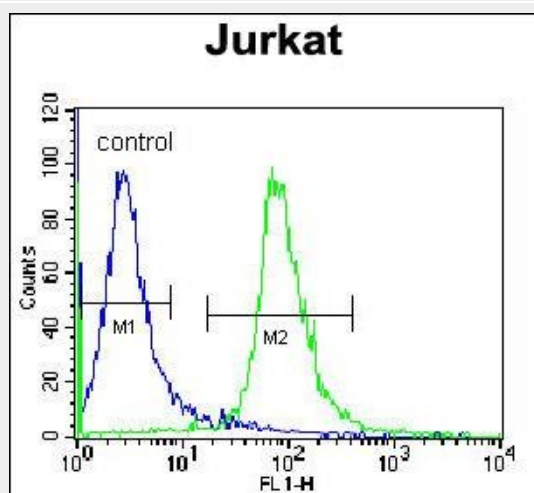
RSBN1 Antibody (N-term) (Cat. #AP11537a) immunohistochemistry analysis in formalin fixed and paraffin embedded human placenta tissue followed by peroxidase conjugation of the secondary antibody and DAB staining. This data demonstrates the use of RSBN1 Antibody (N-term) for immunohistochemistry. Clinical relevance has not been evaluated.



AP11537a staining RSBN1 in human kidney tissue sections by Immunohistochemistry (IHC-P - paraformaldehyde-fixed, paraffin-embedded sections). Tissue was fixed with formaldehyde and blocked with 3% BSA for 0.5 hour at room temperature; antigen retrieval was by heat mediation with a citrate buffer (pH6). Samples were incubated with primary antibody (1/25) for 1 hour at 37°C. A undiluted biotinylated goat polyvalent antibody was used as the secondary antibody.



AP11537a staining RSN1 in human colon tissue sections by Immunohistochemistry (IHC-P - paraformaldehyde-fixed, paraffin-embedded sections). Tissue was fixed with formaldehyde and blocked with 3% BSA for 0.5 hour at room temperature; antigen retrieval was by heat mediation with a citrate buffer (pH6). Samples were incubated with primary antibody (1/25) for 1 hour at 37°C. A undiluted biotinylated goat polyvalent antibody was used as the secondary antibody.



RSBN1 Antibody (N-term) (Cat. #AP11537a) flow cytometric analysis of Jurkat cells (right histogram) compared to a negative control cell (left histogram). FITC-conjugated donkey-anti-rabbit secondary antibodies were used for the analysis.

#### **RSBN1 Antibody (N-term) - References**

- Rose, J. Phd, et al. Mol. Med. (2010) In press :  
Pralhad, S., et al. Arthritis Rheum. 60(7):2124-2130(2009)  
Cooper, J.D., et al. Nat. Genet. 40(12):1399-1401(2008)  
Raychaudhuri, S., et al. Nat. Genet. 40(10):1216-1223(2008)  
Smyth, D.J., et al. Diabetes 57(6):1730-1737(2008)