

SFRP4 Antibody (C-term)
Affinity Purified Rabbit Polyclonal Antibody (Pab)
Catalog # AP11574b**Specification**

SFRP4 Antibody (C-term) - Product Information

Application	WB, FC,E
Primary Accession	Q6FHJ7
Other Accession	NP_003005.2
Reactivity	Human
Host	Rabbit
Clonality	Polyclonal
Isotype	Rabbit IgG
Calculated MW	39827
Antigen Region	318-346

SFRP4 Antibody (C-term) - Additional Information**Gene ID** 6424**Other Names**

Secreted frizzled-related protein 4, sFRP-4, Frizzled protein, human endometrium, FrpHE, SFRP4, FRPHE

Target/Specificity

This SFRP4 antibody is generated from rabbits immunized with a KLH conjugated synthetic peptide between 318-346 amino acids from the C-terminal region of human SFRP4.

Dilution

WB~~1:1000

FC~~1:10~50

E~~Use at an assay dependent concentration.

Format

Purified polyclonal antibody supplied in PBS with 0.09% (W/V) sodium azide. This antibody is purified through a protein A column, followed by peptide affinity purification.

Storage

Maintain refrigerated at 2-8°C for up to 2 weeks. For long term storage store at -20°C in small aliquots to prevent freeze-thaw cycles.

Precautions

SFRP4 Antibody (C-term) is for research use only and not for use in diagnostic or therapeutic procedures.

SFRP4 Antibody (C-term) - Protein Information**Name** SFRP4

Synonyms FRPHE

Function Soluble frizzled-related proteins (sFRPS) function as modulators of Wnt signaling through direct interaction with Wnts. They have a role in regulating cell growth and differentiation in specific cell types (By similarity). SFRP4 plays a role in bone morphogenesis. May also act as a regulator of adult uterine morphology and function. May also increase apoptosis during ovulation possibly through modulation of FZ1/FZ4/WNT4 signaling (By similarity). Has phosphaturic effects by specifically inhibiting sodium-dependent phosphate uptake (PubMed:[12952927](#)).

Cellular Location

Secreted. Note=Cytoplasmic in ovarian tumor cells

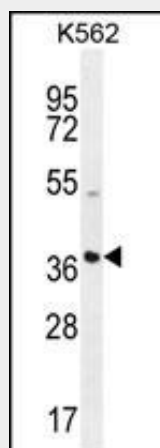
Tissue Location

Expressed in mesenchymal cells. Highly expressed in the stroma of proliferative endometrium. Expressed in cardiomyocytes Shows moderate to strong expression in ovarian tumors with expression increasing as the tumor stage increases. In ovarian tumors, expression levels are inversely correlated with expression of CTNNB1 (at protein level).

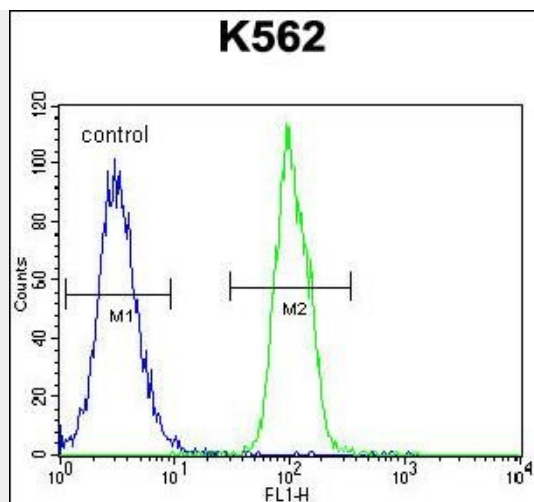
SFRP4 Antibody (C-term) - Protocols

Provided below are standard protocols that you may find useful for product applications.

- [Western Blot](#)
- [Blocking Peptides](#)
- [Dot Blot](#)
- [Immunohistochemistry](#)
- [Immunofluorescence](#)
- [Immunoprecipitation](#)
- [Flow Cytometry](#)
- [Cell Culture](#)

SFRP4 Antibody (C-term) - Images

SFRP4 Antibody (C-term) (Cat. #AP11574b) western blot analysis in K562 cell line lysates (35ug/lane). This demonstrates the SFRP4 antibody detected the SFRP4 protein (arrow).



SFRP4 Antibody (C-term) (Cat. #AP11574b) flow cytometric analysis of K562 cells (right histogram) compared to a negative control cell (left histogram). FITC-conjugated goat-anti-rabbit secondary antibodies were used for the analysis.

SFRP4 Antibody (C-term) - Background

Secreted frizzled-related protein 4 (SFRP4) is a member of the SFRP family that contains a cysteine-rich domain homologous to the putative Wnt-binding site of Frizzled proteins. SFRPs act as soluble modulators of Wnt signaling. The expression of SFRP4 in ventricular myocardium correlates with apoptosis related gene expression.

SFRP4 Antibody (C-term) - References

- Lee, D.Y., et al. Menopause 17(5):1064-1070(2010)
- Kohno, H., et al. Oncol. Rep. 24(2):423-431(2010)
- Frank, B., et al. Carcinogenesis 31(8):1381-1386(2010)
- Huang, D., et al. J. Cancer Res. Clin. Oncol. 136(3):395-401(2010)
- Hirata, H., et al. Cancer 115(19):4488-4503(2009)