

**SMYD4 Antibody (C-term)**  
**Affinity Purified Rabbit Polyclonal Antibody (Pab)**  
**Catalog # AP11581B**

**Specification**

---

**SMYD4 Antibody (C-term) - Product Information**

Application	WB, IHC-P, FC,E
Primary Accession	<a href="#">Q8IYR2</a>
Other Accession	<a href="#">NP_443160.2</a>
Reactivity	Human
Host	Rabbit
Clonality	Polyclonal
Isotype	Rabbit IgG
Calculated MW	89225
Antigen Region	541-568

**SMYD4 Antibody (C-term) - Additional Information**

**Gene ID** 114826

**Other Names**

SET and MYND domain-containing protein 4, 211-, SMYD4, KIAA1936

**Target/Specificity**

This SMYD4 antibody is generated from rabbits immunized with a KLH conjugated synthetic peptide between 541-568 amino acids from the C-terminal region of human SMYD4.

**Dilution**

WB~~1:1000

IHC-P~~1:50~100

FC~~1:10~50

E~~Use at an assay dependent concentration.

**Format**

Purified polyclonal antibody supplied in PBS with 0.09% (W/V) sodium azide. This antibody is purified through a protein A column, followed by peptide affinity purification.

**Storage**

Maintain refrigerated at 2-8°C for up to 2 weeks. For long term storage store at -20°C in small aliquots to prevent freeze-thaw cycles.

**Precautions**

SMYD4 Antibody (C-term) is for research use only and not for use in diagnostic or therapeutic procedures.

**SMYD4 Antibody (C-term) - Protein Information**

**Name** SMYD4 ([HGNC:21067](#))

**Synonyms** KIAA1936

**Function** Protein-lysine N-methyltransferase. Monomethylates PRMT5, modulating its transcriptional activity (PubMed:[38438251](#)). May also act as a histone methyltransferase (By similarity). Plays a critical role in cardiac development. Acts as a key epigenetic regulator of gene expression during cardiac development via its dual activities as a methyltransferase and negative regulator of HDAC1 (By similarity).

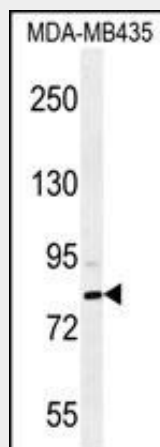
**Cellular Location**

Nucleus. Cytoplasm

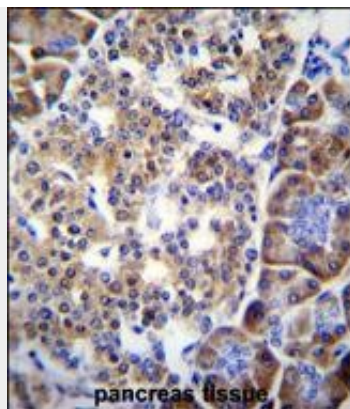
**SMYD4 Antibody (C-term) - Protocols**

Provided below are standard protocols that you may find useful for product applications.

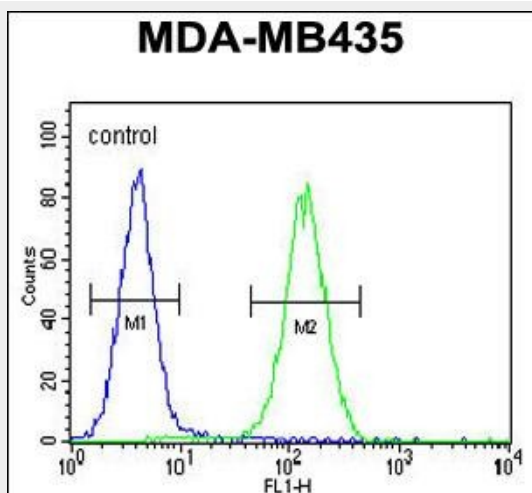
- [Western Blot](#)
- [Blocking Peptides](#)
- [Dot Blot](#)
- [Immunohistochemistry](#)
- [Immunofluorescence](#)
- [Immunoprecipitation](#)
- [Flow Cytometry](#)
- [Cell Culture](#)

**SMYD4 Antibody (C-term) - Images**

SMYD4 Antibody (C-term) (Cat. #AP11581b) western blot analysis in MDA-MB435 cell line lysates (35ug/lane). This demonstrates the SMYD4 antibody detected the SMYD4 protein (arrow).



SMYD4 Antibody (C-term) (Cat. #AP11581b) immunohistochemistry analysis in formalin fixed and paraffin embedded human pancreas tissue followed by peroxidase conjugation of the secondary antibody and DAB staining. This data demonstrates the use of SMYD4 Antibody (C-term) for immunohistochemistry. Clinical relevance has not been evaluated.



SMYD4 Antibody (C-term) (Cat. #AP11581b) flow cytometric analysis of MDA-MB435 cells (right histogram) compared to a negative control cell (left histogram). FITC-conjugated goat-anti-rabbit secondary antibodies were used for the analysis.

#### **SMYD4 Antibody (C-term) - Background**

The specific function of the protein remains unknown.

#### **SMYD4 Antibody (C-term) - References**

O'Seaghdha, C.M., et al. Hum. Mol. Genet. 19(21):4296-4303(2010)  
Rose, J.E., et al. Mol. Med. 16 (7-8), 247-253 (2010) :  
Hu, L., et al. Cancer Res. 69(9):4067-4072(2009)