

CLEC12B Antibody (C-term)
Affinity Purified Rabbit Polyclonal Antibody (Pab)
Catalog # AP11585b

Specification

CLEC12B Antibody (C-term) - Product Information

Application	WB, IHC-P,E
Primary Accession	Q2HXU8
Other Accession	NP_001123470.1 , NP_995324.2
Reactivity	Human
Host	Rabbit
Clonality	Polyclonal
Isotype	Rabbit IgG
Antigen Region	249-276

CLEC12B Antibody (C-term) - Additional Information

Gene ID 387837

Other Names

C-type lectin domain family 12 member B, Macrophage antigen H, CLEC12B

Target/Specificity

This CLEC12B antibody is generated from rabbits immunized with a KLH conjugated synthetic peptide between 249-276 amino acids from the C-terminal region of human CLEC12B.

Dilution

WB~~1:1000-1:2000

IHC-P~~1:50~100

E~~Use at an assay dependent concentration.

Format

Purified polyclonal antibody supplied in PBS with 0.09% (W/V) sodium azide. This antibody is purified through a protein A column, followed by peptide affinity purification.

Storage

Maintain refrigerated at 2-8°C for up to 2 weeks. For long term storage store at -20°C in small aliquots to prevent freeze-thaw cycles.

Precautions

CLEC12B Antibody (C-term) is for research use only and not for use in diagnostic or therapeutic procedures.

CLEC12B Antibody (C-term) - Protein Information

Name CLEC12B {ECO:0000303|PubMed:34310951, ECO:0000312|HGNC:HGNC:31966}

Function Inhibitory receptor postulated to negatively regulate immune and non-immune functions

(PubMed:[17562706](#), PubMed:[34310951](#)). Upon phosphorylation, recruits SH2 domain-containing PTPN6 and PTPN11 phosphatases to its ITIM motif and antagonizes activation signals (PubMed:[17562706](#), PubMed:[34310951](#)). Although it inhibits KLRK1/NKG2D- mediated signaling, it does not bind known ligands of KLRK1/NKG2D and therefore is not its inhibitory counterpart (PubMed:[17562706](#)). May limit activation of myeloid cell subsets in response to infection or tissue inflammation (PubMed:[17562706](#)). May protect target cells against natural killer cell-mediated lysis (PubMed:[17562706](#)). May negatively regulate cell cycle and differentiation of melanocytes via inactivation of STAT3 (PubMed:[34310951](#)).

Cellular Location

Cell membrane; Single-pass type II membrane protein

Tissue Location

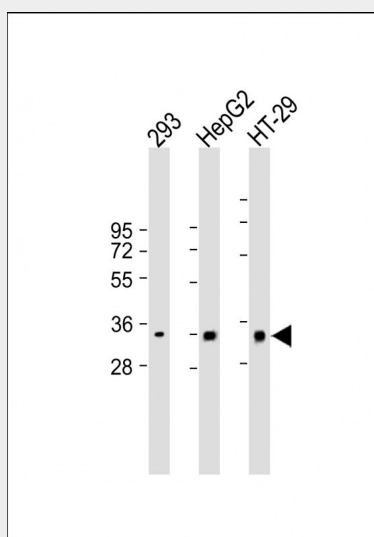
Detected in colon, heart, kidney, liver, lung, mammary gland, ovary, spleen and testis (PubMed:[17562706](#)). Expressed in melanocytes (at protein level) (PubMed:[34310951](#))

CLEC12B Antibody (C-term) - Protocols

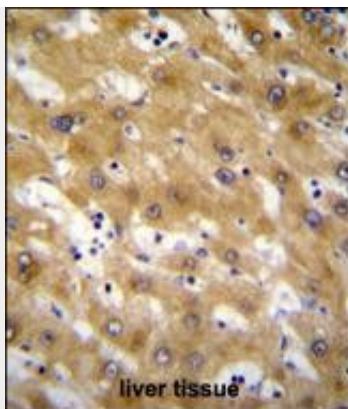
Provided below are standard protocols that you may find useful for product applications.

- [Western Blot](#)
- [Blocking Peptides](#)
- [Dot Blot](#)
- [Immunohistochemistry](#)
- [Immunofluorescence](#)
- [Immunoprecipitation](#)
- [Flow Cytometry](#)
- [Cell Culture](#)

CLEC12B Antibody (C-term) - Images



All lanes : Anti-CLEC12B Antibody (C-term) at 1:1000-1:2000 dilution Lane 1: 293 whole cell lysate Lane 2: HepG2 whole cell lysate Lane 3: HT-29 whole cell lysate Lysates/proteins at 20 µg per lane. Secondary Goat Anti-Rabbit IgG, (H+L), Peroxidase conjugated at 1/10000 dilution. Predicted band size : 32 kDa Blocking/Dilution buffer: 5% NFDM/TBST.



CLEC12B Antibody (C-term) (Cat. #AP11585b) immunohistochemistry analysis in formalin fixed and paraffin embedded human liver tissue followed by peroxidase conjugation of the secondary antibody and DAB staining. This data demonstrates the use of CLEC12B Antibody (C-term) for immunohistochemistry. Clinical relevance has not been evaluated.

CLEC12B Antibody (C-term) - Background

Cell surface receptor that protects target cells against natural killer cell-mediated lysis. Modulates signaling cascades and mediates tyrosine phosphorylation of target MAP kinases.

CLEC12B Antibody (C-term) - References

Hoffmann, S.C., et al. J. Biol. Chem. 282(31):22370-22375(2007)

Clark, H.F., et al. Genome Res. 13(10):2265-2270(2003)