

CCDC61 Antibody (N-term)
Affinity Purified Rabbit Polyclonal Antibody (Pab)
Catalog # AP11587a**Specification**

CCDC61 Antibody (N-term) - Product Information

Application	WB, FC,E
Primary Accession	O9Y6R9
Reactivity	Human
Host	Rabbit
Clonality	Polyclonal
Isotype	Rabbit IgG
Calculated MW	57368
Antigen Region	36-65

CCDC61 Antibody (N-term) - Additional Information**Gene ID** 729440**Other Names**

Coiled-coil domain-containing protein 61, CCDC61

Target/Specificity

This CCDC61 antibody is generated from rabbits immunized with a KLH conjugated synthetic peptide between 36-65 amino acids from the N-terminal region of human CCDC61.

Dilution

WB~~1:1000

FC~~1:10~50

E~~Use at an assay dependent concentration.

Format

Purified polyclonal antibody supplied in PBS with 0.09% (W/V) sodium azide. This antibody is purified through a protein A column, followed by peptide affinity purification.

Storage

Maintain refrigerated at 2-8°C for up to 2 weeks. For long term storage store at -20°C in small aliquots to prevent freeze-thaw cycles.

Precautions

CCDC61 Antibody (N-term) is for research use only and not for use in diagnostic or therapeutic procedures.

CCDC61 Antibody (N-term) - Protein Information**Name** CCDC61 ([HGNC:33629](#))**Function** Microtubule-binding centrosomal protein required for centriole cohesion, independently

of the centrosome-associated protein/CEP250 and rootletin/CROCC linker (PubMed:[31789463](#)). In interphase, required for anchoring microtubule at the mother centriole subdistal appendages and for centrosome positioning (PubMed:[31789463](#)). During mitosis, may be involved in spindle assembly and chromatin alignment by regulating the organization of spindle microtubules into a symmetrical structure (PubMed:[30354798](#)). Has been proposed to play a role in CEP170 recruitment to centrosomes (PubMed:[30354798](#)). However, this function could not be confirmed (PubMed:[31789463](#)). Plays a non-essential role in ciliogenesis (PubMed:[31789463](#), PubMed:[32375023](#)).

Cellular Location

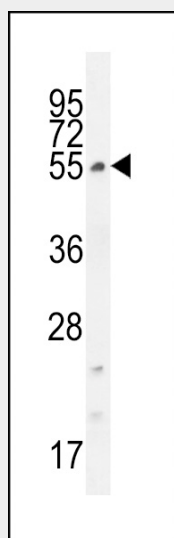
Cytoplasm, cytoskeleton, microtubule organizing center, centrosome. Cytoplasm, cytoskeleton, microtubule organizing center, centrosome, centriolar satellite. Cytoplasm, cytoskeleton, cilium basal body Note=Localization at the centriolar satellite is dependent on intact microtubule network (PubMed:30354798). Localizes at the centriole subdistal appendages and proximal ends (PubMed:31789463). Localized to centrosomal/satellite-like structures with the onset of centrosome separation in early G2 (PubMed:30354798).

CCDC61 Antibody (N-term) - Protocols

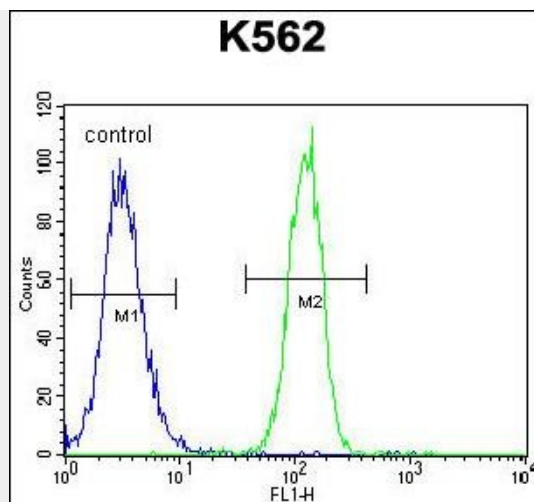
Provided below are standard protocols that you may find useful for product applications.

- [Western Blot](#)
- [Blocking Peptides](#)
- [Dot Blot](#)
- [Immunohistochemistry](#)
- [Immunofluorescence](#)
- [Immunoprecipitation](#)
- [Flow Cytometry](#)
- [Cell Culture](#)

CCDC61 Antibody (N-term) - Images



CCDC61 Antibody (N-term) (Cat. #AP11587a) western blot analysis in K562 cell line lysates (35ug/lane). This demonstrates the CCDC61 antibody detected the CCDC61 protein (arrow).



CCDC61 Antibody (N-term) (Cat. #AP11587a) flow cytometric analysis of K562 cells (right histogram) compared to a negative control cell (left histogram). FITC-conjugated goat-anti-rabbit secondary antibodies were used for the analysis.

CCDC61 Antibody (N-term) - Background

The specific function of the protein remains unknown.