

**ZBTB42 Antibody (N-term)**  
**Affinity Purified Rabbit Polyclonal Antibody (Pab)**  
**Catalog # AP11594a****Specification**

---

**ZBTB42 Antibody (N-term) - Product Information**

Application	WB, IHC-P,E
Primary Accession	<a href="#">B2RXF5</a>
Other Accession	<a href="#">NP_001131073.1</a>
Reactivity	Mouse
Host	Rabbit
Clonality	Polyclonal
Isotype	Rabbit IgG
Calculated MW	46491
Antigen Region	37-65

**ZBTB42 Antibody (N-term) - Additional Information****Gene ID** 100128927**Other Names**

Zinc finger and BTB domain-containing protein 42, ZBTB42

**Target/Specificity**

This ZBTB42 antibody is generated from rabbits immunized with a KLH conjugated synthetic peptide between 37-65 amino acids from the N-terminal region of human ZBTB42.

**Dilution**

WB~~1:1000

IHC-P~~1:50~100

E~~Use at an assay dependent concentration.

**Format**

Purified polyclonal antibody supplied in PBS with 0.09% (W/V) sodium azide. This antibody is purified through a protein A column, followed by peptide affinity purification.

**Storage**

Maintain refrigerated at 2-8°C for up to 2 weeks. For long term storage store at -20°C in small aliquots to prevent freeze-thaw cycles.

**Precautions**

ZBTB42 Antibody (N-term) is for research use only and not for use in diagnostic or therapeutic procedures.

**ZBTB42 Antibody (N-term) - Protein Information****Name** ZBTB42

**Function** Transcriptional repressor. Specifically binds DNA and probably acts by recruiting chromatin remodeling multiprotein complexes.

**Cellular Location**

Cytoplasm {ECO:0000250|UniProtKB:Q811H0}. Nucleus. Nucleus, nucleoplasm {ECO:0000250|UniProtKB:Q811H0}. Note=In skeletal myofibers, highly enriched in subsynaptic nuclei at the neuromuscular junctions {ECO:0000250|UniProtKB:Q811H0}

**Tissue Location**

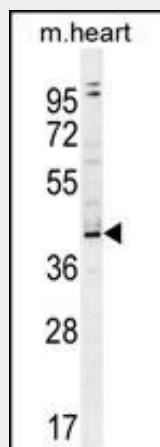
Expressed in skeletal muscle (at protein level).

**ZBTB42 Antibody (N-term) - Protocols**

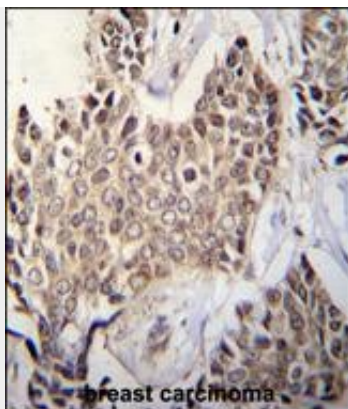
Provided below are standard protocols that you may find useful for product applications.

- [Western Blot](#)
- [Blocking Peptides](#)
- [Dot Blot](#)
- [Immunohistochemistry](#)
- [Immunofluorescence](#)
- [Immunoprecipitation](#)
- [Flow Cytometry](#)
- [Cell Culture](#)

**ZBTB42 Antibody (N-term) - Images**



ZBTB42 Antibody (N-term) (Cat. #AP11594a) western blot analysis in mouse heart tissue lysates (35ug/lane). This demonstrates the ZBTB42 antibody detected the ZBTB42 protein (arrow).



ZBTB42 Antibody (N-term) (Cat. #AP11594a) immunohistochemistry analysis in formalin fixed and paraffin embedded human breast tissue followed by peroxidase conjugation of the secondary antibody and DAB staining. This data demonstrates the use of ZBTB42 Antibody (N-term) for immunohistochemistry. Clinical relevance has not been evaluated.

#### **ZBTB42 Antibody (N-term) - Background**

Transcriptional repressor. Specifically binds DNA and probably acts by recruiting chromatin remodeling multiprotein complexes (By similarity).

#### **ZBTB42 Antibody (N-term) - References**

Bailey, S.D., et al. Diabetes Care (2010) In press :  
Talmud, P.J., et al. Am. J. Hum. Genet. 85(5):628-642(2009)