

**ARL17P1 Antibody (Center)**  
**Affinity Purified Rabbit Polyclonal Antibody (Pab)**  
**Catalog # AP11597c****Specification**

---

**ARL17P1 Antibody (Center) - Product Information**

Application	WB, IHC-P, FC,E
Primary Accession	<a href="#">Q8IVW1</a>
Other Accession	<a href="#">NP_001096624.1</a> , <a href="#">NP_057716.2</a>
Reactivity	Human
Host	Rabbit
Clonality	Polyclonal
Isotype	Rabbit IgG
Calculated MW	19388
Antigen Region	102-130

**ARL17P1 Antibody (Center) - Additional Information**

**Gene ID** 100506084;51326

**Other Names**

ADP-ribosylation factor-like protein 17, ADP-ribosylation factor 7 variant, ARL17A, ARL17P1

**Target/Specificity**

This ARL17P1 antibody is generated from rabbits immunized with a KLH conjugated synthetic peptide between 102-130 amino acids from the Central region of human ARL17P1.

**Dilution**

WB~~1:1000  
IHC-P~~1:50~100  
FC~~1:10~50  
E~~Use at an assay dependent concentration.

**Format**

Purified polyclonal antibody supplied in PBS with 0.09% (W/V) sodium azide. This antibody is purified through a protein A column, followed by peptide affinity purification.

**Storage**

Maintain refrigerated at 2-8°C for up to 2 weeks. For long term storage store at -20°C in small aliquots to prevent freeze-thaw cycles.

**Precautions**

ARL17P1 Antibody (Center) is for research use only and not for use in diagnostic or therapeutic procedures.

**ARL17P1 Antibody (Center) - Protein Information**

**Name** ARL17A

**Synonyms** ARL17P1

**Function** GTP-binding protein that functions as an allosteric activator of the cholera toxin catalytic subunit, an ADP-ribosyltransferase. Involved in protein trafficking; may modulate vesicle budding and uncoating within the Golgi apparatus (By similarity).

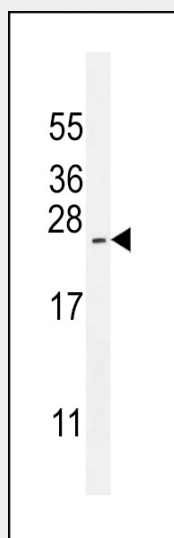
**Cellular Location**

Golgi apparatus.

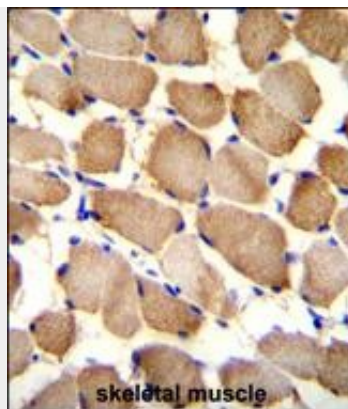
**ARL17P1 Antibody (Center) - Protocols**

Provided below are standard protocols that you may find useful for product applications.

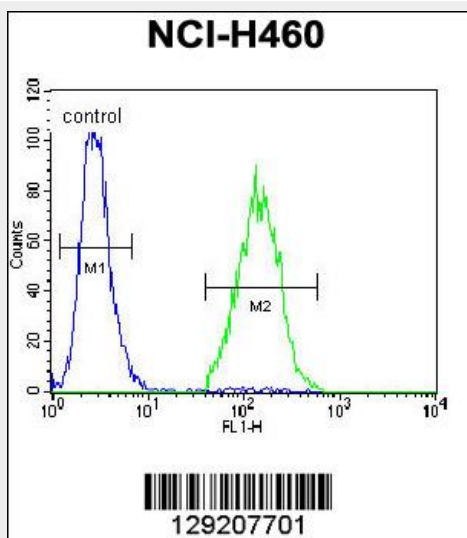
- [Western Blot](#)
- [Blocking Peptides](#)
- [Dot Blot](#)
- [Immunohistochemistry](#)
- [Immunofluorescence](#)
- [Immunoprecipitation](#)
- [Flow Cytometry](#)
- [Cell Culture](#)

**ARL17P1 Antibody (Center) - Images**

ARL17P1 Antibody (Center) (Cat. #AP11597c) western blot analysis in NCI-H460 cell line lysates (35ug/lane). This demonstrates the ARL17P1 antibody detected the ARL17P1 protein (arrow).



ARL17P1 Antibody (Center) (Cat. #AP11597c) immunohistochemistry analysis in formalin fixed and paraffin embedded human skeletal muscle followed by peroxidase conjugation of the secondary antibody and DAB staining. This data demonstrates the use of ARL17P1 Antibody (Center) for immunohistochemistry. Clinical relevance has not been evaluated.



ARL17P1 Antibody (Center) (Cat. #AP11597c) flow cytometric analysis of NCI-H460 cells (right histogram) compared to a negative control cell (left histogram). FITC-conjugated goat-anti-rabbit secondary antibodies were used for the analysis.

#### **ARL17P1 Antibody (Center) - Background**

GTP-binding protein that functions as an allosteric activator of the cholera toxin catalytic subunit, an ADP-ribosyltransferase. Involved in protein trafficking; may modulate vesicle budding and uncoating within the Golgi apparatus (By similarity).

#### **ARL17P1 Antibody (Center) - References**

Gerhard, D.S., et al. Genome Res. 14 (10B), 2121-2127 (2004) :  
Strausberg, R.L., et al. Proc. Natl. Acad. Sci. U.S.A. 99(26):16899-16903(2002)