

**KCTD8 Antibody (C-term)**  
**Affinity Purified Rabbit Polyclonal Antibody (Pab)**  
**Catalog # AP11599b****Specification**

---

**KCTD8 Antibody (C-term) - Product Information**

Application	WB, IHC-P,E
Primary Accession	<a href="#">O6ZWB6</a>
Other Accession	<a href="#">NP_938167.1</a>
Reactivity	Human, Mouse
Host	Rabbit
Clonality	Polyclonal
Isotype	Rabbit IgG
Calculated MW	52440
Antigen Region	434-462

**KCTD8 Antibody (C-term) - Additional Information****Gene ID** 386617**Other Names**

BTB/POZ domain-containing protein KCTD8, KCTD8

**Target/Specificity**

This KCTD8 antibody is generated from rabbits immunized with a KLH conjugated synthetic peptide between 434-462 amino acids from the C-terminal region of human KCTD8.

**Dilution**

WB~~1:1000

IHC-P~~1:50~100

**Format**

Purified polyclonal antibody supplied in PBS with 0.09% (W/V) sodium azide. This antibody is purified through a protein A column, followed by peptide affinity purification.

**Storage**

Maintain refrigerated at 2-8°C for up to 2 weeks. For long term storage store at -20°C in small aliquots to prevent freeze-thaw cycles.

**Precautions**

KCTD8 Antibody (C-term) is for research use only and not for use in diagnostic or therapeutic procedures.

**KCTD8 Antibody (C-term) - Protein Information****Name** KCTD8**Function** Auxiliary subunit of GABA-B receptors that determine the pharmacology and kinetics of

the receptor response. Increases agonist potency and markedly alter the G-protein signaling of the receptors by accelerating onset and promoting desensitization (By similarity).

#### Cellular Location

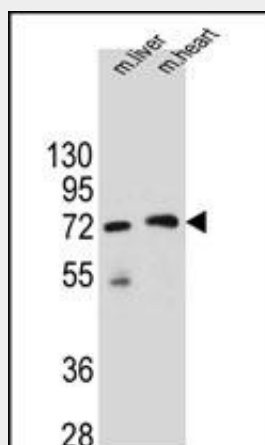
Presynaptic cell membrane. Postsynaptic cell membrane

#### KCTD8 Antibody (C-term) - Protocols

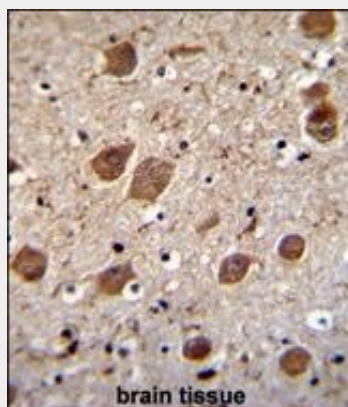
Provided below are standard protocols that you may find useful for product applications.

- [Western Blot](#)
- [Blocking Peptides](#)
- [Dot Blot](#)
- [Immunohistochemistry](#)
- [Immunofluorescence](#)
- [Immunoprecipitation](#)
- [Flow Cytometry](#)
- [Cell Culture](#)

#### KCTD8 Antibody (C-term) - Images



KCTD8 Antibody (C-term) (Cat. #AP11599b) western blot analysis in mouse liver and heart tissue lysates (35ug/lane). This demonstrates the KCTD8 antibody detected the KCTD8 protein (arrow).



KCTD8 Antibody (C-term) (Cat. #AP11599b) immunohistochemistry analysis in formalin fixed and paraffin embedded human brain tissue followed by peroxidase conjugation of the secondary

antibody and DAB staining. This data demonstrates the use of KCTD8 Antibody (C-term) for immunohistochemistry. Clinical relevance has not been evaluated.

**KCTD8 Antibody (C-term) - Background**

Auxiliary subunit of GABA-B receptors that determine the pharmacology and kinetics of the receptor response. Increases agonist potency and markedly alter the G-protein signaling of the receptors by accelerating onset and promoting desensitization (By similarity).

**KCTD8 Antibody (C-term) - References**

Strausberg, R.L., et al. Proc. Natl. Acad. Sci. U.S.A. 99(26):16899-16903(2002)