

ECT2L Antibody (C-term)
Affinity Purified Rabbit Polyclonal Antibody (Pab)
Catalog # AP11601b

Specification

ECT2L Antibody (C-term) - Product Information

Application	IHC-P, WB,E
Primary Accession	Q008S8
Other Accession	NP_001181966.1 , NP_001071174.1
Reactivity	Human
Host	Rabbit
Clonality	Polyclonal
Isotype	Rabbit IgG
Calculated MW	104880
Antigen Region	725-753

ECT2L Antibody (C-term) - Additional Information

Gene ID 345930

Other Names

Epithelial cell-transforming sequence 2 oncogene-like, Lung-specific F-box and DH domain-containing protein, Putative guanine nucleotide exchange factor LFDH, ECT2L, C6orf91, LFDH

Target/Specificity

This ECT2L antibody is generated from rabbits immunized with a KLH conjugated synthetic peptide between 725-753 amino acids from the C-terminal region of human ECT2L.

Dilution

IHC-P~~1:50~100

WB~~1:1000

E~~Use at an assay dependent concentration.

Format

Purified polyclonal antibody supplied in PBS with 0.09% (W/V) sodium azide. This antibody is purified through a protein A column, followed by peptide affinity purification.

Storage

Maintain refrigerated at 2-8°C for up to 2 weeks. For long term storage store at -20°C in small aliquots to prevent freeze-thaw cycles.

Precautions

ECT2L Antibody (C-term) is for research use only and not for use in diagnostic or therapeutic procedures.

ECT2L Antibody (C-term) - Protein Information

Name ECT2L

Synonyms C6orf91, LFDH

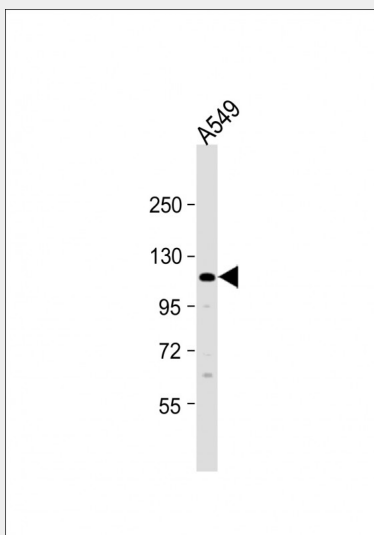
Function May act as a guanine nucleotide exchange factor (GEF).

ECT2L Antibody (C-term) - Protocols

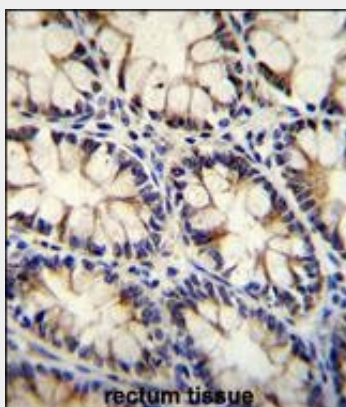
Provided below are standard protocols that you may find useful for product applications.

- [Western Blot](#)
- [Blocking Peptides](#)
- [Dot Blot](#)
- [Immunohistochemistry](#)
- [Immunofluorescence](#)
- [Immunoprecipitation](#)
- [Flow Cytometry](#)
- [Cell Culture](#)

ECT2L Antibody (C-term) - Images



Anti-ECT2L Antibody (C-term) at 1:1000 dilution + A549 whole cell lysate Lysates/proteins at 20 μ g per lane. Secondary Goat Anti-Rabbit IgG, (H+L), Peroxidase conjugated at 1/10000 dilution. Predicted band size : 105 kDa Blocking/Dilution buffer: 5% NFDN/TBST.



ECT2L Antibody (C-term) (Cat. #AP11601b) immunohistochemistry analysis in formalin fixed and paraffin embedded human rectum tissue followed by peroxidase conjugation of the secondary antibody and DAB staining. This data demonstrates the use of ECT2L Antibody (C-term) for immunohistochemistry. Clinical relevance has not been evaluated.

ECT2L Antibody (C-term) - Background

ECT2L may act as a guanine nucleotide exchange factor (GEF) (By similarity).

ECT2L Antibody (C-term) - References

Rose, J.E., et al. Mol. Med. 16 (7-8), 247-253 (2010) :