

**XKR4 Antibody (C-term)**  
**Affinity Purified Rabbit Polyclonal Antibody (Pab)**  
**Catalog # AP11606b**

**Specification**

---

**XKR4 Antibody (C-term) - Product Information**

Application	WB, IHC-P, IF,E
Primary Accession	<a href="#">Q5GH76</a>
Other Accession	<a href="#">Q5GH59</a> , <a href="#">Q5GH67</a> , <a href="#">NP_443130.1</a>
Reactivity	Human
Predicted	Mouse, Rat
Host	Rabbit
Clonality	Polyclonal
Isotype	Rabbit IgG
Calculated MW	71501
Antigen Region	570-598

**XKR4 Antibody (C-term) - Additional Information**

**Gene ID** 114786

**Other Names**

XK-related protein 4, XKR4, KIAA1889, XRG4

**Target/Specificity**

This XKR4 antibody is generated from rabbits immunized with a KLH conjugated synthetic peptide between 570-598 amino acids from the C-terminal region of human XKR4.

**Dilution**

WB~~1:1000

IHC-P~~1:10~50

IF~~1:10~50

E~~Use at an assay dependent concentration.

**Format**

Purified polyclonal antibody supplied in PBS with 0.09% (W/V) sodium azide. This antibody is purified through a protein A column, followed by peptide affinity purification.

**Storage**

Maintain refrigerated at 2-8°C for up to 2 weeks. For long term storage store at -20°C in small aliquots to prevent freeze-thaw cycles.

**Precautions**

XKR4 Antibody (C-term) is for research use only and not for use in diagnostic or therapeutic procedures.

**XKR4 Antibody (C-term) - Protein Information**

**Name** XKR4 {ECO:0000303|PubMed:25231987, ECO:0000312|HGNC:HGNC:29394}

**Function** [XK-related protein 4, processed form]: Phospholipid scramblase that promotes phosphatidylserine exposure on apoptotic cell surface (PubMed:[25231987](#), PubMed:[33725486](#)). Phosphatidylserine is a specific marker only present at the surface of apoptotic cells and acts as a specific signal for engulfment (PubMed:[25231987](#), PubMed:[33725486](#)).

**Cellular Location**

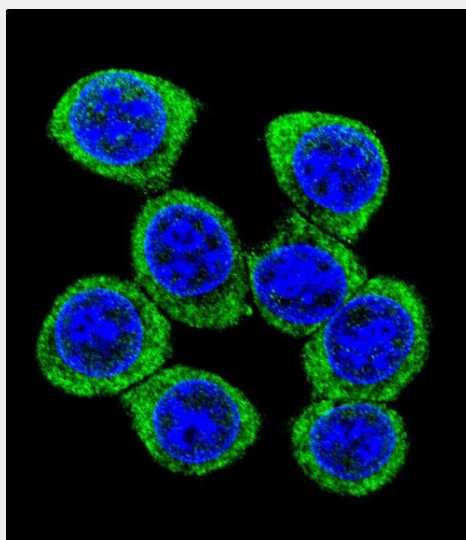
Cell membrane {ECO:0000250|UniProtKB:Q5GH67}; Multi-pass membrane protein

**XKR4 Antibody (C-term) - Protocols**

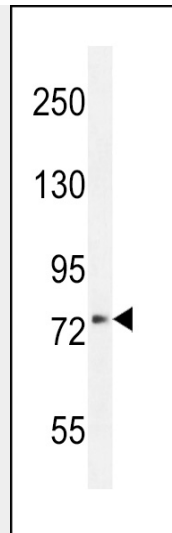
Provided below are standard protocols that you may find useful for product applications.

- [Western Blot](#)
- [Blocking Peptides](#)
- [Dot Blot](#)
- [Immunohistochemistry](#)
- [Immunofluorescence](#)
- [Immunoprecipitation](#)
- [Flow Cytometry](#)
- [Cell Culture](#)

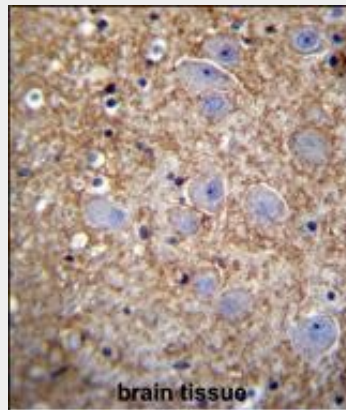
**XKR4 Antibody (C-term) - Images**



Confocal immunofluorescent analysis of XKR4 Antibody (C-term)(Cat#AP11606b) with 293 cell followed by Alexa Fluor 488-conjugated goat anti-rabbit IgG (green). DAPI was used to stain the cell nuclear (blue).



XKR4 Antibody (C-term) (Cat. #AP11606b) western blot analysis in 293 cell line lysates (35ug/lane). This demonstrates the XKR4 antibody detected the XKR4 protein (arrow).



XKR4 Antibody (C-term) (Cat. #AP11606b) immunohistochemistry analysis in formalin fixed and paraffin embedded human brain tissue followed by peroxidase conjugation of the secondary antibody and DAB staining. This data demonstrates the use of XKR4 Antibody (C-term) for immunohistochemistry. Clinical relevance has not been evaluated.

#### **XKR4 Antibody (C-term) - Background**

The specific function of the protein remains unknown.

#### **XKR4 Antibody (C-term) - References**

Rose, J.E., et al. Mol. Med. 16 (7-8), 247-253 (2010) :  
Lavedan, C., et al. Mol. Psychiatry 14(8):804-819(2009)  
Volpi, S., et al. J Clin Psychiatry 70(6):801-809(2009)  
Sugiyama, N., et al. Mol. Cell Proteomics 6(6):1103-1109(2007)