

KILLIN Antibody (C-term)
Affinity Purified Rabbit Polyclonal Antibody (Pab)
Catalog # AP11611b**Specification**

KILLIN Antibody (C-term) - Product Information

| | |
|-------------------|--------------------------------|
| Application | WB,E |
| Primary Accession | B2CW77 |
| Other Accession | NP_001119521.1 |
| Reactivity | Human |
| Host | Rabbit |
| Clonality | Polyclonal |
| Isotype | Rabbit IgG |
| Antigen Region | 136-163 |

KILLIN Antibody (C-term) - Additional Information**Gene ID** 100144748**Other Names**

Killin, KLLN

Target/Specificity

This KILLIN antibody is generated from rabbits immunized with a KLH conjugated synthetic peptide between 136-163 amino acids from the C-terminal region of human KILLIN.

Dilution

WB~~1:500

E~~Use at an assay dependent concentration.

Format

Purified polyclonal antibody supplied in PBS with 0.09% (W/V) sodium azide. This antibody is purified through a protein A column, followed by peptide affinity purification.

Storage

Maintain refrigerated at 2-8°C for up to 2 weeks. For long term storage store at -20°C in small aliquots to prevent freeze-thaw cycles.

Precautions

KILLIN Antibody (C-term) is for research use only and not for use in diagnostic or therapeutic procedures.

KILLIN Antibody (C-term) - Protein Information**Name** KLLN

Function DNA-binding protein involved in S phase checkpoint control- coupled apoptosis by mediating p53/TP53-induced apoptosis. Has the ability to inhibit DNA synthesis and S phase arrest

coupled to apoptosis. Has affinity to both double- and single-stranded DNA.

Cellular Location

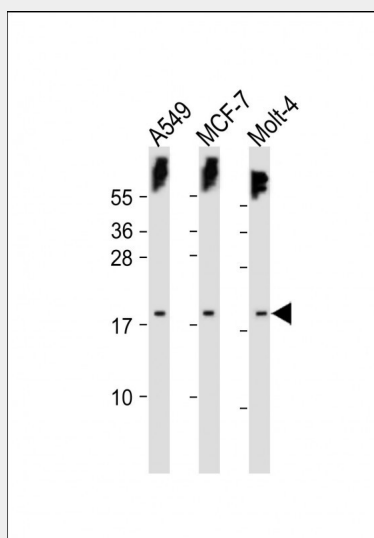
Nucleus.

KILLIN Antibody (C-term) - Protocols

Provided below are standard protocols that you may find useful for product applications.

- [Western Blot](#)
- [Blocking Peptides](#)
- [Dot Blot](#)
- [Immunohistochemistry](#)
- [Immunofluorescence](#)
- [Immunoprecipitation](#)
- [Flow Cytometry](#)
- [Cell Culture](#)

KILLIN Antibody (C-term) - Images



All lanes : Anti-KILLIN Antibody (C-term) at 1:500 dilution Lane 1: A549 whole cell lysate Lane 2: MCF-7 whole cell lysate Lane 3: Molt-4 whole cell lysate Lysates/proteins at 20 µg per lane. Secondary Goat Anti-Rabbit IgG, (H+L), Peroxidase conjugated at 1/10000 dilution. Predicted band size : 20 kDa Blocking/Dilution buffer: 5% NFDN/TBST.

KILLIN Antibody (C-term) - Background

DNA-binding protein involved in S phase checkpoint control-coupled apoptosis by mediating TP53/p53-induced apoptosis. Has the ability to inhibit DNA synthesis and S phase arrest coupled to apoptosis. Has affinity to both double-and single-stranded DNA.

KILLIN Antibody (C-term) - References

Cho, Y.J., et al. Proc. Natl. Acad. Sci. U.S.A. 105(14):5396-5401(2008)

KILLIN Antibody (C-term) - Citations

- [Nuclear KLLN expression associates with improved relapse-free survival for prostate carcinoma.](#)

- [Activation of AR sensitizes breast carcinomas to NVP-BEZ235's therapeutic effect mediated by PTEN and KLLN upregulation.](#)
- [Androgen receptor-induced tumor suppressor, KLLN, inhibits breast cancer growth and transcriptionally activates p53/p73-mediated apoptosis in breast carcinomas.](#)