

TTC23L Antibody (C-term)
Affinity Purified Rabbit Polyclonal Antibody (Pab)
Catalog # AP11614b**Specification**

TTC23L Antibody (C-term) - Product Information

Application	WB, IHC-P,E
Primary Accession	Q6PF05
Other Accession	NP_653326.3
Reactivity	Mouse
Host	Rabbit
Clonality	Polyclonal
Isotype	Rabbit IgG
Calculated MW	40837
Antigen Region	319-348

TTC23L Antibody (C-term) - Additional Information**Gene ID** 153657**Other Names**

Tetratricopeptide repeat protein 23-like, TTC23L

Target/Specificity

This TTC23L antibody is generated from rabbits immunized with a KLH conjugated synthetic peptide between 319-348 amino acids from the C-terminal region of human TTC23L.

Dilution

WB~~1:1000

IHC-P~~1:10~50

E~~Use at an assay dependent concentration.

Format

Purified polyclonal antibody supplied in PBS with 0.09% (W/V) sodium azide. This antibody is purified through a protein A column, followed by peptide affinity purification.

Storage

Maintain refrigerated at 2-8°C for up to 2 weeks. For long term storage store at -20°C in small aliquots to prevent freeze-thaw cycles.

Precautions

TTC23L Antibody (C-term) is for research use only and not for use in diagnostic or therapeutic procedures.

TTC23L Antibody (C-term) - Protein Information**Name** TTC23L

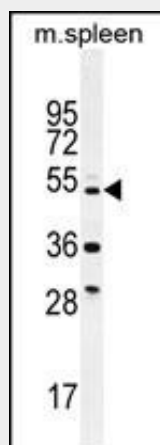
Cellular Location

Cytoplasm, cytoskeleton, microtubule organizing center, centrosome. Cytoplasm, cytoskeleton, spindle. Midbody. Note=Exhibits dynamic subcellular localization during the cell cycle. In prophase cells, detected on split centrosomes. Translocates to the mitotic spindles during metaphase and early anaphase, then to the midbody and cleavage furrow in late anaphase.

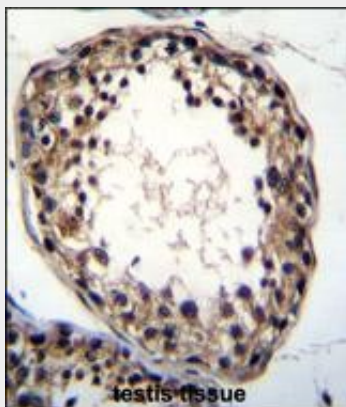
TTC23L Antibody (C-term) - Protocols

Provided below are standard protocols that you may find useful for product applications.

- [Western Blot](#)
- [Blocking Peptides](#)
- [Dot Blot](#)
- [Immunohistochemistry](#)
- [Immunofluorescence](#)
- [Immunoprecipitation](#)
- [Flow Cytometry](#)
- [Cell Culture](#)

TTC23L Antibody (C-term) - Images

TTC23L Antibody (C-term) (Cat. #AP11614b) western blot analysis in mouse spleen tissue lysates (35ug/lane). This demonstrates the TTC23L antibody detected the TTC23L protein (arrow).



TTC23L Antibody (C-term) (Cat. #AP11614b) immunohistochemistry analysis in formalin fixed and paraffin embedded human testis tissue followed by peroxidase conjugation of the secondary

antibody and DAB staining. This data demonstrates the use of TTC23L Antibody (C-term) for immunohistochemistry. Clinical relevance has not been evaluated.

TTC23L Antibody (C-term) - Background

The specific function of the protein remains unknown.

TTC23L Antibody (C-term) - References

Rose, J.E., et al. Mol. Med. 16 (7-8), 247-253 (2010) :
Lamesch, P., et al. Genomics 89(3):307-315(2007)