

**BTBD17 Antibody (C-term)**  
**Affinity Purified Rabbit Polyclonal Antibody (Pab)**  
**Catalog # AP11620b****Specification**

---

**BTBD17 Antibody (C-term) - Product Information**

Application	WB, IHC-P,E
Primary Accession	<a href="#">A6NE02</a>
Other Accession	<a href="#">O9DB72</a> , <a href="#">NP_001073935.1</a>
Reactivity	Mouse
Host	Rabbit
Clonality	Polyclonal
Isotype	Rabbit IgG
Calculated MW	52471
Antigen Region	411-440

**BTBD17 Antibody (C-term) - Additional Information****Gene ID** 388419**Other Names**

BTB/POZ domain-containing protein 17, Galectin-3-binding protein-like, BTBD17

**Target/Specificity**

This BTBD17 antibody is generated from rabbits immunized with a KLH conjugated synthetic peptide between 411-440 amino acids from the C-terminal region of human BTBD17.

**Dilution**

WB~~1:1000

IHC-P~~1:10~50

**Format**

Purified polyclonal antibody supplied in PBS with 0.09% (W/V) sodium azide. This antibody is purified through a protein A column, followed by peptide affinity purification.

**Storage**

Maintain refrigerated at 2-8°C for up to 2 weeks. For long term storage store at -20°C in small aliquots to prevent freeze-thaw cycles.

**Precautions**

BTBD17 Antibody (C-term) is for research use only and not for use in diagnostic or therapeutic procedures.

**BTBD17 Antibody (C-term) - Protein Information****Name** BTBD17**Cellular Location**

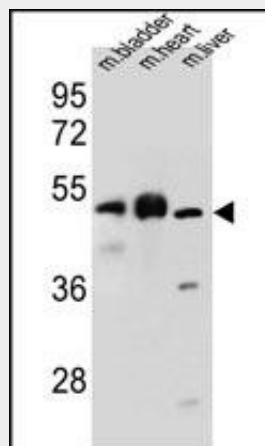
Secreted.

### BTBD17 Antibody (C-term) - Protocols

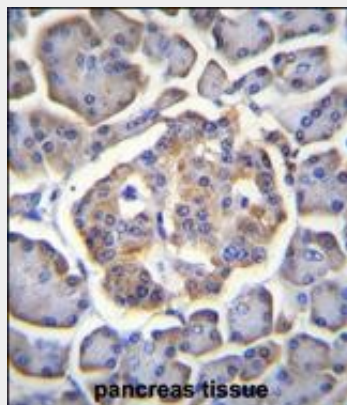
Provided below are standard protocols that you may find useful for product applications.

- [Western Blot](#)
- [Blocking Peptides](#)
- [Dot Blot](#)
- [Immunohistochemistry](#)
- [Immunofluorescence](#)
- [Immunoprecipitation](#)
- [Flow Cytometry](#)
- [Cell Culture](#)

### BTBD17 Antibody (C-term) - Images



BTBD17 Antibody (C-term) (Cat. #AP11620b) western blot analysis in mouse bladder, heart, liver tissue lysates (35ug/lane). This demonstrates the BTBD17 antibody detected the BTBD17 protein (arrow).



BTBD17 Antibody (C-term) (Cat. #AP11620b) immunohistochemistry analysis in formalin fixed and paraffin embedded human pancreas tissue followed by peroxidase conjugation of the secondary antibody and DAB staining. This data demonstrates the use of BTBD17 Antibody (C-term) for immunohistochemistry. Clinical relevance has not been evaluated.

### BTBD17 Antibody (C-term) - Background

The specific function of the protein remains unknown.

**BTBD17 Antibody (C-term) - References**

Zody, M.C., et al. Nature 440(7087):1045-1049(2006)