

EPHX3 Antibody (C-term)
Affinity Purified Rabbit Polyclonal Antibody (Pab)
Catalog # AP11641b**Specification**

EPHX3 Antibody (C-term) - Product Information

Application	WB, IHC-P,E
Primary Accession	Q9H6B9
Other Accession	NP_079070.1 , NP_001136358.1
Reactivity	Human
Host	Rabbit
Clonality	Polyclonal
Isotype	Rabbit IgG
Calculated MW	40909
Antigen Region	266-294

EPHX3 Antibody (C-term) - Additional Information**Gene ID** 79852**Other Names**

Epoxide hydrolase 3, 33--, Abhydrolase domain-containing protein 9, EPHX3, ABHD9

Target/Specificity

This EPHX3 antibody is generated from rabbits immunized with a KLH conjugated synthetic peptide between 266-294 amino acids from the C-terminal region of human EPHX3.

Dilution

WB~~1:1000

IHC-P~~1:10~50

E~~Use at an assay dependent concentration.

Format

Purified polyclonal antibody supplied in PBS with 0.09% (W/V) sodium azide. This antibody is purified through a protein A column, followed by peptide affinity purification.

Storage

Maintain refrigerated at 2-8°C for up to 2 weeks. For long term storage store at -20°C in small aliquots to prevent freeze-thaw cycles.

Precautions

EPHX3 Antibody (C-term) is for research use only and not for use in diagnostic or therapeutic procedures.

EPHX3 Antibody (C-term) - Protein Information**Name** EPHX3

Synonyms ABHD9

Function Catalyzes the hydrolysis of epoxide-containing fatty acids. Active in vitro against epoxyeicosatrienoic acids (EETs) including 8,9- EET, 9,10-EET, 11,12-EET and 14,15-EET and leukotoxin.

Cellular Location

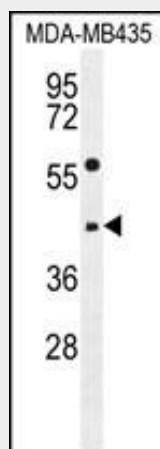
Microsome membrane; Single-pass membrane protein

EPHX3 Antibody (C-term) - Protocols

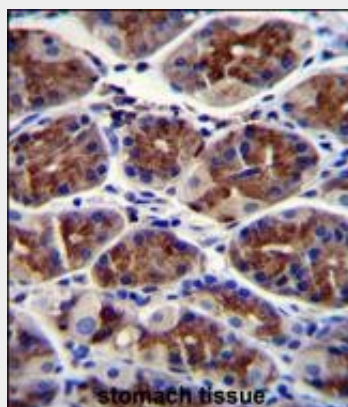
Provided below are standard protocols that you may find useful for product applications.

- [Western Blot](#)
- [Blocking Peptides](#)
- [Dot Blot](#)
- [Immunohistochemistry](#)
- [Immunofluorescence](#)
- [Immunoprecipitation](#)
- [Flow Cytometry](#)
- [Cell Culture](#)

EPHX3 Antibody (C-term) - Images



EPHX3 Antibody (C-term) (Cat. #AP11641b) western blot analysis in MDA-MB435 cell line lysates (35ug/lane). This demonstrates the EPHX3 antibody detected the EPHX3 protein (arrow).



EPHX3 Antibody (C-term) (Cat. #AP11641b) immunohistochemistry analysis in formalin fixed and paraffin embedded human stomach tissue followed by peroxidase conjugation of the secondary antibody and DAB staining. This data demonstrates the use of EPHX3 Antibody (C-term) for immunohistochemistry. Clinical relevance has not been evaluated.

EPHX3 Antibody (C-term) - Background

The specific function of the protein remains unknown.

EPHX3 Antibody (C-term) - References

Cottrell, S., et al. J. Urol. 177(5):1753-1758(2007)
Fu, G.K., et al. Genomics 84(1):205-210(2004)