

LILRA5 Antibody (N-term)
Affinity Purified Rabbit Polyclonal Antibody (Pab)
Catalog # AP11643a**Specification**

LILRA5 Antibody (N-term) - Product Information

Application	WB,E
Primary Accession	A6N173
Other Accession	NP_871715.1 , NP_067073.1 , NP_871714.1 , NP_870994.1
Reactivity	Human
Host	Rabbit
Clonality	Polyclonal
Isotype	Rabbit IgG
Calculated MW	32755
Antigen Region	56-85

LILRA5 Antibody (N-term) - Additional Information**Gene ID** 353514**Other Names**

Leukocyte immunoglobulin-like receptor subfamily A member 5, CD85 antigen-like family member F, Immunoglobulin-like transcript 11, ILT-11, Leukocyte immunoglobulin-like receptor 9, LIR-9, CD85f, LILRA5, ILT11, LILRB7, LIR9

Target/Specificity

This LILRA5 antibody is generated from rabbits immunized with a KLH conjugated synthetic peptide between 56-85 amino acids from the N-terminal region of human LILRA5.

Dilution

WB~~1:1000

Format

Purified polyclonal antibody supplied in PBS with 0.09% (W/V) sodium azide. This antibody is purified through a protein A column, followed by peptide affinity purification.

Storage

Maintain refrigerated at 2-8°C for up to 2 weeks. For long term storage store at -20°C in small aliquots to prevent freeze-thaw cycles.

Precautions

LILRA5 Antibody (N-term) is for research use only and not for use in diagnostic or therapeutic procedures.

LILRA5 Antibody (N-term) - Protein Information**Name** LILRA5

Synonyms ILT11, LILRB7, LIR9

Function May play a role in triggering innate immune responses. Does not seem to play a role for any class I MHC antigen recognition.

Cellular Location

Cell membrane; Single-pass type I membrane protein

Tissue Location

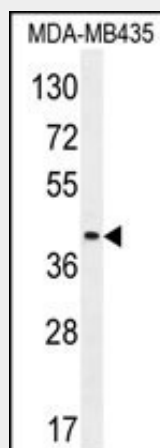
Expressed mostly in tissues of the hematopoietic system, including bone marrow, spleen, lymph node and peripheral leukocytes. Among leukocytes, monocytes and neutrophils express the highest level. Expressed in CD14+ monocytes, but not in T-cells, B- cells or natural killer (NK) cells (at protein level)

LILRA5 Antibody (N-term) - Protocols

Provided below are standard protocols that you may find useful for product applications.

- [Western Blot](#)
- [Blocking Peptides](#)
- [Dot Blot](#)
- [Immunohistochemistry](#)
- [Immunofluorescence](#)
- [Immunoprecipitation](#)
- [Flow Cytometry](#)
- [Cell Culture](#)

LILRA5 Antibody (N-term) - Images



LILRA5 Antibody (N-term) (Cat. #AP11643a) western blot analysis in MDA-MB435 cell line lysates (35ug/lane). This demonstrates the LILRA5 antibody detected the LILRA5 protein (arrow).

LILRA5 Antibody (N-term) - Background

The protein encoded by this gene is a member of the leukocyte immunoglobulin-like receptor (LIR) family. LIR family members are known to have activating and inhibitory functions in leukocytes. Crosslink of this receptor protein on the surface of monocytes has been shown to induce calcium flux and secretion of several proinflammatory cytokines, which suggests the roles of this

protein in triggering innate immune responses. This gene is one of the leukocyte receptor genes that form a gene cluster on the chromosomal region 19q13.4. Four alternatively spliced transcript variants encoding distinct isoforms have been described. [provided by RefSeq].

LILRA5 Antibody (N-term) - References

Mosbrugger, T.L., et al. J. Infect. Dis. 201(9):1371-1380(2010)
Jones, D.C., et al. Eur. J. Immunol. 39(11):3195-3206(2009)
Shiroishi, M., et al. J. Biol. Chem. 281(28):19536-19544(2006)
Borges, L., et al. Blood 101(4):1484-1486(2003)
Wende, H., et al. Immunogenetics 51 (8-9), 703-713 (2000) :