

**SLC16A8 Antibody (C-term)**  
**Affinity Purified Rabbit Polyclonal Antibody (Pab)**  
**Catalog # AP11651b****Specification**

---

**SLC16A8 Antibody (C-term) - Product Information**

Application	WB,E
Primary Accession	<a href="#">O95907</a>
Other Accession	<a href="#">NP_037488.2</a>
Reactivity	Human
Host	Rabbit
Clonality	Polyclonal
Isotype	Rabbit IgG
Calculated MW	52319
Antigen Region	466-493

**SLC16A8 Antibody (C-term) - Additional Information****Gene ID** 23539**Other Names**

Monocarboxylate transporter 3, MCT 3, Solute carrier family 16 member 8, SLC16A8, MCT3

**Target/Specificity**

This SLC16A8 antibody is generated from rabbits immunized with a KLH conjugated synthetic peptide between 466-493 amino acids from the C-terminal region of human SLC16A8.

**Dilution**

WB~~1:1000

E~~Use at an assay dependent concentration.

**Format**

Purified polyclonal antibody supplied in PBS with 0.09% (W/V) sodium azide. This antibody is purified through a protein A column, followed by peptide affinity purification.

**Storage**

Maintain refrigerated at 2-8°C for up to 2 weeks. For long term storage store at -20°C in small aliquots to prevent freeze-thaw cycles.

**Precautions**

SLC16A8 Antibody (C-term) is for research use only and not for use in diagnostic or therapeutic procedures.

**SLC16A8 Antibody (C-term) - Protein Information****Name** SLC16A8 ([HGNC:16270](#))**Synonyms** MCT3

**Function** Probable retinal pigment epithelium (RPE)-specific proton- coupled L-lactate transporter (By similarity). May facilitate transport of lactate and H(+) out of the retina and could therefore play a role in pH and ion homeostasis of the outer retina (By similarity).

#### **Cellular Location**

Basolateral cell membrane; Multi-pass membrane protein. Note=Basolateral sorting signals (BLSS) in C-terminal cytoplasmic tail ensure its basolateral expression (PubMed:21199217) Colocalizes with BSG in basolateral cell membrane of the retinal pigment epithelium (By similarity). {ECO:0000250|UniProtKB:O35308, ECO:0000269|PubMed:21199217}

#### **Tissue Location**

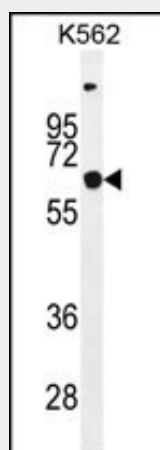
Retinal pigment epithelium.

### **SLC16A8 Antibody (C-term) - Protocols**

Provided below are standard protocols that you may find useful for product applications.

- [Western Blot](#)
- [Blocking Peptides](#)
- [Dot Blot](#)
- [Immunohistochemistry](#)
- [Immunofluorescence](#)
- [Immunoprecipitation](#)
- [Flow Cytometry](#)
- [Cell Culture](#)

### **SLC16A8 Antibody (C-term) - Images**



SLC16A8 Antibody (C-term) (Cat. #AP11651b) western blot analysis in K562 cell line lysates (35ug/lane). This demonstrates the SLC16A8 antibody detected the SLC16A8 protein (arrow).

### **SLC16A8 Antibody (C-term) - Background**

SLC16A8 is a member of a family of proton-coupled monocarboxylate transporters that mediate lactate transport across cell membranes (Yoon et al., 1999 [PubMed 10493836]). [supplied by OMIM].

### **SLC16A8 Antibody (C-term) - References**

Yokoyama, K., et al. Nephron Clin Pract 115 (4), C237-C243 (2010) :  
Wilson, M.C., et al. J. Biol. Chem. 280(29):27213-27221(2005)  
Halestrap, A.P., et al. Pflugers Arch. 447(5):619-628(2004)  
Philp, N.J., et al. Invest. Ophthalmol. Vis. Sci. 44(4):1716-1721(2003)  
Dunham, I., et al. Nature 402(6761):489-495(1999)