

TUBB8B Antibody (C-term)
Affinity Purified Rabbit Polyclonal Antibody (Pab)
Catalog # AP11654b**Specification**

TUBB8B Antibody (C-term) - Product Information

| | |
|-------------------|------------------------|
| Application | WB, IHC-P, IF, FC,E |
| Primary Accession | A6NNZ2 |
| Other Accession | A6NNZ2 |
| Reactivity | Human |
| Host | Rabbit |
| Clonality | Polyclonal |
| Isotype | Rabbit IgG |
| Antigen Region | 253-280 |

TUBB8B Antibody (C-term) - Additional Information**Other Names**

Tubulin beta 8B

Target/Specificity

This TUBB8B antibody is generated from rabbits immunized with a KLH conjugated synthetic peptide between 253-280 amino acids from the C-terminal region of human TUBB8B.

Dilution

WB~~1:1000
IHC-P~~1:10~50
IF~~1:10~50
FC~~1:10~50
E~~Use at an assay dependent concentration.

Format

Purified polyclonal antibody supplied in PBS with 0.09% (W/V) sodium azide. This antibody is purified through a protein A column, followed by peptide affinity purification.

Storage

Maintain refrigerated at 2-8°C for up to 2 weeks. For long term storage store at -20°C in small aliquots to prevent freeze-thaw cycles.

Precautions

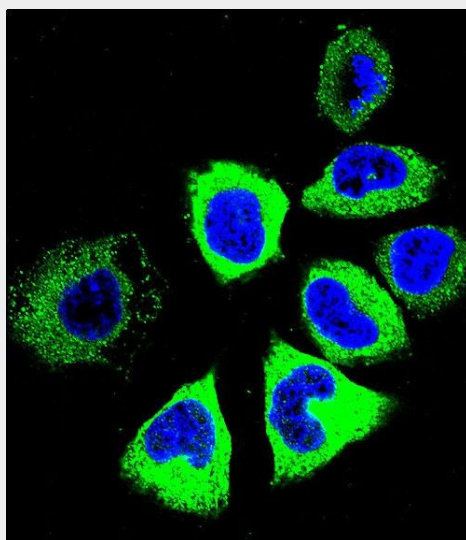
TUBB8B Antibody (C-term) is for research use only and not for use in diagnostic or therapeutic procedures.

TUBB8B Antibody (C-term) - Protein Information**TUBB8B Antibody (C-term) - Protocols**

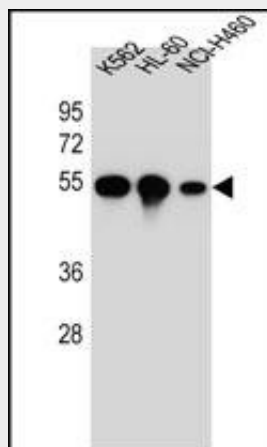
Provided below are standard protocols that you may find useful for product applications.

- [Western Blot](#)
- [Blocking Peptides](#)
- [Dot Blot](#)
- [Immunohistochemistry](#)
- [Immunofluorescence](#)
- [Immunoprecipitation](#)
- [Flow Cytometry](#)
- [Cell Culture](#)

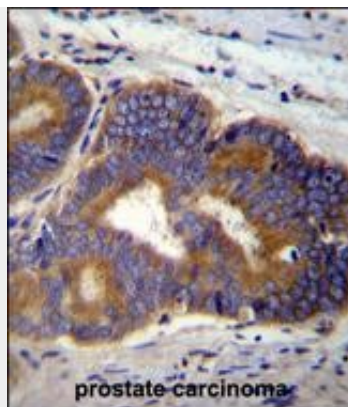
TUBB8B Antibody (C-term) - Images



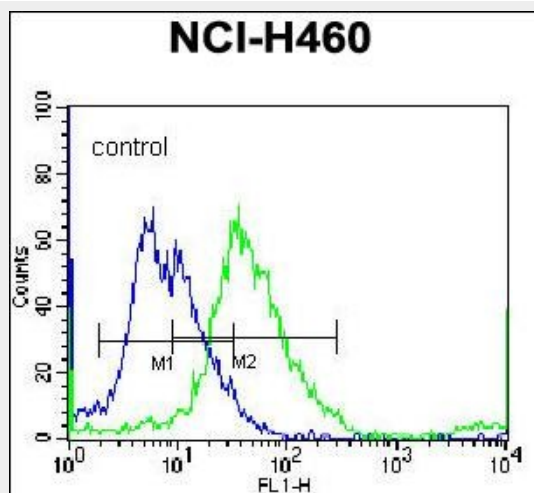
Confocal immunofluorescent analysis of TUBB8B Antibody (C-term) (Cat#AP11654b) with NCI-H460 cell followed by Alexa Fluor 488-conjugated goat anti-rabbit IgG (green). DAPI was used to stain the cell nuclear (blue).



TUBB8B Antibody (C-term) (Cat. #AP11654b) western blot analysis in K562,HL-60,NCI-H460 cell line lysates (35ug/lane).This demonstrates the TUBB8B antibody detected the TUBB8B protein (arrow).



TUBB8B Antibody (C-term) (Cat. #AP11654b) immunohistochemistry analysis in formalin fixed and paraffin embedded human prostate carcinoma followed by peroxidase conjugation of the secondary antibody and DAB staining. This data demonstrates the use of TUBB8B Antibody (C-term) for immunohistochemistry. Clinical relevance has not been evaluated.



TUBB8B Antibody (C-term) (Cat. #AP11654b) flow cytometric analysis of NCI-H460 cells (right histogram) compared to a negative control cell (left histogram). FITC-conjugated donkey-anti-rabbit secondary antibodies were used for the analysis.

TUBB8B Antibody (C-term) - Background

Tubulin is the major constituent of microtubules. It binds two moles of GTP, one at an exchangeable site on the beta chain and one at a non-exchangeable site on the alpha-chain (By similarity).