

**PCDHGA1 Antibody (Center)**  
**Affinity Purified Rabbit Polyclonal Antibody (Pab)**  
**Catalog # AP11662C**

**Specification**

---

**PCDHGA1 Antibody (Center) - Product Information**

Application	IHC-P, WB,E
Primary Accession	<a href="#">Q9Y5H4</a>
Other Accession	<a href="#">NP_061735.1</a> , <a href="#">NP_114382.1</a>
Reactivity	Human
Host	Rabbit
Clonality	Polyclonal
Isotype	Rabbit IgG
Calculated MW	101226
Antigen Region	287-315

**PCDHGA1 Antibody (Center) - Additional Information**

**Gene ID** 56114

**Other Names**

Protocadherin gamma-A1, PCDH-gamma-A1, PCDHGA1

**Target/Specificity**

This PCDHGA1 antibody is generated from rabbits immunized with a KLH conjugated synthetic peptide between 287-315 amino acids from the Central region of human PCDHGA1.

**Dilution**

IHC-P~~1:10~50

WB~~1:1000

E~~Use at an assay dependent concentration.

**Format**

Purified polyclonal antibody supplied in PBS with 0.09% (W/V) sodium azide. This antibody is purified through a protein A column, followed by peptide affinity purification.

**Storage**

Maintain refrigerated at 2-8°C for up to 2 weeks. For long term storage store at -20°C in small aliquots to prevent freeze-thaw cycles.

**Precautions**

PCDHGA1 Antibody (Center) is for research use only and not for use in diagnostic or therapeutic procedures.

**PCDHGA1 Antibody (Center) - Protein Information**

**Name** PCDHGA1

**Function** Potential calcium-dependent cell-adhesion protein. May be involved in the establishment and maintenance of specific neuronal connections in the brain.

**Cellular Location**

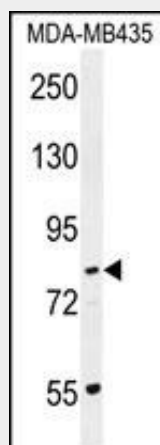
Cell membrane; Single-pass type I membrane protein

**PCDHGA1 Antibody (Center) - Protocols**

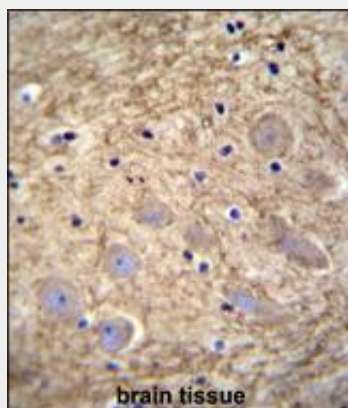
Provided below are standard protocols that you may find useful for product applications.

- [Western Blot](#)
- [Blocking Peptides](#)
- [Dot Blot](#)
- [Immunohistochemistry](#)
- [Immunofluorescence](#)
- [Immunoprecipitation](#)
- [Flow Cytometry](#)
- [Cell Culture](#)

**PCDHGA1 Antibody (Center) - Images**



PCDHGA1 Antibody (Center) (Cat. #AP11662c) western blot analysis in MDA-MB435 cell line lysates (35ug/lane). This demonstrates the PCDHGA1 antibody detected the PCDHGA1 protein (arrow).



PCDHGA1 Antibody (Center) (Cat. #AP11662c) immunohistochemistry analysis in formalin fixed

and paraffin embedded human brain tissue followed by peroxidase conjugation of the secondary antibody and DAB staining. This data demonstrates the use of PCDHGA1 Antibody (Center) for immunohistochemistry. Clinical relevance has not been evaluated.

#### **PCDHGA1 Antibody (Center) - Background**

This gene is a member of the protocadherin gamma gene cluster, one of three related clusters tandemly linked on chromosome five. These gene clusters have an immunoglobulin-like organization, suggesting that a novel mechanism may be involved in their regulation and expression. The gamma gene cluster includes 22 genes divided into 3 subfamilies. Subfamily A contains 12 genes, subfamily B contains 7 genes and 2 pseudogenes, and the more distantly related subfamily C contains 3 genes. The tandem array of 22 large, variable region exons are followed by a constant region, containing 3 exons shared by all genes in the cluster. Each variable region exon encodes the extracellular region, which includes 6 cadherin ectodomains and a transmembrane region. The constant region exons encode the common cytoplasmic region. These neural cadherin-like cell adhesion proteins most likely play a critical role in the establishment and function of specific cell-cell connections in the brain. Alternative splicing has been described for the gamma cluster genes.

#### **PCDHGA1 Antibody (Center) - References**

Rose, J.E., et al. Mol. Med. 16 (7-8), 247-253 (2010) :  
Wu, Q., et al. Genome Res. 11(3):389-404(2001)  
Nollet, F., et al. J. Mol. Biol. 299(3):551-572(2000)  
Yagi, T., et al. Genes Dev. 14(10):1169-1180(2000)  
Wu, Q., et al. Proc. Natl. Acad. Sci. U.S.A. 97(7):3124-3129(2000)