

TBX6 Antibody (Center W158)
Purified Rabbit Polyclonal Antibody (Pab)
Catalog # AP11675c**Specification**

TBX6 Antibody (Center W158) - Product Information

Application	WB, FC,E
Primary Accession	O95947
Other Accession	D3ZJK7 , P70327 , E1BEA8 , NP_004599.2
Reactivity	Human, Mouse
Predicted	Bovine, Rat
Host	Rabbit
Clonality	Polyclonal
Isotype	Rabbit IgG
Calculated MW	47045
Antigen Region	143-172

TBX6 Antibody (Center W158) - Additional Information**Gene ID** 6911**Other Names**

T-box transcription factor TBX6, T-box protein 6, TBX6

Target/Specificity

This TBX6 antibody is generated from rabbits immunized with a KLH conjugated synthetic peptide between 143-172 amino acids from the Central region of human TBX6.

Dilution

WB~~1:1000

FC~~1:10~50

E~~Use at an assay dependent concentration.

Format

Purified polyclonal antibody supplied in PBS with 0.09% (W/V) sodium azide. This antibody is prepared by Saturated Ammonium Sulfate (SAS) precipitation followed by dialysis against PBS.

Storage

Maintain refrigerated at 2-8°C for up to 2 weeks. For long term storage store at -20°C in small aliquots to prevent freeze-thaw cycles.

Precautions

TBX6 Antibody (Center W158) is for research use only and not for use in diagnostic or therapeutic procedures.

TBX6 Antibody (Center W158) - Protein Information**Name** TBX6

Function T-box transcription factor that plays an essential role in the determination of the fate of axial stem cells: neural vs mesodermal. Acts in part by down-regulating, a specific enhancer (N1) of SOX2, to inhibit neural development. Seems to play also an essential role in left/right axis determination and acts through effects on Notch signaling around the node as well as through an effect on the morphology and motility of the nodal cilia (By similarity).

Cellular Location

Nucleus {ECO:0000255|PROSITE-ProRule:PRU00201}.

Tissue Location

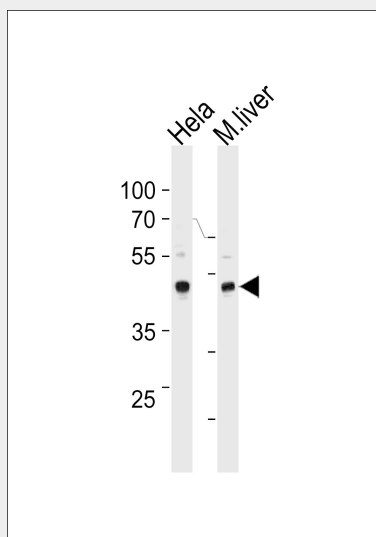
Expressed in fetal tail bud, posterior spinal tissue, intervertebral disk and testis. Also expressed in adult testis, kidney, lung, muscle and thymus

TBX6 Antibody (Center W158) - Protocols

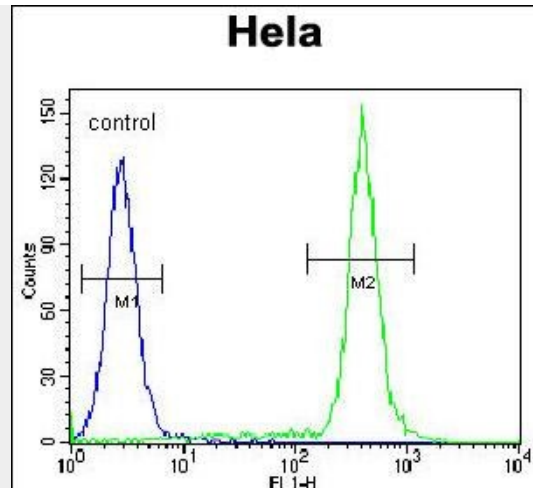
Provided below are standard protocols that you may find useful for product applications.

- [Western Blot](#)
- [Blocking Peptides](#)
- [Dot Blot](#)
- [Immunohistochemistry](#)
- [Immunofluorescence](#)
- [Immunoprecipitation](#)
- [Flow Cytometry](#)
- [Cell Culture](#)

TBX6 Antibody (Center W158) - Images



TBX6 Antibody (Center W158) (Cat. #AP11675c) western blot analysis in HeLa cell line and mouse liver tissue lysates (35ug/lane). This demonstrates the TBX6 antibody detected the TBX6 protein (arrow).



TBX6 Antibody (Center W158) (Cat. #AP11675c) flow cytometric analysis of HeLa cells (right histogram) compared to a negative control cell (left histogram). FITC-conjugated goat-anti-rabbit secondary antibodies were used for the analysis.

TBX6 Antibody (Center W158) - Background

This gene is a member of a phylogenetically conserved family of genes that share a common DNA-binding domain, the T-box. T-box genes encode transcription factors involved in the regulation of developmental processes. Knockout studies in mice indicate that this gene is important for specification of paraxial mesoderm structures.

TBX6 Antibody (Center W158) - References

Fei, Q., et al. Spine 35(9):983-988(2010)
Ghebranious, N., et al. J. Bone Miner. Res. 23(10):1576-1583(2008)
Farin, H.F., et al. J. Biol. Chem. 282(35):25748-25759(2007)
Papapetrou, C., et al. Genomics 55(2):238-241(1999)
Yi, C.H., et al. Genomics 55(1):10-20(1999)