

OC90 Antibody (Center)
Affinity Purified Rabbit Polyclonal Antibody (Pab)
Catalog # AP11678c

Specification

OC90 Antibody (Center) - Product Information

Application	FC, WB,E
Primary Accession	O02509
Reactivity	Human
Host	Rabbit
Clonality	Polyclonal
Isotype	Rabbit IgG
Calculated MW	51728
Antigen Region	223-252

OC90 Antibody (Center) - Additional Information

Gene ID 729330

Other Names

Otoconin-90, Oc90, Phospholipase A2 homolog, OC90, PLA2L

Target/Specificity

This OC90 antibody is generated from rabbits immunized with a KLH conjugated synthetic peptide between 223-252 amino acids from the Central region of human OC90.

Dilution

FC~~1:10~50

WB~~1:1000

E~~Use at an assay dependent concentration.

Format

Purified polyclonal antibody supplied in PBS with 0.09% (W/V) sodium azide. This antibody is purified through a protein A column, followed by peptide affinity purification.

Storage

Maintain refrigerated at 2-8°C for up to 2 weeks. For long term storage store at -20°C in small aliquots to prevent freeze-thaw cycles.

Precautions

OC90 Antibody (Center) is for research use only and not for use in diagnostic or therapeutic procedures.

OC90 Antibody (Center) - Protein Information

Name OC90 ([HGNC:8100](#))

Synonyms PLA2L

Function Major protein of the otoconia, a calcium carbonate structure in the saccule and utricle of the ear. Together with OTOL1, acts as a scaffold for otoconia biomineralization: sequesters calcium and forms interconnecting fibrils between otoconia that are incorporated into the calcium crystal structure. Together with OTOL1, modulates calcite crystal morphology and growth kinetics. It is unlikely that this protein has phospholipase A2 activity.

Cellular Location

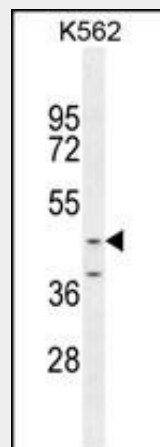
Secreted {ECO:0000250|UniProtKB:P81869}.

OC90 Antibody (Center) - Protocols

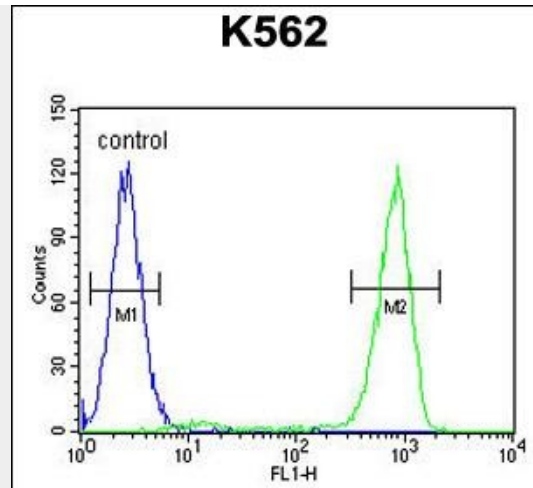
Provided below are standard protocols that you may find useful for product applications.

- [Western Blot](#)
- [Blocking Peptides](#)
- [Dot Blot](#)
- [Immunohistochemistry](#)
- [Immunofluorescence](#)
- [Immunoprecipitation](#)
- [Flow Cytometry](#)
- [Cell Culture](#)

OC90 Antibody (Center) - Images



OC90 Antibody (Center) (Cat. #AP11678c) western blot analysis in K562 cell line lysates (35ug/lane). This demonstrates the OC90 antibody detected the OC90 protein (arrow).



OC90 Antibody (Center) (Cat. #AP11678c) flow cytometric analysis of K562 cells (right histogram) compared to a negative control cell (left histogram). FITC-conjugated goat-anti-rabbit secondary antibodies were used for the analysis.

OC90 Antibody (Center) - Background

It is unlikely that this protein has phospholipase A2 activity.