

LSM7 Antibody (C-term)
Affinity Purified Rabbit Polyclonal Antibody (Pab)
Catalog # AP11679b**Specification**

LSM7 Antibody (C-term) - Product Information

Application	WB,E
Primary Accession	O9UK45
Other Accession	O9CQO8 , NP_057283.1
Reactivity	Human, Mouse
Host	Rabbit
Clonality	Polyclonal
Isotype	Rabbit IgG
Calculated MW	11602
Antigen Region	45-72

LSM7 Antibody (C-term) - Additional Information**Gene ID** 51690**Other Names**

U6 snRNA-associated Sm-like protein LSm7, LSM7

Target/Specificity

This LSM7 antibody is generated from rabbits immunized with a KLH conjugated synthetic peptide between 45-72 amino acids from the C-terminal region of human LSM7.

Dilution

WB~~1:1000

E~~Use at an assay dependent concentration.

Format

Purified polyclonal antibody supplied in PBS with 0.09% (W/V) sodium azide. This antibody is purified through a protein A column, followed by peptide affinity purification.

Storage

Maintain refrigerated at 2-8°C for up to 2 weeks. For long term storage store at -20°C in small aliquots to prevent freeze-thaw cycles.

Precautions

LSM7 Antibody (C-term) is for research use only and not for use in diagnostic or therapeutic procedures.

LSM7 Antibody (C-term) - Protein Information**Name** LSM7**Function** Plays a role in pre-mRNA splicing as component of the U4/U6- U5 tri-snRNP complex that

is involved in spliceosome assembly, and as component of the precatalytic spliceosome (spliceosome B complex) (PubMed:[28781166](#)). The heptameric LSM2-8 complex binds specifically to the 3'-terminal U-tract of U6 snRNA (PubMed:[10523320](#)).

Cellular Location

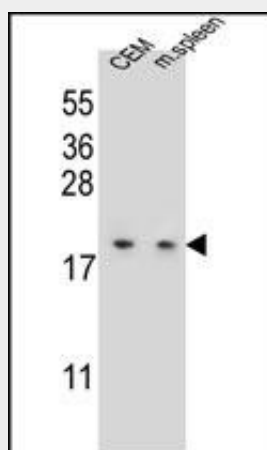
Nucleus

LSM7 Antibody (C-term) - Protocols

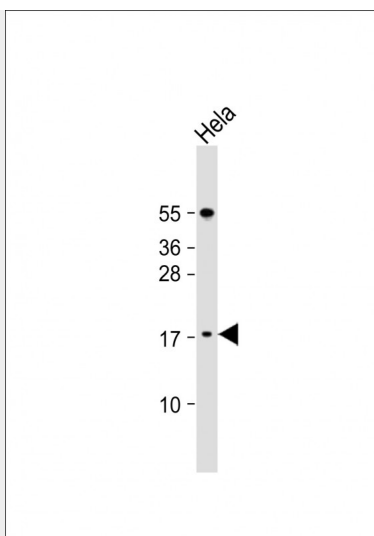
Provided below are standard protocols that you may find useful for product applications.

- [Western Blot](#)
- [Blocking Peptides](#)
- [Dot Blot](#)
- [Immunohistochemistry](#)
- [Immunofluorescence](#)
- [Immunoprecipitation](#)
- [Flow Cytometry](#)
- [Cell Culture](#)

LSM7 Antibody (C-term) - Images



LSM7 Antibody (C-term) (Cat. #AP11679b) western blot analysis in CEM cell line and mouse spleen tissue lysates (35ug/lane). This demonstrates the LSM7 antibody detected the LSM7 protein (arrow).



Anti-LSM7 Antibody (C-term) at 1:1000 dilution + HeLa whole cell lysate Lysates/proteins at 20 µg per lane. Secondary Goat Anti-Rabbit IgG, (H+L), Peroxidase conjugated at 1/10000 dilution. Predicted band size : 12 kDa Blocking/Dilution buffer: 5% NFDM/TBST.

LSM7 Antibody (C-term) - Background

Sm-like proteins were identified in a variety of organisms based on sequence homology with the Sm protein family (see SNRPD2; MIM 601061). Sm-like proteins contain the Sm sequence motif, which consists of 2 regions separated by a linker of variable length that folds as a loop. The Sm-like proteins are thought to form a stable heteromer present in tri-snRNP particles, which are important for pre-mRNA splicing.

LSM7 Antibody (C-term) - References

Lehner, B., et al. Genome Res. 14(7):1315-1323(2004)
Grimwood, J., et al. Nature 428(6982):529-535(2004)
Lehner, B., et al. Genomics 83(1):153-167(2004)
Ingelfinger, D., et al. RNA 8(12):1489-1501(2002)
Conte, N., et al. Oncogene 21(36):5619-5630(2002)