

ITIH1 Antibody (Center)
Affinity Purified Rabbit Polyclonal Antibody (Pab)
Catalog # AP11682c**Specification**

ITIH1 Antibody (Center) - Product Information

Application	FC, WB,E
Primary Accession	P19827
Other Accession	NP_002206.2 , NP_001159908.1 , NP_001159906.1
Reactivity	Human
Host	Rabbit
Clonality	Polyclonal
Isotype	Rabbit IgG
Calculated MW	101389
Antigen Region	606-635

ITIH1 Antibody (Center) - Additional Information**Gene ID** 3697**Other Names**

Inter-alpha-trypsin inhibitor heavy chain H1, ITI heavy chain H1, ITI-HC1, Inter-alpha-inhibitor heavy chain 1, Inter-alpha-trypsin inhibitor complex component III, Serum-derived hyaluronan-associated protein, SHAP, ITIH1, IGHEP1

Target/Specificity

This ITIH1 antibody is generated from rabbits immunized with a KLH conjugated synthetic peptide between 606-635 amino acids from the Central region of human ITIH1.

Dilution

FC~~1:10~50

WB~~1:1000

E~~Use at an assay dependent concentration.

Format

Purified polyclonal antibody supplied in PBS with 0.09% (W/V) sodium azide. This antibody is purified through a protein A column, followed by peptide affinity purification.

Storage

Maintain refrigerated at 2-8°C for up to 2 weeks. For long term storage store at -20°C in small aliquots to prevent freeze-thaw cycles.

Precautions

ITIH1 Antibody (Center) is for research use only and not for use in diagnostic or therapeutic procedures.

ITIH1 Antibody (Center) - Protein Information

Name ITIH1

Synonyms IGHEP1

Function May act as a carrier of hyaluronan in serum or as a binding protein between hyaluronan and other matrix protein, including those on cell surfaces in tissues to regulate the localization, synthesis and degradation of hyaluronan which are essential to cells undergoing biological processes.

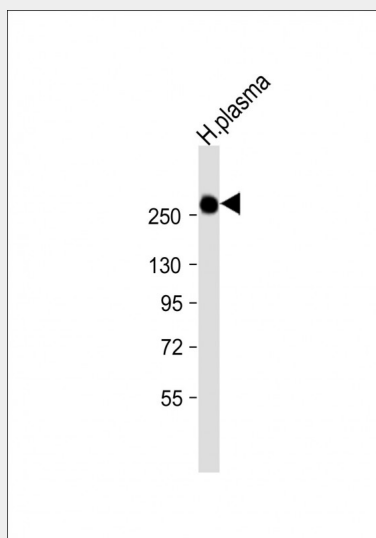
Cellular Location
Secreted.

ITIH1 Antibody (Center) - Protocols

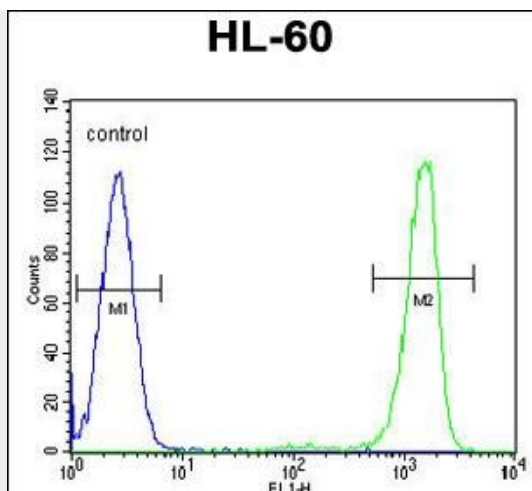
Provided below are standard protocols that you may find useful for product applications.

- [Western Blot](#)
- [Blocking Peptides](#)
- [Dot Blot](#)
- [Immunohistochemistry](#)
- [Immunofluorescence](#)
- [Immunoprecipitation](#)
- [Flow Cytometry](#)
- [Cell Culture](#)

ITIH1 Antibody (Center) - Images



Anti-ITIH1 Antibody (Center) at 1:1000 dilution + human plasma lysate Lysates/proteins at 20 µg per lane. Secondary Goat Anti-Rabbit IgG, (H+L), Peroxidase conjugated at 1/10000 dilution. Predicted band size : 101 kDa Blocking/Dilution buffer: 5% NFDM/TBST.



ITIH1 Antibody (Center) (Cat. #AP11682c) flow cytometric analysis of HL-60 cells (right histogram) compared to a negative control cell (left histogram). FITC-conjugated goat-anti-rabbit secondary antibodies were used for the analysis.

ITIH1 Antibody (Center) - Background

The protein encoded by this gene is the heavy chain of a serine protease inhibitor that may serve to carry hyaluronan in plasma. This gene is part of a cluster of similar genes on chromosome 3. Multiple transcript variants encoding different isoforms have been found for this gene.

ITIH1 Antibody (Center) - References

So, H.C., et al. Am. J. Med. Genet. B Neuropsychiatr. Genet. 153B (1), 103-113 (2010) :
 Scott, L.J., et al. Proc. Natl. Acad. Sci. U.S.A. 106(18):7501-7506(2009)
 Hamm, A., et al. BMC Cancer 8, 25 (2008) :
 Scarchilli, L., et al. J. Biol. Chem. 282(41):30161-30170(2007)
 Bunkenborg, J., et al. Proteomics 4(2):454-465(2004)