

PDE4B Antibody (Center)
Affinity Purified Rabbit Polyclonal Antibody (Pab)
Catalog # AP11684c

Specification

PDE4B Antibody (Center) - Product Information

Application	WB, FC,E
Primary Accession	Q07343
Other Accession	NP_002591.2 , NP_001032418.1
Reactivity	Human
Host	Rabbit
Clonality	Polyclonal
Isotype	Rabbit IgG
Calculated MW	83343
Antigen Region	189-217

PDE4B Antibody (Center) - Additional Information

Gene ID 5142

Other Names

cAMP-specific 3', 5'-cyclic phosphodiesterase 4B, DPDE4, PDE32, PDE4B, DPDE4

Target/Specificity

This PDE4B antibody is generated from rabbits immunized with a KLH conjugated synthetic peptide between 189-217 amino acids from the Central region of human PDE4B.

Dilution

WB~~1:1000

FC~~1:10~50

Format

Purified polyclonal antibody supplied in PBS with 0.09% (W/V) sodium azide. This antibody is purified through a protein A column, followed by peptide affinity purification.

Storage

Maintain refrigerated at 2-8°C for up to 2 weeks. For long term storage store at -20°C in small aliquots to prevent freeze-thaw cycles.

Precautions

PDE4B Antibody (Center) is for research use only and not for use in diagnostic or therapeutic procedures.

PDE4B Antibody (Center) - Protein Information

Name PDE4B ([HGNC:8781](#))

Synonyms DPDE4

Function Hydrolyzes the second messenger cAMP, which is a key regulator of many important physiological processes (PubMed:[15260978](#)). May be involved in mediating central nervous system effects of therapeutic agents ranging from antidepressants to antiasthmatic and anti-inflammatory agents.

Cellular Location

[Isoform PDE4B5]: Cytoplasm. Cell membrane

Tissue Location

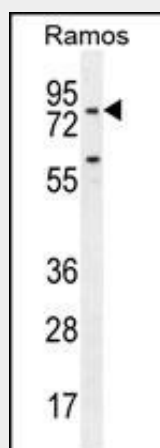
Expressed in brain, heart, lung and skeletal muscle (PubMed:17519386). Expressed in white blood cells (PubMed:8392015)

PDE4B Antibody (Center) - Protocols

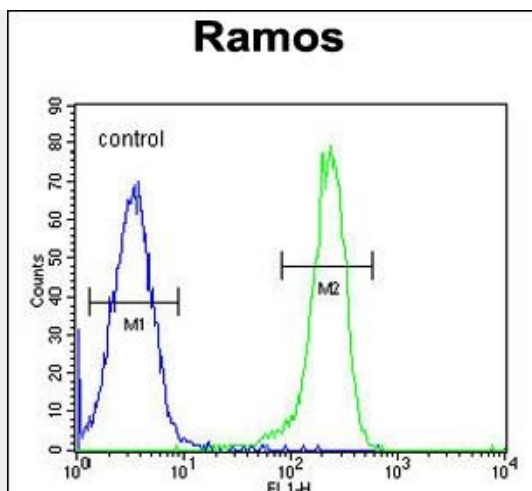
Provided below are standard protocols that you may find useful for product applications.

- [Western Blot](#)
- [Blocking Peptides](#)
- [Dot Blot](#)
- [Immunohistochemistry](#)
- [Immunofluorescence](#)
- [Immunoprecipitation](#)
- [Flow Cytometry](#)
- [Cell Culture](#)

PDE4B Antibody (Center) - Images



PDE4B Antibody (Center) (Cat. #AP11684c) western blot analysis in Ramos cell line lysates (35ug/lane). This demonstrates the PDE4B antibody detected the PDE4B protein (arrow).



PDE4B Antibody (Center) (Cat. #AP11684c) flow cytometric analysis of Ramos cells (right histogram) compared to a negative control cell (left histogram). FITC-conjugated goat-anti-rabbit secondary antibodies were used for the analysis.

PDE4B Antibody (Center) - Background

This gene is a member of the type IV, cyclic AMP (cAMP)-specific, cyclic nucleotide phosphodiesterase (PDE) family. Cyclic nucleotides are important second messengers that regulate and mediate a number of cellular responses to extracellular signals, such as hormones, light, and neurotransmitters. The cyclic nucleotide phosphodiesterases (PDEs) regulate the cellular concentrations of cyclic nucleotides and thereby play a role in signal transduction. This gene encodes a protein that specifically hydrolyzes cAMP. Altered activity of this protein has been associated with schizophrenia and bipolar affective disorder. Alternate transcriptional splice variants, encoding different isoforms, have been characterized.

PDE4B Antibody (Center) - References

Bailey, S.D., et al. Diabetes Care 33(10):2250-2253(2010)
Souza, R.P., et al. Int Clin Psychopharmacol 25(5):264-269(2010)
Rose, J.E., et al. Mol. Med. 16 (7-8), 247-253 (2010) :
Joslyn, G., et al. Alcohol. Clin. Exp. Res. 34(5):800-812(2010)
Talmud, P.J., et al. Am. J. Hum. Genet. 85(5):628-642(2009)