

PAP Antibody (Center)
Affinity Purified Rabbit Polyclonal Antibody (Pab)
Catalog # AP11691c

Specification

PAP Antibody (Center) - Product Information

Application	WB, IHC-P,E
Primary Accession	P51003
Other Accession	P25500 , NP_116021.2
Reactivity	Human
Predicted	Bovine
Host	Rabbit
Clonality	Polyclonal
Isotype	Rabbit IgG
Calculated MW	82843
Antigen Region	407-435

PAP Antibody (Center) - Additional Information

Gene ID 10914

Other Names

Poly(A) polymerase alpha, PAP-alpha, Polynucleotide adenylyltransferase alpha, PAPOLA, PAP

Target/Specificity

This PAP antibody is generated from rabbits immunized with a KLH conjugated synthetic peptide between 407-435 amino acids from the Central region of human PAP.

Dilution

WB~~1:1000

IHC-P~~1:50~100

Format

Purified polyclonal antibody supplied in PBS with 0.09% (W/V) sodium azide. This antibody is purified through a protein A column, followed by peptide affinity purification.

Storage

Maintain refrigerated at 2-8°C for up to 2 weeks. For long term storage store at -20°C in small aliquots to prevent freeze-thaw cycles.

Precautions

PAP Antibody (Center) is for research use only and not for use in diagnostic or therapeutic procedures.

PAP Antibody (Center) - Protein Information

Name PAPOLA

Synonyms PAP

Function Polymerase that creates the 3'-poly(A) tail of mRNA's. Also required for the endoribonucleolytic cleavage reaction at some polyadenylation sites. May acquire specificity through interaction with a cleavage and polyadenylation specificity factor (CPSF) at its C-terminus.

Cellular Location

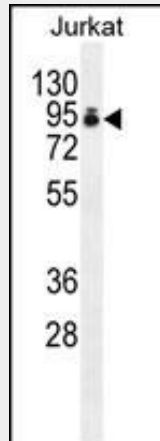
Cytoplasm. Nucleus. Note=The 90 kDa form is nuclear while the 100 kDa and the 106 kDa forms are both nuclear and cytoplasmic

PAP Antibody (Center) - Protocols

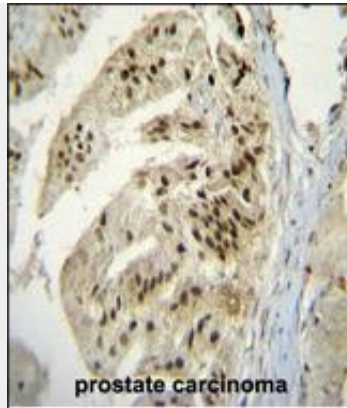
Provided below are standard protocols that you may find useful for product applications.

- [Western Blot](#)
- [Blocking Peptides](#)
- [Dot Blot](#)
- [Immunohistochemistry](#)
- [Immunofluorescence](#)
- [Immunoprecipitation](#)
- [Flow Cytometry](#)
- [Cell Culture](#)

PAP Antibody (Center) - Images



PAP Antibody (Center) (Cat. #AP11691c) western blot analysis in Jurkat cell line lysates (35ug/lane). This demonstrates the PAP antibody detected the PAP protein (arrow).



PAP Antibody (Center) (Cat. #AP11691c) immunohistochemistry analysis in formalin fixed and paraffin embedded human prostate carcinoma followed by peroxidase conjugation of the secondary antibody and DAB staining. This data demonstrates the use of PAP Antibody (Center) for immunohistochemistry. Clinical relevance has not been evaluated.

PAP Antibody (Center) - Background

Polymerase that creates the 3'-poly(A) tail of mRNA's. Also required for the endoribonucleolytic cleavage reaction at some polyadenylation sites. May acquire specificity through interaction with a cleavage and polyadenylation specificity factor (CPSF) at its C-terminus.

PAP Antibody (Center) - References

Rapti, A., et al. Mol. Cell. Biochem. 340 (1-2), 91-96 (2010) :
Nan, H., et al. J. Invest. Dermatol. 129(9):2250-2257(2009)
Olsen, J.V., et al. Cell 127(3):635-648(2006)
Dettwiler, S., et al. J. Biol. Chem. 279(34):35788-35797(2004)
Beausoleil, S.A., et al. Proc. Natl. Acad. Sci. U.S.A. 101(33):12130-12135(2004)