

JAZF1 Antibody (N-term)
Affinity Purified Rabbit Polyclonal Antibody (Pab)
Catalog # AP11693a

Specification

JAZF1 Antibody (N-term) - Product Information

Application	WB, FC,E
Primary Accession	Q86VZ6
Other Accession	Q80ZQ5 , NP_778231.2
Reactivity	Human, Mouse
Host	Rabbit
Clonality	Polyclonal
Isotype	Rabbit IgG
Antigen Region	22-49

JAZF1 Antibody (N-term) - Additional Information

Gene ID 221895

Other Names

Juxtaposed with another zinc finger protein 1, TAK1-interacting protein 27, Zinc finger protein 802, JAZF1, TIP27, ZNF802

Target/Specificity

This JAZF1 antibody is generated from rabbits immunized with a KLH conjugated synthetic peptide between 22-49 amino acids from the N-terminal region of human JAZF1.

Dilution

WB~~1:2000
FC~~1:10~50
E~~Use at an assay dependent concentration.

Format

Purified polyclonal antibody supplied in PBS with 0.09% (W/V) sodium azide. This antibody is purified through a protein A column, followed by peptide affinity purification.

Storage

Maintain refrigerated at 2-8°C for up to 2 weeks. For long term storage store at -20°C in small aliquots to prevent freeze-thaw cycles.

Precautions

JAZF1 Antibody (N-term) is for research use only and not for use in diagnostic or therapeutic procedures.

JAZF1 Antibody (N-term) - Protein Information

Name JAZF1 ([HGNC:28917](#))

Synonyms TIP27, ZNF802

Function Acts as a transcriptional corepressor of orphan nuclear receptor NR2C2 (PubMed:[15302918](#)). Inhibits expression of the gluconeogenesis enzyme PCK2 through inhibition of NR2C2 activity (By similarity). Also involved in transcriptional activation of NAMPT by promoting expression of PPARA and PPARG (By similarity). Plays a role in lipid metabolism by suppressing lipogenesis, increasing lipolysis and decreasing lipid accumulation in adipose tissue (By similarity). Plays a role in glucose homeostasis by improving glucose metabolism and insulin sensitivity (By similarity).

Cellular Location

Nucleus.

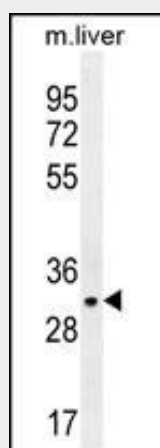
Tissue Location

Highest expression in testis with moderate levels in colon, placenta, prostate and ovary and low levels in brain, spleen, liver and small intestine.

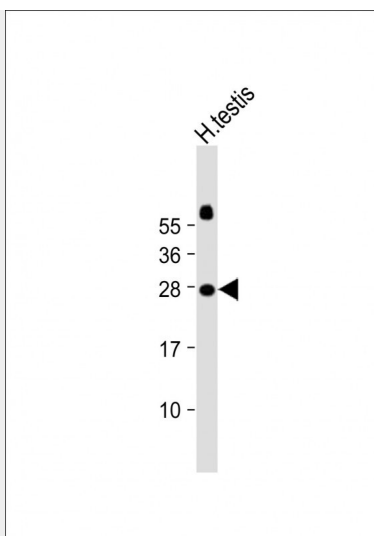
JAZF1 Antibody (N-term) - Protocols

Provided below are standard protocols that you may find useful for product applications.

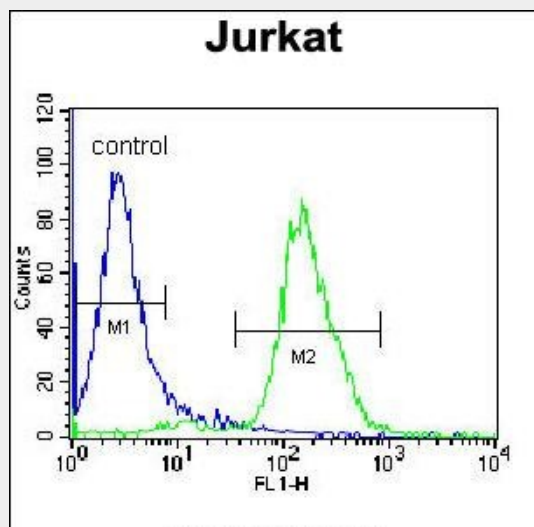
- [Western Blot](#)
- [Blocking Peptides](#)
- [Dot Blot](#)
- [Immunohistochemistry](#)
- [Immunofluorescence](#)
- [Immunoprecipitation](#)
- [Flow Cytometry](#)
- [Cell Culture](#)

JAZF1 Antibody (N-term) - Images

JAZF1 Antibody (N-term) (Cat. #AP11693a) western blot analysis in mouse liver tissue lysates (35ug/lane). This demonstrates the JAZF1 antibody detected the JAZF1 protein (arrow).



Anti-JAZF1 Antibody (C-Term) at 1:2000 dilution + Human testis lysate Lysates/proteins at 20 µg per lane. Secondary Goat Anti-Rabbit IgG, (H+L), Peroxidase conjugated at 1/10000 dilution. Predicted band size : 27 kDa Blocking/Dilution buffer: 5% NFDM/TBST.



JAZF1 Antibody (N-term) (Cat. #AP11693a) flow cytometric analysis of Jurkat cells (right histogram) compared to a negative control cell (left histogram). FITC-conjugated donkey-anti-rabbit secondary antibodies were used for the analysis.

JAZF1 Antibody (N-term) - Background

This gene encodes a nuclear protein with three C2H2-type zinc fingers, and functions as a transcriptional repressor. Chromosomal aberrations involving this gene are associated with endometrial stromal tumors. Alternatively spliced variants which encode different protein isoforms have been described; however, not all variants have been fully characterized

JAZF1 Antibody (N-term) - References

Andersson, E.A., et al. Diabetologia 53(9):1908-1916(2010)
Liu, H., et al. Prostate (2010) In press :
Voight, B.F., et al. Nat. Genet. 42(7):579-589(2010)
Gallagher, D.J., et al. Clin. Cancer Res. 16(10):2819-2832(2010)

Zhao, J., et al. BMC Med. Genet. 11, 96 (2010) :