

BRUNOL6 Antibody (N-term)
Affinity Purified Rabbit Polyclonal Antibody (Pab)
Catalog # AP11714a**Specification**

BRUNOL6 Antibody (N-term) - Product Information

Application	WB, IHC-P,E
Primary Accession	O96J87
Other Accession	O7TN33 , NP_001166155.1 , NP_443072.3
Reactivity	Human, Mouse
Host	Rabbit
Clonality	Polyclonal
Isotype	Rabbit IgG
Calculated MW	50477
Antigen Region	46-74

BRUNOL6 Antibody (N-term) - Additional Information**Gene ID** 60677**Other Names**

CUGBP Elav-like family member 6, CELF-6, Bruno-like protein 6, CUG-BP- and ETR-3-like factor 6, RNA-binding protein BRUNOL-6, CELF6, BRUNOL6

Target/Specificity

This BRUNOL6 antibody is generated from rabbits immunized with a KLH conjugated synthetic peptide between 46-74 amino acids from the N-terminal region of human BRUNOL6.

Dilution

WB~~1:1000

IHC-P~~1:50~100

E~~Use at an assay dependent concentration.

Format

Purified polyclonal antibody supplied in PBS with 0.09% (W/V) sodium azide. This antibody is purified through a protein A column, followed by peptide affinity purification.

Storage

Maintain refrigerated at 2-8°C for up to 2 weeks. For long term storage store at -20°C in small aliquots to prevent freeze-thaw cycles.

Precautions

BRUNOL6 Antibody (N-term) is for research use only and not for use in diagnostic or therapeutic procedures.

BRUNOL6 Antibody (N-term) - Protein Information**Name** CELF6

Synonyms BRUNOL6

Function RNA-binding protein implicated in the regulation of pre-mRNA alternative splicing. Mediates exon inclusion and/or exclusion in pre- mRNA that are subject to tissue-specific and developmentally regulated alternative splicing. Specifically activates exon 5 inclusion of TNNT2 in a muscle-specific splicing enhancer (MSE)-dependent manner. Promotes also exon exclusion of INSR pre-mRNA.

Cellular Location

Nucleus. Cytoplasm.

Tissue Location

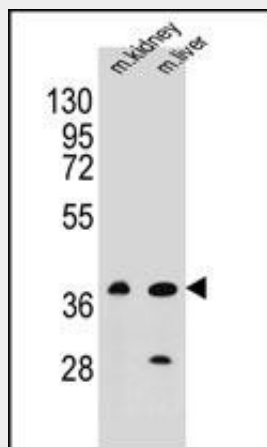
Expressed mainly in kidney, brain and testis and present in other tissues albeit at lower levels. Also expressed in fetal kidney.

BRUNOL6 Antibody (N-term) - Protocols

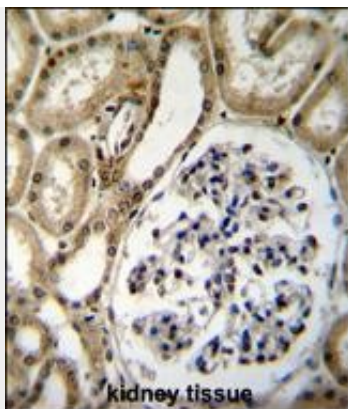
Provided below are standard protocols that you may find useful for product applications.

- [Western Blot](#)
- [Blocking Peptides](#)
- [Dot Blot](#)
- [Immunohistochemistry](#)
- [Immunofluorescence](#)
- [Immunoprecipitation](#)
- [Flow Cytometry](#)
- [Cell Culture](#)

BRUNOL6 Antibody (N-term) - Images



BRUNOL6 Antibody (N-term) (Cat. #AP11714a) western blot analysis in mouse kidney,liver tissue lysates (35ug/lane).This demonstrates the BRUNOL6 antibody detected the BRUNOL6 protein (arrow).



BRUNOL6 Antibody (N-term) (Cat. #AP11714a) immunohistochemistry analysis in formalin fixed and paraffin embedded human kidney tissue followed by peroxidase conjugation of the secondary antibody and DAB staining. This data demonstrates the use of BRUNOL6 Antibody (N-term) for immunohistochemistry. Clinical relevance has not been evaluated.

BRUNOL6 Antibody (N-term) - Background

Members of the CELF/BRUNOL protein family contain two N-terminal RNA recognition motif (RRM) domains, one C-terminal RRM domain, and a divergent segment of 160-230 aa between the second and third RRM domains. Members of this protein family regulate pre-mRNA alternative splicing and may also be involved in mRNA editing, and translation. Multiple alternatively spliced transcript variants encoding different isoforms have been identified in this gene.

BRUNOL6 Antibody (N-term) - References

Ladd, A.N., et al. J. Biol. Chem. 279(17):17756-17764(2004)
Wistow, G., et al. Mol. Vis. 8, 205-220 (2002) :
Good, P.J., et al. J. Biol. Chem. 275(37):28583-28592(2000)