

**SHQ1 Antibody (N-term)**  
**Affinity Purified Rabbit Polyclonal Antibody (Pab)**  
**Catalog # AP11715a**

**Specification**

---

**SHQ1 Antibody (N-term) - Product Information**

Application	WB, IHC-P,E
Primary Accession	<a href="#">Q6PI26</a>
Other Accession	<a href="#">Q7TMX5</a> , <a href="#">Q3MHH1</a> , <a href="#">NP_060600.2</a>
Reactivity	Human, Mouse
Predicted	Bovine
Host	Rabbit
Clonality	Polyclonal
Isotype	Rabbit IgG
Antigen Region	58-86

**SHQ1 Antibody (N-term) - Additional Information**

**Gene ID** 55164

**Other Names**

Protein SHQ1 homolog, SHQ1

**Target/Specificity**

This SHQ1 antibody is generated from rabbits immunized with a KLH conjugated synthetic peptide between 58-86 amino acids from the N-terminal region of human SHQ1.

**Dilution**

WB~~1:1000

IHC-P~~1:50~100

E~~Use at an assay dependent concentration.

**Format**

Purified polyclonal antibody supplied in PBS with 0.09% (W/V) sodium azide. This antibody is purified through a protein A column, followed by peptide affinity purification.

**Storage**

Maintain refrigerated at 2-8°C for up to 2 weeks. For long term storage store at -20°C in small aliquots to prevent freeze-thaw cycles.

**Precautions**

SHQ1 Antibody (N-term) is for research use only and not for use in diagnostic or therapeutic procedures.

**SHQ1 Antibody (N-term) - Protein Information**

**Name** SHQ1

**Function** Required for the quantitative accumulation of H/ACA ribonucleoproteins (RNPs), including telomerase, probably through the stabilization of DKC1, from the time of its synthesis until its association with NOP10, NHP2, and NAF1 at the nascent H/ACA RNA.

**Cellular Location**

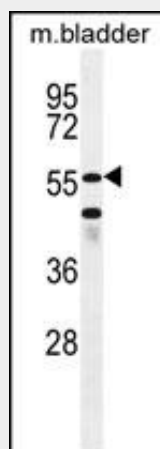
Cytoplasm, cytosol. Nucleus, nucleoplasm. Note=May at least partially shuttle between cytosol and nucleoplasm. In the nucleoplasm, exhibits a granular pattern, but is excluded from nucleoli and Cajal bodies. Absent from most H/ACA-box RNA transcription sites

**SHQ1 Antibody (N-term) - Protocols**

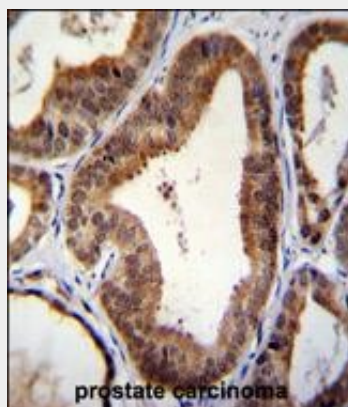
Provided below are standard protocols that you may find useful for product applications.

- [Western Blot](#)
- [Blocking Peptides](#)
- [Dot Blot](#)
- [Immunohistochemistry](#)
- [Immunofluorescence](#)
- [Immunoprecipitation](#)
- [Flow Cytometry](#)
- [Cell Culture](#)

**SHQ1 Antibody (N-term) - Images**



SHQ1 Antibody (N-term) (Cat. #AP11715a) western blot analysis in mouse bladder tissue lysates (35ug/lane). This demonstrates the SHQ1 antibody detected the SHQ1 protein (arrow).



SHQ1 Antibody (N-term) (Cat. #AP11715a) immunohistochemistry analysis in formalin fixed and paraffin embedded human prostate carcinoma followed by peroxidase conjugation of the secondary antibody and DAB staining. This data demonstrates the use of SHQ1 Antibody (N-term) for immunohistochemistry. Clinical relevance has not been evaluated.

**SHQ1 Antibody (N-term) - References**

Grozdanov, P.N., et al. RNA 15(6):1188-1197(2009)