

**NKX1-2 Antibody (N-term)**  
**Affinity Purified Rabbit Polyclonal Antibody (Pab)**  
**Catalog # AP11745a****Specification**

---

**NKX1-2 Antibody (N-term) - Product Information**

Application	FC, WB,E
Primary Accession	<a href="#">Q9UD57</a>
Other Accession	<a href="#">XP_002347203.1</a> , <a href="#">XP_002343058.1</a> , <a href="#">XP_002344570.1</a>
Reactivity	Human
Host	Rabbit
Clonality	Polyclonal
Isotype	Rabbit IgG
Calculated MW	32381
Antigen Region	1-2

**NKX1-2 Antibody (N-term) - Additional Information****Gene ID** 390010**Other Names**

NK1 transcription factor-related protein 2, Homeobox protein SAX-1, NKX-11, NKX1-2, C10orf121, NKX11

**Target/Specificity**

This NKX1-2 antibody is generated from rabbits immunized with a KLH conjugated synthetic peptide between 46-74 amino acids from the N-terminal region of human NKX1-2.

**Dilution**

FC~~1:10~50

WB~~1:1000

E~~Use at an assay dependent concentration.

**Format**

Purified polyclonal antibody supplied in PBS with 0.09% (W/V) sodium azide. This antibody is purified through a protein A column, followed by peptide affinity purification.

**Storage**

Maintain refrigerated at 2-8°C for up to 2 weeks. For long term storage store at -20°C in small aliquots to prevent freeze-thaw cycles.

**Precautions**

NKX1-2 Antibody (N-term) is for research use only and not for use in diagnostic or therapeutic procedures.

**NKX1-2 Antibody (N-term) - Protein Information**

**Name** NKX1-2

**Synonyms** C10orf121, NKX1.1

**Function** Transcriptional repressor. May play a role in early development as a Wnt/beta-catenin effector, hence controlling pluripotency and preimplantation development of embryonic stem cells. May promote adipogenesis in mesenchymal stem cells, possibly by inhibiting the expression of the antiadipogenic factor NR2F2. May inhibit osteoblastogenic differentiation.

**Cellular Location**

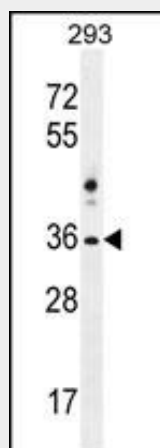
Nucleus {ECO:0000250|UniProtKB:P42580}. Nucleus, nucleolus {ECO:0000250|UniProtKB:P42580}. Note=Specifically localizes to the nucleoli of oocytes and preimplantation embryos {ECO:0000250|UniProtKB:P42580}

**NKX1-2 Antibody (N-term) - Protocols**

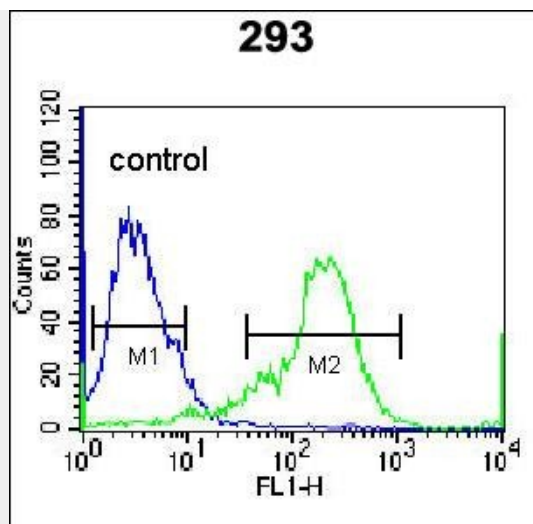
Provided below are standard protocols that you may find useful for product applications.

- [Western Blot](#)
- [Blocking Peptides](#)
- [Dot Blot](#)
- [Immunohistochemistry](#)
- [Immunofluorescence](#)
- [Immunoprecipitation](#)
- [Flow Cytometry](#)
- [Cell Culture](#)

**NKX1-2 Antibody (N-term) - Images**



NKX1-2 Antibody (N-term) (Cat. #AP11745a) western blot analysis in 293 cell line lysates (35ug/lane). This demonstrates the NKX1-2 antibody detected the NKX1-2 protein (arrow).



NKX1-2 Antibody (N-term) (Cat. #AP11745a) flow cytometric analysis of 293 cells (right histogram) compared to a negative control cell (left histogram). FITC-conjugated goat-anti-rabbit secondary antibodies were used for the analysis.

#### **NKX1-2 Antibody (N-term) - Background**

NKX1-2 may function in cell specification, particularly in the CNS (By similarity).