

CCDC36 Antibody (C-term)
Affinity Purified Rabbit Polyclonal Antibody (Pab)
Catalog # AP11750b

Specification

CCDC36 Antibody (C-term) - Product Information

Application	WB, IF, IHC-P,E
Primary Accession	Q8IYA8
Other Accession	NP_001128669.1 , NP_835467.2
Reactivity	Human
Host	Rabbit
Clonality	Polyclonal
Isotype	Rabbit IgG
Calculated MW	66343
Antigen Region	422-450

CCDC36 Antibody (C-term) - Additional Information

Gene ID 339834

Other Names

Coiled-coil domain-containing protein 36, Cancer/testis antigen 74, CT74, CCDC36

Target/Specificity

This CCDC36 antibody is generated from rabbits immunized with a KLH conjugated synthetic peptide between 422-450 amino acids from the C-terminal region of human CCDC36.

Dilution

WB~~1:1000

IF~~1:10~50

IHC-P~~1:10~50

E~~Use at an assay dependent concentration.

Format

Purified polyclonal antibody supplied in PBS with 0.09% (W/V) sodium azide. This antibody is purified through a protein A column, followed by peptide affinity purification.

Storage

Maintain refrigerated at 2-8°C for up to 2 weeks. For long term storage store at -20°C in small aliquots to prevent freeze-thaw cycles.

Precautions

CCDC36 Antibody (C-term) is for research use only and not for use in diagnostic or therapeutic procedures.

CCDC36 Antibody (C-term) - Protein Information

Name IHO1 {ECO:0000303|PubMed:27723721, ECO:0000312|HGNC:HGNC:27945}

Function Required for DNA double-strand breaks (DSBs) formation in unsynapsed regions during meiotic recombination. Probably acts by forming a complex with MEI4 and REC114, which activates DSBs formation in unsynapsed regions, an essential step to ensure completion of synapsis. Not required for HORMAD1 functions in pairing-independent synaptonemal complex formation, ATR recruitment to unsynapsed axes, meiotic silencing of unsynapsed chromatin (MSUC) or meiotic surveillance.

Cellular Location

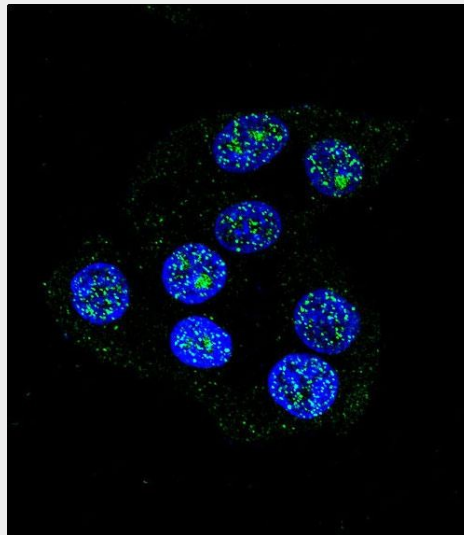
Chromosome {ECO:0000250|UniProtKB:Q6PDM4}. Note=Specifically localizes to unsynapsed chromosomal regions during meiosis. {ECO:0000250|UniProtKB:Q6PDM4}

CCDC36 Antibody (C-term) - Protocols

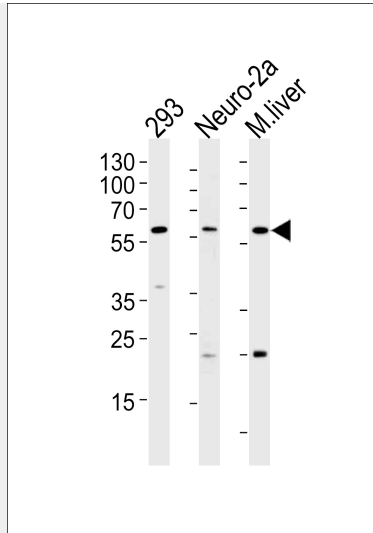
Provided below are standard protocols that you may find useful for product applications.

- [Western Blot](#)
- [Blocking Peptides](#)
- [Dot Blot](#)
- [Immunohistochemistry](#)
- [Immunofluorescence](#)
- [Immunoprecipitation](#)
- [Flow Cytometry](#)
- [Cell Culture](#)

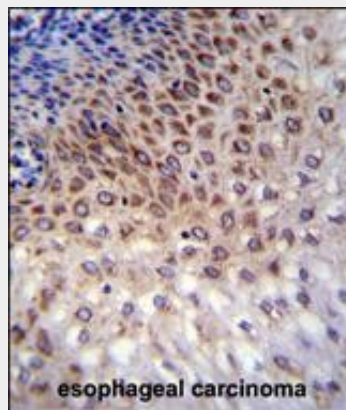
CCDC36 Antibody (C-term) - Images



Confocal immunofluorescent analysis of CCDC36 Antibody (C-term)(Cat#AP11750b) with 293 cell followed by Alexa Fluor 488-conjugated goat anti-rabbit IgG (green). DAPI was used to stain the cell nuclear (blue).



Western blot analysis of lysates from 293, Neuro-2a cell line and mouse liver tissue (from left to right), using CCDC36 Antibody (C-term) (Cat. #AP11750b). AP11750b was diluted at 1:1000 at each lane. A goat anti-rabbit IgG H&L (HRP) at 1:5000 dilution was used as the secondary antibody. Lysates at 35ug per lane.



CCDC36 Antibody (C-term) (Cat. #AP11750b) immunohistochemistry analysis in formalin fixed and paraffin embedded human esophageal carcinoma followed by peroxidase conjugation of the secondary antibody and DAB staining. This data demonstrates the use of CCDC36 Antibody (C-term) for immunohistochemistry. Clinical relevance has not been evaluated.

CCDC36 Antibody (C-term) - References

Strausberg, R.L., et al. Proc. Natl. Acad. Sci. U.S.A. 99(26):16899-16903(2002)