

PALM3 Antibody (C-term)
Affinity Purified Rabbit Polyclonal Antibody (Pab)
Catalog # AP11758b

Specification

PALM3 Antibody (C-term) - Product Information

Application	WB, FC, IHC-P,E
Primary Accession	A6NDB9
Other Accession	NP_001138500.1
Reactivity	Human
Host	Rabbit
Clonality	Polyclonal
Isotype	Rabbit IgG
Antigen Region	546-574

PALM3 Antibody (C-term) - Additional Information

Gene ID 342979

Other Names

Paralemmin-3, PALM3

Target/Specificity

This PALM3 antibody is generated from rabbits immunized with a KLH conjugated synthetic peptide between 546-574 amino acids from the C-terminal region of human PALM3.

Dilution

WB~~1:1000
FC~~1:10~50
IHC-P~~1:10~50
E~~Use at an assay dependent concentration.

Format

Purified polyclonal antibody supplied in PBS with 0.09% (W/V) sodium azide. This antibody is purified through a protein A column, followed by peptide affinity purification.

Storage

Maintain refrigerated at 2-8°C for up to 2 weeks. For long term storage store at -20°C in small aliquots to prevent freeze-thaw cycles.

Precautions

PALM3 Antibody (C-term) is for research use only and not for use in diagnostic or therapeutic procedures.

PALM3 Antibody (C-term) - Protein Information

Name PALM3

Function ATP-binding protein, which may act as a adapter in the Toll- like receptor (TLR) signaling.

Cellular Location

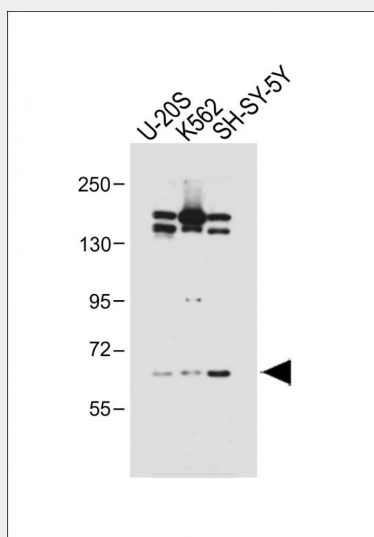
Cytoplasm. Cell membrane; Lipid-anchor

PALM3 Antibody (C-term) - Protocols

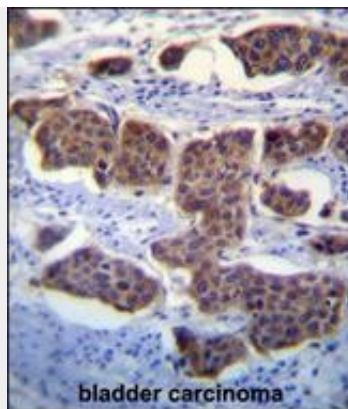
Provided below are standard protocols that you may find useful for product applications.

- [Western Blot](#)
- [Blocking Peptides](#)
- [Dot Blot](#)
- [Immunohistochemistry](#)
- [Immunofluorescence](#)
- [Immunoprecipitation](#)
- [Flow Cytometry](#)
- [Cell Culture](#)

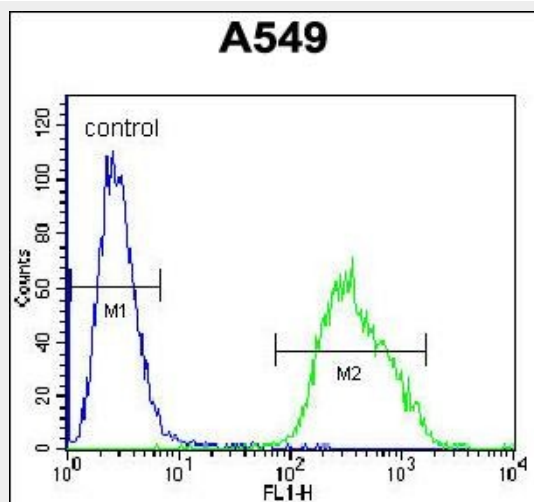
PALM3 Antibody (C-term) - Images



All lanes : Anti-PALM3 Antibody (C-term) at 1:1000 dilution Lane 1: U-20S whole cell lysate Lane 2: K562 whole cell lysate Lane 3: SH-SY-5Y whole cell lysate Lysates/proteins at 20 µg per lane. Secondary Goat Anti-Rabbit IgG, (H+L), Peroxidase conjugated at 1/10000 dilution. Predicted band size : 72 kDa Blocking/Dilution buffer: 5% NFDM/TBST.



PALM3 Antibody (C-term) (Cat. #AP11758b) immunohistochemistry analysis in formalin fixed and paraffin embedded human bladder carcinoma followed by peroxidase conjugation of the secondary antibody and DAB staining. This data demonstrates the use of PALM3 Antibody (C-term) for immunohistochemistry. Clinical relevance has not been evaluated.



PALM3 Antibody (C-term) (Cat. #AP11758b) flow cytometric analysis of A549 cells (right histogram) compared to a negative control cell (left histogram). FITC-conjugated goat-anti-rabbit secondary antibodies were used for the analysis.

PALM3 Antibody (C-term) - Background

PALM3 is a ATP-binding protein (By similarity).

PALM3 Antibody (C-term) - References

Grimwood, J., et al. Nature 428(6982):529-535(2004)

PALM3 Antibody (C-term) - Citations

- [Extensive quantitative remodeling of the proteome between normal colon tissue and adenocarcinoma.](#)