

LRP12 Antibody (C-term)
Affinity Purified Rabbit Polyclonal Antibody (Pab)
Catalog # AP11761b

Specification

LRP12 Antibody (C-term) - Product Information

Application	WB, FC, IF, IHC-P,E
Primary Accession	Q9Y561
Other Accession	Q8BUJ9 , Q9BE74 , NP_038465.1
Reactivity	Human
Predicted	Monkey, Mouse
Host	Rabbit
Clonality	Polyclonal
Isotype	Rabbit IgG
Calculated MW	94984
Antigen Region	635-662

LRP12 Antibody (C-term) - Additional Information

Gene ID 29967

Other Names

Low-density lipoprotein receptor-related protein 12, LRP-12, Suppressor of tumorigenicity 7 protein, LRP12, ST7

Target/Specificity

This LRP12 antibody is generated from rabbits immunized with a KLH conjugated synthetic peptide between 635-662 amino acids from the C-terminal region of human LRP12.

Dilution

WB~~1:1000
FC~~1:10~50
IF~~1:10~50
IHC-P~~1:10~50
E~~Use at an assay dependent concentration.

Format

Purified polyclonal antibody supplied in PBS with 0.09% (W/V) sodium azide. This antibody is purified through a protein A column, followed by peptide affinity purification.

Storage

Maintain refrigerated at 2-8°C for up to 2 weeks. For long term storage store at -20°C in small aliquots to prevent freeze-thaw cycles.

Precautions

LRP12 Antibody (C-term) is for research use only and not for use in diagnostic or therapeutic procedures.

LRP12 Antibody (C-term) - Protein Information

Name LRP12

Synonyms ST7

Function Probable receptor, which may be involved in the internalization of lipophilic molecules and/or signal transduction. May act as a tumor suppressor.

Cellular Location

Membrane; Single- pass type I membrane protein. Membrane, coated pit

Tissue Location

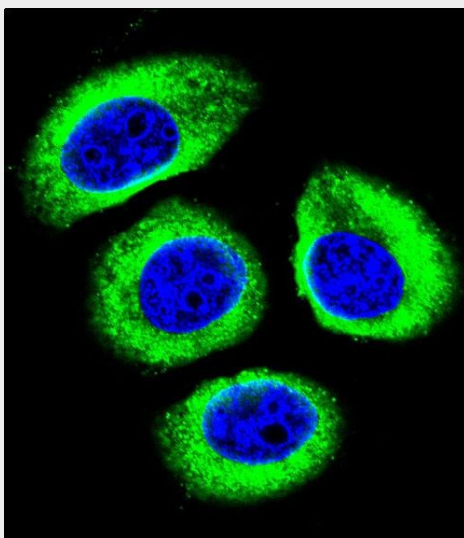
Widely expressed in heart, skeletal muscle, brain, lung, placenta and pancreas, but not in tissues consisting of a large number of epithelial cells, such as liver and kidney. Expressed at very low levels in a number of tumor-derived cell lines

LRP12 Antibody (C-term) - Protocols

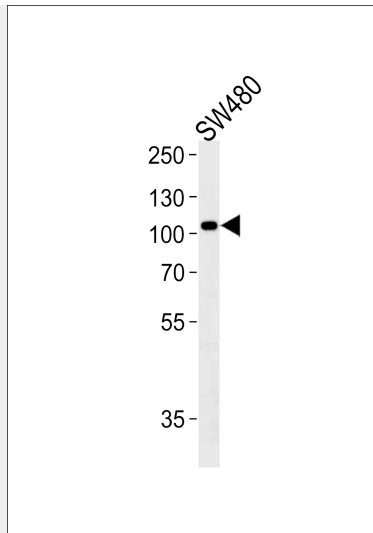
Provided below are standard protocols that you may find useful for product applications.

- [Western Blot](#)
- [Blocking Peptides](#)
- [Dot Blot](#)
- [Immunohistochemistry](#)
- [Immunofluorescence](#)
- [Immunoprecipitation](#)
- [Flow Cytometry](#)
- [Cell Culture](#)

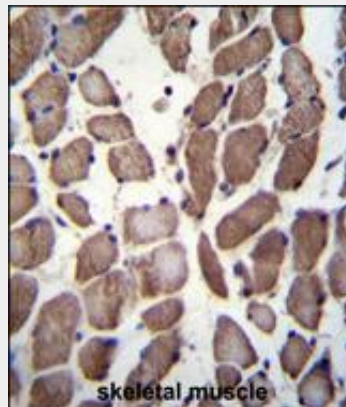
LRP12 Antibody (C-term) - Images



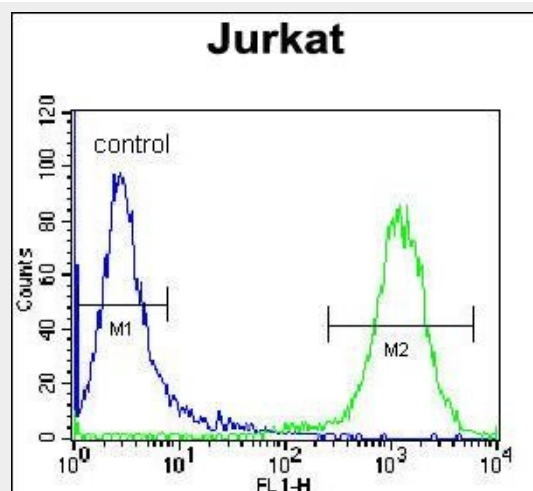
Confocal immunofluorescent analysis of LRP12 Antibody (C-term)(Cat#AP11761b) with U-251MG cell followed by Alexa Fluor 488-conjugated goat anti-rabbit IgG (green). DAPI was used to stain the cell nuclear (blue).



Western blot analysis of lysate from SW480 cell line, using LRP12 Antibody (C-term) (Cat. #AP11761b). AP11761b was diluted at 1:1000 at each lane. A goat anti-rabbit IgG H&L (HRP) at 1:5000 dilution was used as the secondary antibody. Lysate at 35 µg per lane.



LRP12 Antibody (C-term) (Cat. #AP11761b) immunohistochemistry analysis in formalin fixed and paraffin embedded human skeletal muscle followed by peroxidase conjugation of the secondary antibody and DAB staining. This data demonstrates the use of LRP12 Antibody (C-term) for immunohistochemistry. Clinical relevance has not been evaluated.



LRP12 Antibody (C-term) (Cat. #AP11761b) flow cytometric analysis of Jurkat cells (right histogram) compared to a negative control cell (left histogram). FITC-conjugated

donkey-anti-rabbit secondary antibodies were used for the analysis.

LRP12 Antibody (C-term) - Background

This gene encodes a member of the low-density lipoprotein receptor related protein family. The product of this gene is a transmembrane protein that is differentially expressed in many cancer cells. Alternate splicing results in multiple transcript variants.

LRP12 Antibody (C-term) - References

Garnis, C., et al. Oncogene 23(14):2582-2586(2004)
Battle, M.A., et al. Biochemistry 42(24):7270-7282(2003)
Qing, J., et al. Oncogene 18(2):335-342(1999)