

**PLEKHA4 Antibody (N-term)**  
**Affinity Purified Rabbit Polyclonal Antibody (Pab)**  
**Catalog # AP11773a**

**Specification**

---

**PLEKHA4 Antibody (N-term) - Product Information**

Application	WB, IHC-P, FC,E
Primary Accession	<a href="#">Q9H4M7</a>
Other Accession	<a href="#">NP_065955.2</a> , <a href="#">NP_001154826.1</a>
Reactivity	Human
Host	Rabbit
Clonality	Polyclonal
Isotype	Rabbit IgG
Calculated MW	85401
Antigen Region	21-50

**PLEKHA4 Antibody (N-term) - Additional Information**

**Gene ID** 57664

**Other Names**

Pleckstrin homology domain-containing family A member 4, PH domain-containing family A member 4, Phosphoinositol 3-phosphate-binding protein 1, PEPP-1, PLEKHA4, PEPP1

**Target/Specificity**

This PLEKHA4 antibody is generated from rabbits immunized with a KLH conjugated synthetic peptide between 21-50 amino acids from the N-terminal region of human PLEKHA4.

**Dilution**

WB~~1:1000  
IHC-P~~1:10~50  
FC~~1:10~50

**Format**

Purified polyclonal antibody supplied in PBS with 0.09% (W/V) sodium azide. This antibody is purified through a protein A column, followed by peptide affinity purification.

**Storage**

Maintain refrigerated at 2-8°C for up to 2 weeks. For long term storage store at -20°C in small aliquots to prevent freeze-thaw cycles.

**Precautions**

PLEKHA4 Antibody (N-term) is for research use only and not for use in diagnostic or therapeutic procedures.

**PLEKHA4 Antibody (N-term) - Protein Information**

**Name** PLEKHA4

**Synonyms** PEPP1

**Function** Binds specifically to phosphatidylinositol 3-phosphate (PtdIns3P), but not to other phosphoinositides.

**Cellular Location**

Cytoplasm. Membrane; Peripheral membrane protein

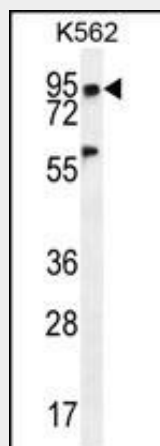
**Tissue Location**

Highly expressed in melanoma. Detected at low levels in heart, skeletal muscle, kidney, liver and small intestine

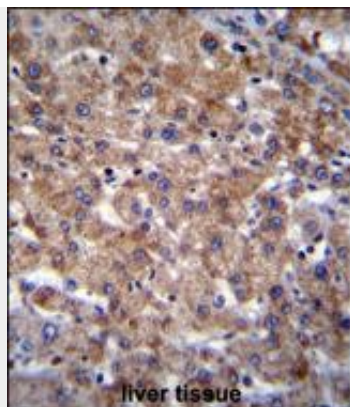
**PLEKHA4 Antibody (N-term) - Protocols**

Provided below are standard protocols that you may find useful for product applications.

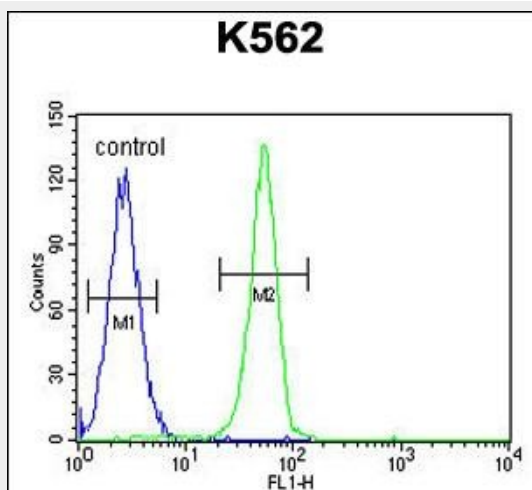
- [Western Blot](#)
- [Blocking Peptides](#)
- [Dot Blot](#)
- [Immunohistochemistry](#)
- [Immunofluorescence](#)
- [Immunoprecipitation](#)
- [Flow Cytometry](#)
- [Cell Culture](#)

**PLEKHA4 Antibody (N-term) - Images**

PLEKHA4 Antibody (N-term) (Cat. #AP11773a) western blot analysis in K562 cell line lysates (35ug/lane). This demonstrates the PLEKHA4 antibody detected the PLEKHA4 protein (arrow).



PLEKHA4 Antibody (N-term) (Cat. #AP11773a) immunohistochemistry analysis in formalin fixed and paraffin embedded human liver tissue followed by peroxidase conjugation of the secondary antibody and DAB staining. This data demonstrates the use of PLEKHA4 Antibody (N-term) for immunohistochemistry. Clinical relevance has not been evaluated.



PLEKHA4 Antibody (N-term) (Cat. #AP11773a) flow cytometric analysis of K562 cells (right histogram) compared to a negative control cell (left histogram). FITC-conjugated goat-anti-rabbit secondary antibodies were used for the analysis.

#### **PLEKHA4 Antibody (N-term) - Background**

PLEKHA4 binds specifically to phosphatidylinositol-3-phosphate (PtdIns3P), but not to other phosphoinositides.

#### **PLEKHA4 Antibody (N-term) - References**

Stelzl, U., et al. Cell 122(6):957-968(2005)  
Dowler, S., et al. Biochem. J. 351 (PT 1), 19-31 (2000) :