

LCMT2 Antibody (Center H450)
Affinity Purified Rabbit Polyclonal Antibody (Pab)
Catalog # AP11778c**Specification**

LCMT2 Antibody (Center H450) - Product Information

Application	WB,E
Primary Accession	O60294
Other Accession	NP_055608.2
Reactivity	Human
Host	Rabbit
Clonality	Polyclonal
Isotype	Rabbit IgG
Antigen Region	435-463

LCMT2 Antibody (Center H450) - Additional Information**Gene ID** 9836**Other Names**

tRNA wybutosine-synthesizing protein 4, tRNA yW-synthesizing protein 4, Leucine carboxyl methyltransferase 2, tRNA(Phe)
(7-(3-amino-3-(methoxycarbonyl)propyl)wyosine(37)-N)-methoxycarbonyltransferase, tRNA(Phe)
(7-(3-amino-3-carboxypropyl)wyosine(37)-O)-methyltransferase, LCMT2, KIAA0547, TYW4

Target/Specificity

This p21WAF1 antibody is generated from rabbits immunized with a KLH conjugated synthetic peptide between 435-463 amino acids from the Central region of human p21WAF1.

Dilution

WB~~1:1000

E~~Use at an assay dependent concentration.

Format

Purified polyclonal antibody supplied in PBS with 0.09% (W/V) sodium azide. This antibody is purified through a protein A column, followed by peptide affinity purification.

Storage

Maintain refrigerated at 2-8°C for up to 2 weeks. For long term storage store at -20°C in small aliquots to prevent freeze-thaw cycles.

Precautions

LCMT2 Antibody (Center H450) is for research use only and not for use in diagnostic or therapeutic procedures.

LCMT2 Antibody (Center H450) - Protein Information**Name** LCMT2

Synonyms KIAA0547, TYW4

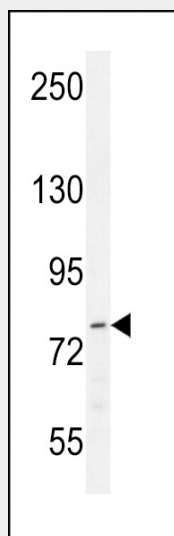
Function Probable S-adenosyl-L-methionine-dependent methyltransferase that acts as a component of the wybutosine biosynthesis pathway. Wybutosine is a hyper modified guanosine with a tricyclic base found at the 3'-position adjacent to the anticodon of eukaryotic phenylalanine tRNA (By similarity). May methylate the carboxyl group of leucine residues to form alpha-leucine ester residues.

LCMT2 Antibody (Center H450) - Protocols

Provided below are standard protocols that you may find useful for product applications.

- [Western Blot](#)
- [Blocking Peptides](#)
- [Dot Blot](#)
- [Immunohistochemistry](#)
- [Immunofluorescence](#)
- [Immunoprecipitation](#)
- [Flow Cytometry](#)
- [Cell Culture](#)

LCMT2 Antibody (Center H450) - Images



LCMT2 Antibody (Center H450) (Cat. #AP11778c) western blot analysis in WiDr cell line lysates (35ug/lane). This demonstrates the LCMT2 antibody detected the LCMT2 protein (arrow).

LCMT2 Antibody (Center H450) - Background

The protein encoded by this intronless gene belongs to the highly variable methyltransferase superfamily. This gene is the inferred homolog of the *Saccharomyces cerevisiae* carboxymethyltransferase gene PPM2 that is essential for the synthesis of the hypermodified guanosine Wybutosine (yW). [provided by RefSeq].

LCMT2 Antibody (Center H450) - References

Noma, A., et al. EMBO J. 25(10):2142-2154(2006)
De Baere, I., et al. Biochemistry 38(50):16539-16547(1999)