

**NUP107 Antibody (Center)**  
**Affinity Purified Rabbit Polyclonal Antibody (Pab)**  
**Catalog # AP11787c****Specification**

---

**NUP107 Antibody (Center) - Product Information**

Application	IHC-P, WB,E
Primary Accession	<a href="#">P57740</a>
Other Accession	<a href="#">NP_065134.1</a>
Reactivity	Mouse
Host	Rabbit
Clonality	Polyclonal
Isotype	Rabbit IgG
Calculated MW	106374
Antigen Region	398-425

**NUP107 Antibody (Center) - Additional Information****Gene ID** 57122**Other Names**

Nuclear pore complex protein Nup107, 107 kDa nucleoporin, Nucleoporin Nup107, NUP107

**Target/Specificity**

This NUP107 antibody is generated from rabbits immunized with a KLH conjugated synthetic peptide between 398-425 amino acids from the Central region of human NUP107.

**Dilution**

IHC-P~~1:50~100

WB~~1:1000

E~~Use at an assay dependent concentration.

**Format**

Purified polyclonal antibody supplied in PBS with 0.09% (W/V) sodium azide. This antibody is purified through a protein A column, followed by peptide affinity purification.

**Storage**

Maintain refrigerated at 2-8°C for up to 2 weeks. For long term storage store at -20°C in small aliquots to prevent freeze-thaw cycles.

**Precautions**

NUP107 Antibody (Center) is for research use only and not for use in diagnostic or therapeutic procedures.

**NUP107 Antibody (Center) - Protein Information****Name** NUP107

**Function** Plays a role in the nuclear pore complex (NPC) assembly and/or maintenance (PubMed:[12552102](#), PubMed:[15229283](#), PubMed:[30179222](#)). Required for the assembly of peripheral proteins into the NPC (PubMed:[12552102](#), PubMed:[15229283](#)). May anchor NUP62 to the NPC (PubMed:[15229283](#)). Involved in nephrogenesis (PubMed:[30179222](#)).

#### Cellular Location

Nucleus membrane. Nucleus, nuclear pore complex. Chromosome, centromere, kinetochore.

Note=Located on both the cytoplasmic and nuclear sides of the NPC core structure (PubMed:11564755). During mitosis, localizes to the kinetochores (PubMed:11564755). Dissociates from the disassembled NPC structure late during prophase of mitosis (PubMed:11564755)

#### Tissue Location

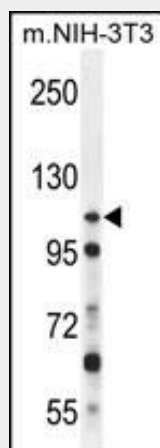
Ubiquitously expressed in fetal and adult tissues.

### NUP107 Antibody (Center) - Protocols

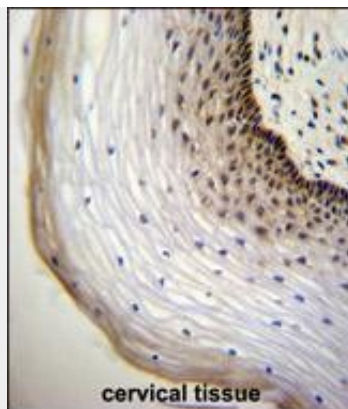
Provided below are standard protocols that you may find useful for product applications.

- [Western Blot](#)
- [Blocking Peptides](#)
- [Dot Blot](#)
- [Immunohistochemistry](#)
- [Immunofluorescence](#)
- [Immunoprecipitation](#)
- [Flow Cytometry](#)
- [Cell Culture](#)

### NUP107 Antibody (Center) - Images



NUP107 Antibody (Center) (Cat. #AP11787c) western blot analysis in mouse NIH-3T3 cell line lysates (35ug/lane). This demonstrates the NUP107 antibody detected the NUP107 protein (arrow).



NUP107 Antibody (Center) (Cat. #AP11787c) immunohistochemistry analysis in formalin fixed and paraffin embedded human cervical tissue followed by peroxidase conjugation of the secondary antibody and DAB staining. This data demonstrates the use of NUP107 Antibody (Center) for immunohistochemistry. Clinical relevance has not been evaluated.

#### **NUP107 Antibody (Center) - Background**

This gene encodes a member of the nucleoporin family. The protein is localized to the nuclear rim and is an essential component of the nuclear pore complex (NPC). All molecules entering or leaving the nucleus either diffuse through or are actively transported by the NPC. Alternate transcriptional splice variants of this gene have been observed but have not been thoroughly characterized.

#### **NUP107 Antibody (Center) - References**

Kim, S.Y., et al. Biochem. Biophys. Res. Commun. 401(1):131-136(2010)  
Kamatani, Y., et al. Nat. Genet. 42(3):210-215(2010)  
Mishra, R.K., et al. Nat. Cell Biol. 12(2):164-169(2010)  
Platani, M., et al. Mol. Biol. Cell 20(24):5260-5275(2009)  
Whittle, J.R., et al. J. Biol. Chem. 284(41):28442-28452(2009)