

**SHISA3 Antibody (C-term)**  
**Affinity Purified Rabbit Polyclonal Antibody (Pab)**  
**Catalog # AP11797b****Specification**

---

**SHISA3 Antibody (C-term) - Product Information**

Application	WB, IHC-P,E
Primary Accession	<a href="#">A0PJX4</a>
Other Accession	<a href="#">NP_001073974.1</a>
Reactivity	Mouse
Host	Rabbit
Clonality	Polyclonal
Isotype	Rabbit IgG
Calculated MW	25832
Antigen Region	158-186

**SHISA3 Antibody (C-term) - Additional Information****Gene ID** 152573**Other Names**

Protein shisa-3 homolog, SHISA3

**Target/Specificity**

This SHISA3 antibody is generated from rabbits immunized with a KLH conjugated synthetic peptide between 158-186 amino acids from the C-terminal region of human SHISA3.

**Dilution**

WB~~1:1000

IHC-P~~1:50~100

E~~Use at an assay dependent concentration.

**Format**

Purified polyclonal antibody supplied in PBS with 0.09% (W/V) sodium azide. This antibody is purified through a protein A column, followed by peptide affinity purification.

**Storage**

Maintain refrigerated at 2-8°C for up to 2 weeks. For long term storage store at -20°C in small aliquots to prevent freeze-thaw cycles.

**Precautions**

SHISA3 Antibody (C-term) is for research use only and not for use in diagnostic or therapeutic procedures.

**SHISA3 Antibody (C-term) - Protein Information****Name** SHISA3

**Function** Plays an essential role in the maturation of presomitic mesoderm cells by individual attenuation of both FGF and WNT signaling.

**Cellular Location**

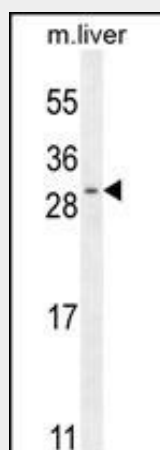
Endoplasmic reticulum membrane {ECO:0000250, ECO:0000250|UniProtKB:Q7T0Z7}; Single-pass type I membrane protein {ECO:0000250|UniProtKB:Q7T0Z7}

**SHISA3 Antibody (C-term) - Protocols**

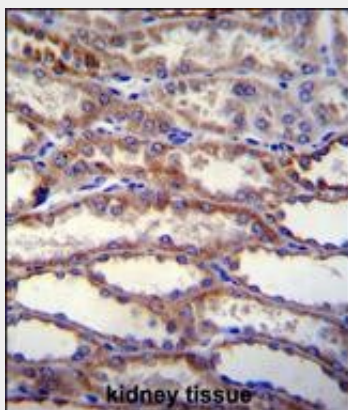
Provided below are standard protocols that you may find useful for product applications.

- [Western Blot](#)
- [Blocking Peptides](#)
- [Dot Blot](#)
- [Immunohistochemistry](#)
- [Immunofluorescence](#)
- [Immunoprecipitation](#)
- [Flow Cytometry](#)
- [Cell Culture](#)

**SHISA3 Antibody (C-term) - Images**



SHISA3 Antibody (C-term) (Cat. #AP11797b) western blot analysis in mouse liver tissue lysates (35ug/lane). This demonstrates the SHISA3 antibody detected the SHISA3 protein (arrow).



SHISA3 Antibody (C-term) (Cat. #AP11797b) immunohistochemistry analysis in formalin fixed and

paraffin embedded human kidney tissue followed by peroxidase conjugation of the secondary antibody and DAB staining. This data demonstrates the use of SHISA3 Antibody (C-term) for immunohistochemistry. Clinical relevance has not been evaluated.

**SHISA3 Antibody (C-term) - Background**

SHISA3 plays an essential role in the maturation of presomitic mesoderm cells by individual attenuation of both FGF and WNT signaling (By similarity).

**SHISA3 Antibody (C-term) - References**

Furushima, K., et al. Dev. Biol. 306(2):480-492(2007)