

**ODF3 Antibody (C-term)**  
**Affinity Purified Rabbit Polyclonal Antibody (Pab)**  
**Catalog # AP11800b****Specification**

---

**ODF3 Antibody (C-term) - Product Information**

Application	WB, IHC-P,E
Primary Accession	<a href="#">O96PU9</a>
Other Accession	<a href="#">NP_444510.2</a>
Reactivity	Mouse
Host	Rabbit
Clonality	Polyclonal
Isotype	Rabbit IgG
Calculated MW	27710
Antigen Region	170-199

**ODF3 Antibody (C-term) - Additional Information****Gene ID** 113746**Other Names**

Outer dense fiber protein 3, Outer dense fiber of sperm tails protein 3, Sperm tail protein SHIPPO 1, Transcript induced in spermiogenesis protein 50, ODF3, SHIPPO1, TISP50

**Target/Specificity**

This ODF3 antibody is generated from rabbits immunized with a KLH conjugated synthetic peptide between 170-199 amino acids from the C-terminal region of human ODF3.

**Dilution**

WB~~1:1000  
IHC-P~~1:50~100

**Format**

Purified polyclonal antibody supplied in PBS with 0.09% (W/V) sodium azide. This antibody is purified through a protein A column, followed by peptide affinity purification.

**Storage**

Maintain refrigerated at 2-8°C for up to 2 weeks. For long term storage store at -20°C in small aliquots to prevent freeze-thaw cycles.

**Precautions**

ODF3 Antibody (C-term) is for research use only and not for use in diagnostic or therapeutic procedures.

**ODF3 Antibody (C-term) - Protein Information****Name** CIMAP1A ([HGNC:19905](#))

**Function** Outer dense fibers are filamentous structures located on the outside of the axoneme in the midpiece and principal piece of the mammalian sperm tail. May help to maintain the passive elastic structures and elastic recoil of the sperm tail.

**Cellular Location**

Cytoplasm {ECO:0000250|UniProtKB:Q920N1}. Cell projection, cilium, flagellum  
{ECO:0000250|UniProtKB:Q920N1} Note=Expressed in the cytoplasmic lobe of spermatids  
{ECO:0000250|UniProtKB:Q920N1}

**Tissue Location**

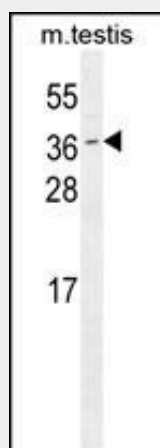
Testis-specific. {ECO:0000269|PubMed:11870087, ECO:0000269|Ref.2}

**ODF3 Antibody (C-term) - Protocols**

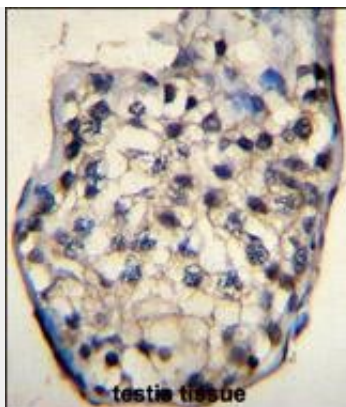
Provided below are standard protocols that you may find useful for product applications.

- [Western Blot](#)
- [Blocking Peptides](#)
- [Dot Blot](#)
- [Immunohistochemistry](#)
- [Immunofluorescence](#)
- [Immunoprecipitation](#)
- [Flow Cytometry](#)
- [Cell Culture](#)

**ODF3 Antibody (C-term) - Images**



ODF3 Antibody (C-term) (Cat. #AP11800b) western blot analysis in mouse testis tissue lysates (35ug/lane). This demonstrates the ODF3 antibody detected the ODF3 protein (arrow).



ODF3 Antibody (C-term) (Cat. #AP11800b) immunohistochemistry analysis in formalin fixed and paraffin embedded human testis tissue followed by peroxidase conjugation of the secondary antibody and DAB staining. This data demonstrates the use of ODF3 Antibody (C-term) for immunohistochemistry. Clinical relevance has not been evaluated.

#### **ODF3 Antibody (C-term) - Background**

ODF3 is a component of sperm flagella outer dense fibers, which add stiffness, elastic recoil, and protection against shearing forces during sperm movement.

#### **ODF3 Antibody (C-term) - References**

Soranzo, N., et al. Nat. Genet. 41(11):1182-1190(2009)  
Egydio de Carvalho, C., et al. Biol. Reprod. 66(3):785-795(2002)