

**ARL5C Antibody (N-term)**  
**Affinity Purified Rabbit Polyclonal Antibody (Pab)**  
**Catalog # AP11803a****Specification**

---

**ARL5C Antibody (N-term) - Product Information**

Application	WB,E
Primary Accession	<a href="#">A6NH57</a>
Other Accession	<a href="#">NP_001137440.1</a>
Reactivity	Mouse
Host	Rabbit
Clonality	Polyclonal
Isotype	Rabbit IgG
Calculated MW	20591
Antigen Region	34-61

**ARL5C Antibody (N-term) - Additional Information****Gene ID** 390790**Other Names**

Putative ADP-ribosylation factor-like protein 5C, ADP-ribosylation factor-like protein 12, ARL5C, ARL12

**Target/Specificity**

This ARL5C antibody is generated from rabbits immunized with a KLH conjugated synthetic peptide between 34-61 amino acids from the N-terminal region of human ARL5C.

**Dilution**

WB~~1:1000

E~~Use at an assay dependent concentration.

**Format**

Purified polyclonal antibody supplied in PBS with 0.09% (W/V) sodium azide. This antibody is purified through a protein A column, followed by peptide affinity purification.

**Storage**

Maintain refrigerated at 2-8°C for up to 2 weeks. For long term storage store at -20°C in small aliquots to prevent freeze-thaw cycles.

**Precautions**

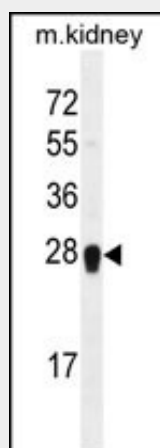
ARL5C Antibody (N-term) is for research use only and not for use in diagnostic or therapeutic procedures.

**ARL5C Antibody (N-term) - Protein Information****Name** ARL5C

**Synonyms** ARL12**Function** Binds and exchanges GTP and GDP.**ARL5C Antibody (N-term) - Protocols**

Provided below are standard protocols that you may find useful for product applications.

- [Western Blot](#)
- [Blocking Peptides](#)
- [Dot Blot](#)
- [Immunohistochemistry](#)
- [Immunofluorescence](#)
- [Immunoprecipitation](#)
- [Flow Cytometry](#)
- [Cell Culture](#)

**ARL5C Antibody (N-term) - Images**

ARL5C Antibody (N-term) (Cat. #AP11803a) western blot analysis in mouse kidney tissue lysates (35ug/lane). This demonstrates the ARL5C antibody detected the ARL5C protein (arrow).

**ARL5C Antibody (N-term) - Background**

ARL5C binds and exchanges GTP and GDP (By similarity).

**ARL5C Antibody (N-term) - References**

Zody, M.C., et al. Nature 440(7087):1045-1049(2006)  
Venter, J.C., et al. Science 291(5507):1304-1351(2001)