

VSIG8 Antibody (C-term)
Affinity Purified Rabbit Polyclonal Antibody (Pab)
Catalog # AP11808b**Specification**

VSIG8 Antibody (C-term) - Product Information

Application	WB, IHC-P, IHC-P-Leica,E
Primary Accession	Q5VU13
Other Accession	Q6P3A4 , NP_001013683.1 , NP_001127705.1
Reactivity	Human, Mouse
Host	Rabbit
Clonality	Polyclonal
Isotype	Rabbit IgG
Antigen Region	331-360

VSIG8 Antibody (C-term) - Additional Information**Other Names**

V-set and immunoglobulin domain-containing protein 8, VSIG8, C1orf204

Target/Specificity

This VSIG8 antibody is generated from rabbits immunized with a KLH conjugated synthetic peptide between 331-360 amino acids from the C-terminal region of human VSIG8.

Dilution

WB~~1:2000
IHC-P~~N/A
IHC-P-Leica~~1:100
E~~Use at an assay dependent concentration.

Format

Purified polyclonal antibody supplied in PBS with 0.09% (W/V) sodium azide. This antibody is purified through a protein A column, followed by peptide affinity purification.

Storage

Maintain refrigerated at 2-8°C for up to 2 weeks. For long term storage store at -20°C in small aliquots to prevent freeze-thaw cycles.

Precautions

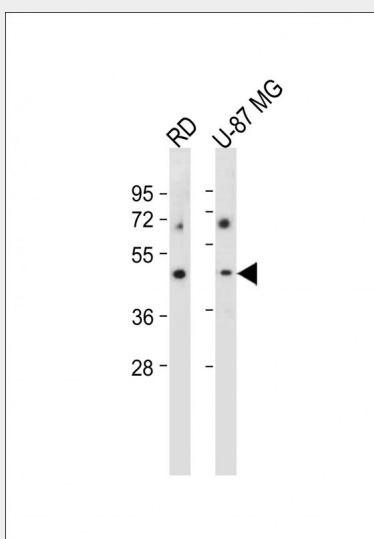
VSIG8 Antibody (C-term) is for research use only and not for use in diagnostic or therapeutic procedures.

VSIG8 Antibody (C-term) - Protein Information**VSIG8 Antibody (C-term) - Protocols**

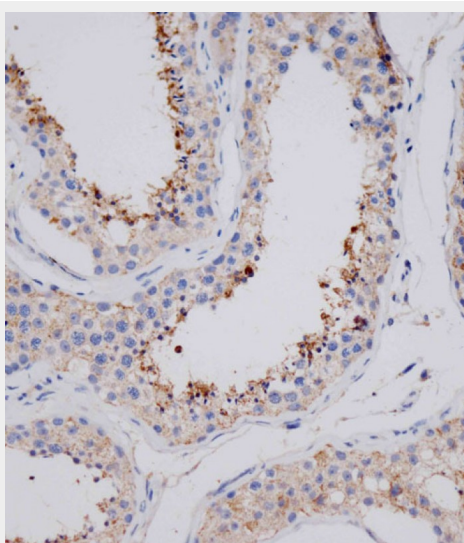
Provided below are standard protocols that you may find useful for product applications.

- [Western Blot](#)
- [Blocking Peptides](#)
- [Dot Blot](#)
- [Immunohistochemistry](#)
- [Immunofluorescence](#)
- [Immunoprecipitation](#)
- [Flow Cytometry](#)
- [Cell Culture](#)

VSIG8 Antibody (C-term) - Images



All lanes : Anti-VSIG8 Antibody (C-term) at 1:2000 dilution Lane 1: RD whole cell lysate Lane 2: U-87 MG whole cell lysate Lysates/proteins at 20 µg per lane. Secondary Goat Anti-Rabbit IgG, (H+L), Peroxidase conjugated at 1/10000 dilution. Predicted band size : 44 kDa Blocking/Dilution buffer: 5% NFDM/TBST.



Immunohistochemical analysis of AP11808b on paraffin-embedded human testis tissue was performed on the Leica® BOND RXm. Tissue was fixed with formaldehyde at room temperature. Heat induced epitope retrieval was performed by EDTA buffer (pH9. 0). Samples were incubated

with primary antibody(1:100) for 15min at room temperature. Leica Bond Polymer Refine Detection was used as the secondary antibody.

VSIG8 Antibody (C-term) - Background

VSIG8 contains 2 Ig-like V-type (immunoglobulin-like) domains. VSIG8 is single-pass type I membrane protein. The function of the VSIG8 protein remains unknown.

VSIG8 Antibody (C-term) - References

Strausberg, R.L., et al. Proc. Natl. Acad. Sci. U.S.A. 99(26):16899-16903(2002)