

MYBPHL Antibody (N-term)
Affinity Purified Rabbit Polyclonal Antibody (Pab)
Catalog # AP11820A**Specification**

MYBPHL Antibody (N-term) - Product Information

Application	FC, IF, IHC-P, WB,E
Primary Accession	A2RUH7
Other Accession	NP_001010985.2
Reactivity	Human
Host	Rabbit
Clonality	Polyclonal
Isotype	Rabbit IgG
Calculated MW	38733
Antigen Region	80-108

MYBPHL Antibody (N-term) - Additional Information**Gene ID** 343263**Other Names**

Myosin-binding protein H-like, MYBPHL

Target/Specificity

This MYBPHL antibody is generated from rabbits immunized with a KLH conjugated synthetic peptide between 80-108 amino acids from the N-terminal region of human MYBPHL.

Dilution

FC~~1:10~50

IF~~1:10~50

IHC-P~~1:10~50

WB~~1:1000

E~~Use at an assay dependent concentration.

Format

Purified polyclonal antibody supplied in PBS with 0.09% (W/V) sodium azide. This antibody is purified through a protein A column, followed by peptide affinity purification.

Storage

Maintain refrigerated at 2-8°C for up to 2 weeks. For long term storage store at -20°C in small aliquots to prevent freeze-thaw cycles.

Precautions

MYBPHL Antibody (N-term) is for research use only and not for use in diagnostic or therapeutic procedures.

MYBPHL Antibody (N-term) - Protein Information

Name MYBPHL ([HGNC:30434](#))

Function Myosin-binding protein which plays a role in cardiac function (PubMed:[28778945](#)). Seems to regulate conduction in the atria and ventricular conduction systems (PubMed:[28778945](#)).

Cellular Location

Cytoplasm, myofibril, sarcomere

Tissue Location

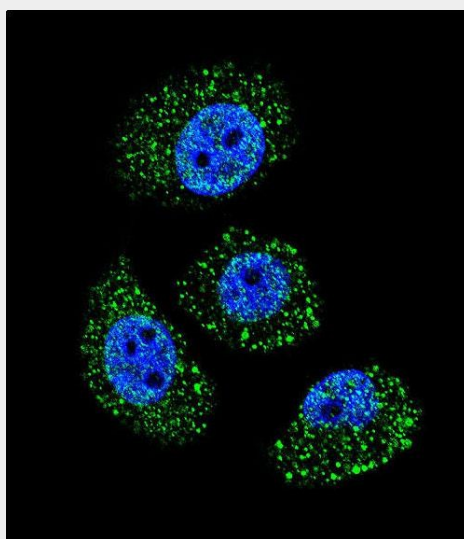
Expressed in heart, with higher expression in the atria. [Isoform 2]: Expressed specifically en the left atrium.

MYBPHL Antibody (N-term) - Protocols

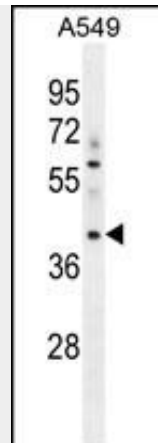
Provided below are standard protocols that you may find useful for product applications.

- [Western Blot](#)
- [Blocking Peptides](#)
- [Dot Blot](#)
- [Immunohistochemistry](#)
- [Immunofluorescence](#)
- [Immunoprecipitation](#)
- [Flow Cytometry](#)
- [Cell Culture](#)

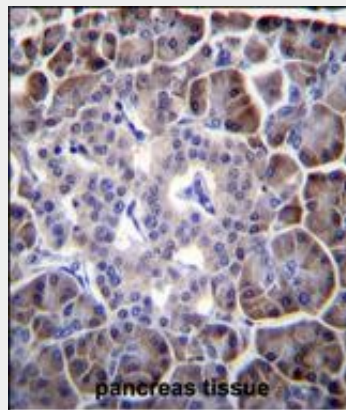
MYBPHL Antibody (N-term) - Images



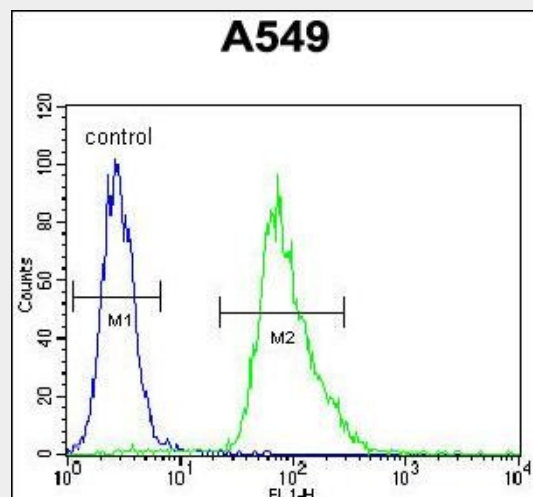
Confocal immunofluorescent analysis of MYBPHL Antibody (N-term)(Cat#AP11820a) with A549 cell followed by Alexa Fluor 488-conjugated goat anti-rabbit IgG (green). DAPI was used to stain the cell nuclear (blue).



MYBPHL Antibody (N-term) (Cat. #AP11820a) western blot analysis in A549 cell line lysates (35ug/lane). This demonstrates the MYBPHL antibody detected the MYBPHL protein (arrow).



MYBPHL Antibody (N-term) (Cat. #AP11820a) immunohistochemistry analysis in formalin fixed and paraffin embedded human pancreas tissue followed by peroxidase conjugation of the secondary antibody and DAB staining. This data demonstrates the use of MYBPHL Antibody (N-term) for immunohistochemistry. Clinical relevance has not been evaluated.



MYBPHL Antibody (N-term) (Cat. #AP11820a) flow cytometric analysis of A549 cells (right histogram) compared to a negative control cell (left histogram). FITC-conjugated goat-anti-rabbit secondary antibodies were used for the analysis.

MYBPHL Antibody (N-term) - References

Strausberg, R.L., et al. Proc. Natl. Acad. Sci. U.S.A. 99(26):16899-16903(2002)