

TNFAIP8L3 Antibody (Center)
Affinity Purified Rabbit Polyclonal Antibody (Pab)
Catalog # AP11822c**Specification**

TNFAIP8L3 Antibody (Center) - Product Information

Application	WB,E
Primary Accession	Q5GJ75
Other Accession	NP_997264.2
Reactivity	Human
Host	Rabbit
Clonality	Polyclonal
Isotype	Rabbit IgG
Calculated MW	32659
Antigen Region	136-164

TNFAIP8L3 Antibody (Center) - Additional Information**Gene ID** 388121**Other Names**

Tumor necrosis factor alpha-induced protein 8-like protein 3, TNF alpha-induced protein 8-like protein 3, TNFAIP8-like protein 3, TNFAIP8L3

Target/Specificity

This TNFAIP8L3 antibody is generated from rabbits immunized with a KLH conjugated synthetic peptide between 136-164 amino acids from the Central region of human TNFAIP8L3.

Dilution

WB~~1:1000

E~~Use at an assay dependent concentration.

Format

Purified polyclonal antibody supplied in PBS with 0.09% (W/V) sodium azide. This antibody is purified through a protein A column, followed by peptide affinity purification.

Storage

Maintain refrigerated at 2-8°C for up to 2 weeks. For long term storage store at -20°C in small aliquots to prevent freeze-thaw cycles.

Precautions

TNFAIP8L3 Antibody (Center) is for research use only and not for use in diagnostic or therapeutic procedures.

TNFAIP8L3 Antibody (Center) - Protein Information**Name** TNFAIP8L3

Synonyms TIPE3

Function Acts as a lipid transfer protein. Preferentially captures and shuttles two lipid second messengers, i.e., phosphatidylinositol 4,5- biphosphate and phosphatidylinositol 3,4,5-trisphosphate and increases their levels in the plasma membrane. Additionally, may also function as a lipid-presenting protein to enhance the activity of the PI3K-AKT and MEK-ERK pathways. May act as a regulator of tumorigenesis through its activation of phospholipid signaling.

Cellular Location

Cytoplasm. Cell membrane {ECO:0000250|UniProtKB:Q3TBL6}. Note=On PDGF activation, translocates from cytoplasm to plasma membrane {ECO:0000250|UniProtKB:Q3TBL6}

Tissue Location

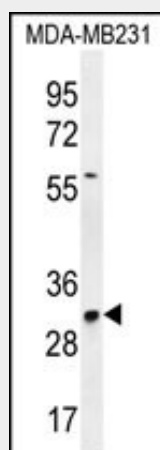
Widely expressed (at protein level) (PubMed:25479791). Highly expressed in most carcinoma cell lines (PubMed:25242044, PubMed:25479791).

TNFAIP8L3 Antibody (Center) - Protocols

Provided below are standard protocols that you may find useful for product applications.

- [Western Blot](#)
- [Blocking Peptides](#)
- [Dot Blot](#)
- [Immunohistochemistry](#)
- [Immunofluorescence](#)
- [Immunoprecipitation](#)
- [Flow Cytometry](#)
- [Cell Culture](#)

TNFAIP8L3 Antibody (Center) - Images



TNFAIP8L3 Antibody (Center) (Cat. #AP11822c) western blot analysis in MDA-MB231 cell line lysates (35ug/lane). This demonstrates the TNFAIP8L3 antibody detected the TNFAIP8L3 protein (arrow).

TNFAIP8L3 Antibody (Center) - References

Strausberg, R.L., et al. Proc. Natl. Acad. Sci. U.S.A. 99(26):16899-16903(2002)

TNFAIP8L3 Antibody (Center) - Citations

- [Expression of TIPE family members in human colorectal cancer](#)

