

PRR19 Antibody (Center)
Affinity Purified Rabbit Polyclonal Antibody (Pab)
Catalog # AP11830c

Specification

PRR19 Antibody (Center) - Product Information

Application	WB, FC,E
Primary Accession	A6NJB7
Other Accession	NP_954979.2
Reactivity	Human
Host	Rabbit
Clonality	Polyclonal
Isotype	Rabbit IgG
Calculated MW	38716
Antigen Region	208-236

PRR19 Antibody (Center) - Additional Information

Gene ID 284338

Other Names

Proline-rich protein 19, PRR19

Target/Specificity

This PRR19 antibody is generated from rabbits immunized with a KLH conjugated synthetic peptide between 208-236 amino acids from the Central region of human PRR19.

Dilution

WB~~1:1000

FC~~1:10~50

Format

Purified polyclonal antibody supplied in PBS with 0.09% (W/V) sodium azide. This antibody is purified through a protein A column, followed by peptide affinity purification.

Storage

Maintain refrigerated at 2-8°C for up to 2 weeks. For long term storage store at -20°C in small aliquots to prevent freeze-thaw cycles.

Precautions

PRR19 Antibody (Center) is for research use only and not for use in diagnostic or therapeutic procedures.

PRR19 Antibody (Center) - Protein Information

Name PRR19 ([HGNC:33728](#))

Function Promotes meiotic crossing over formation through its interaction with CNTD1 by

participating in the crossover differentiation step of crossover-specific recombination intermediates.

Cellular Location

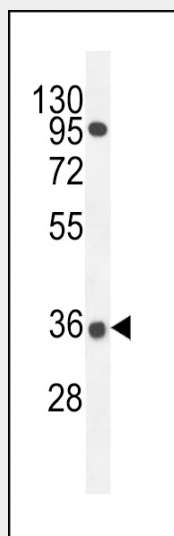
Nucleus {ECO:0000250|UniProtKB:B2RW88}. Chromosome {ECO:0000250|UniProtKB:B2RW88}.

Note=Co-localized at crossover sites with CNTD1. Localizes on synapsed chromosome only in mid/late pachytene spermatocytes. {ECO:0000250|UniProtKB:B2RW88}

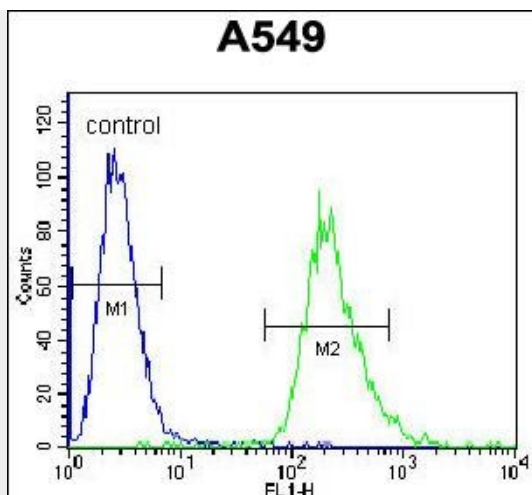
PRR19 Antibody (Center) - Protocols

Provided below are standard protocols that you may find useful for product applications.

- [Western Blot](#)
- [Blocking Peptides](#)
- [Dot Blot](#)
- [Immunohistochemistry](#)
- [Immunofluorescence](#)
- [Immunoprecipitation](#)
- [Flow Cytometry](#)
- [Cell Culture](#)

PRR19 Antibody (Center) - Images

PRR19 Antibody (Center) (Cat. #AP11830c) western blot analysis in A549 cell line lysates (35ug/lane). This demonstrates the PRR19 antibody detected the PRR19 protein (arrow).



PRR19 Antibody (Center) (Cat. #AP11830c) flow cytometric analysis of A549 cells (right histogram) compared to a negative control cell (left histogram). FITC-conjugated goat-anti-rabbit secondary antibodies were used for the analysis.

PRR19 Antibody (Center) - Background

The specific function of PRR19 remains unknown. There are 2 isoforms produced by alternative splicing.

PRR19 Antibody (Center) - References

Strausberg, R.L., et al. Proc. Natl. Acad. Sci. U.S.A. 99(26):16899-16903(2002)