

STARD6 Antibody (C-term)
Affinity Purified Rabbit Polyclonal Antibody (Pab)
Catalog # AP11832b**Specification**

STARD6 Antibody (C-term) - Product Information

Application	FC, WB,E
Primary Accession	P59095
Other Accession	NP_631910.1
Reactivity	Human
Host	Rabbit
Clonality	Polyclonal
Isotype	Rabbit IgG
Antigen Region	187-215

STARD6 Antibody (C-term) - Additional Information**Gene ID** 147323**Other Names**

StAR-related lipid transfer protein 6, START domain-containing protein 6, StARD6, STARD6

Target/Specificity

This STARD6 antibody is generated from rabbits immunized with a KLH conjugated synthetic peptide between 187-215 amino acids from the C-terminal region of human STARD6.

Dilution

FC~~1:10~50

WB~~1:1000

E~~Use at an assay dependent concentration.

Format

Purified polyclonal antibody supplied in PBS with 0.09% (W/V) sodium azide. This antibody is purified through a protein A column, followed by peptide affinity purification.

Storage

Maintain refrigerated at 2-8°C for up to 2 weeks. For long term storage store at -20°C in small aliquots to prevent freeze-thaw cycles.

Precautions

STARD6 Antibody (C-term) is for research use only and not for use in diagnostic or therapeutic procedures.

STARD6 Antibody (C-term) - Protein Information**Name** STARD6**Function** May be involved in the intracellular transport of sterols or other lipids. May bind

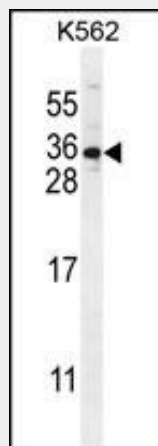
cholesterol or other sterols (By similarity).

STARD6 Antibody (C-term) - Protocols

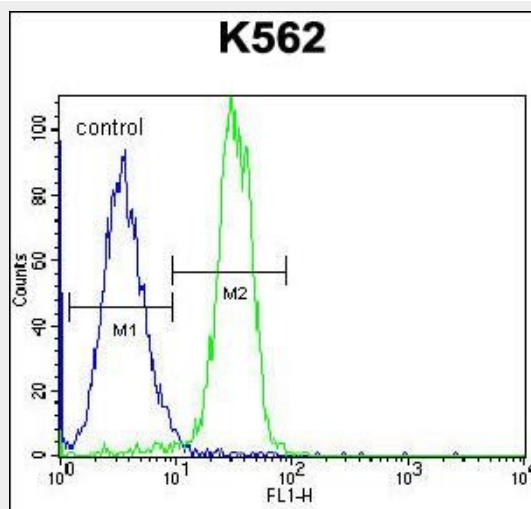
Provided below are standard protocols that you may find useful for product applications.

- [Western Blot](#)
- [Blocking Peptides](#)
- [Dot Blot](#)
- [Immunohistochemistry](#)
- [Immunofluorescence](#)
- [Immunoprecipitation](#)
- [Flow Cytometry](#)
- [Cell Culture](#)

STARD6 Antibody (C-term) - Images



STARD6 Antibody (C-term) (Cat. #AP11832b) western blot analysis in K562 cell line lysates (35ug/lane). This demonstrates the STARD6 antibody detected the STARD6 protein (arrow).



STARD6 Antibody (C-term) (Cat. #AP11832b) flow cytometric analysis of K562 cells (right histogram) compared to a negative control cell (left histogram). FITC-conjugated goat-anti-rabbit secondary antibodies were used for the analysis.

STARD6 Antibody (C-term) - Background

Cholesterol homeostasis is regulated, at least in part, by sterol regulatory element (SRE)-binding proteins (e.g., SREBP1; MIM 184756) and by liver X receptors (e.g., LXRA; MIM 602423). Upon sterol depletion, LXRs are inactive and SREBPs are cleaved, after which they bind promoter SREs and activate genes involved in cholesterol biosynthesis and uptake. Sterol transport is mediated by vesicles or by soluble protein carriers, such as steroidogenic acute regulatory protein (STAR; MIM 600617). STAR is homologous to a family of proteins containing a 200- to 210-amino acid STAR-related lipid transfer (START) domain, including STARD6 (Soccio et al., 2002 [PubMed 12011452]).

STARD6 Antibody (C-term) - References

Bailey, S.D., et al. Diabetes Care (2010) In press :
Talmud, P.J., et al. Am. J. Hum. Genet. 85(5):628-642(2009)
Soccio, R.E., et al. Proc. Natl. Acad. Sci. U.S.A. 99(10):6943-6948(2002)

STARD6 Antibody (C-term) - Citations

- [STARD6 is expressed in steroidogenic cells of the ovary and can enhance de novo steroidogenesis.](#)